




AUSTRALIAN GEOGRAPHY COMPETITION

2023 Year 7 - answers

Welcome to the 2023 Australian Geography Competition!

You have 30 minutes to complete 30 questions.

NOTE: Due to the size of some graphics, you may need to scroll down the page to see the complete graphic.



Some questions require the use of a ruler or calculator. To use, click on the icon at the top right of the screen. To turn off, click the icon again.

If you want to enlarge a graphic or text, click on the magnifying glass at the top left of the screen.

There is a timer count-down at the top left of the screen.

The flag button at the bottom right of the screen can be used as a reminder for a question you want to come back to. On the question overview page you can see which questions you flagged.

The tiles button in the top middle of the screen next to the question number takes you to the question overview.

The question overview shows a summary of questions not started, completed or flagged.

Progress summary


Show all 11 Answered 15 Not answered 20 Not next 5 Flagged

Questions


Click a number to go to that question


0 1 2 3 4 5 6 7 8 9

Supported by



Good luck!

Flag 

Next 

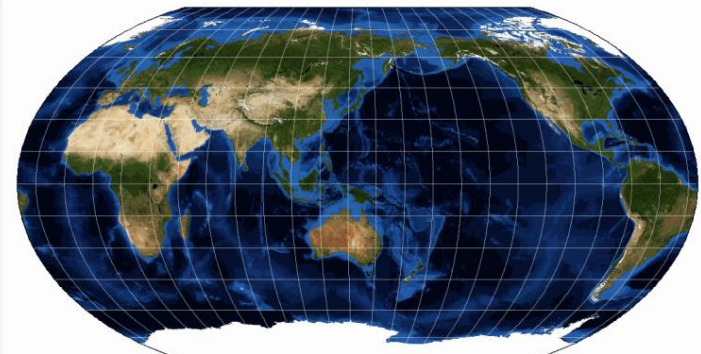


Question 1 of 30



Based on the map below, approximately how much of the Earth's surface is covered by water?

- 32% 49% 71% 94%



Physical map of the world

Source: ICSM, CY BY 4.0

Back

Flag

Next



Question 2 of 30



Which energy source drives the water cycle?

- sun
 wind
 water
 biomass

Back

Flag

Next

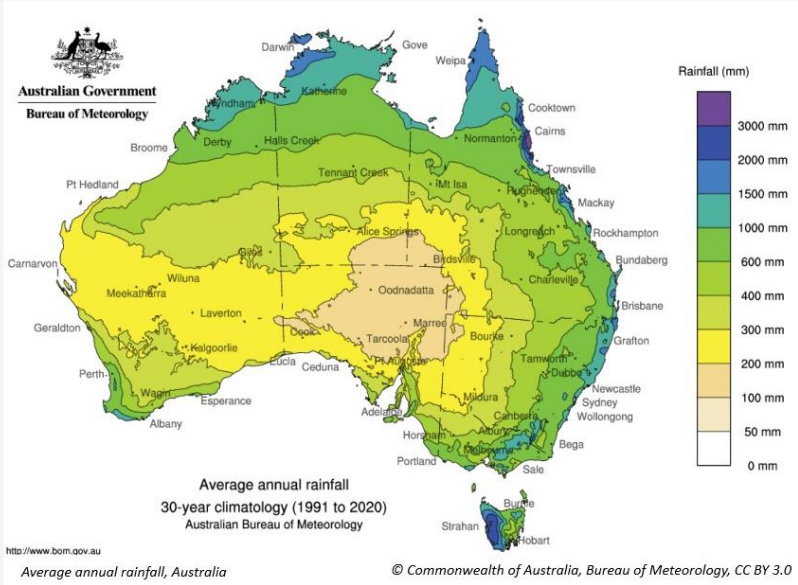


Question 3 of 30



Based on the map below, what is the average annual rainfall for Darwin, NT?

- 1246 mm
 1727 mm
 2681 mm
 3558 mm



Back

Flag

Next

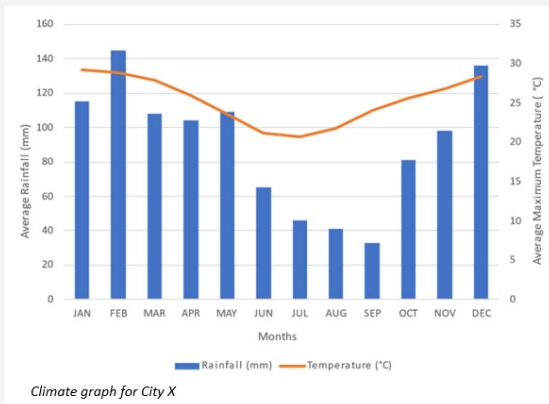


Question 4 of 30



Choose the drop-down word that correctly completes the sentence.

Based on the graph below, City X is in the hemisphere.



Back

Flag

Next



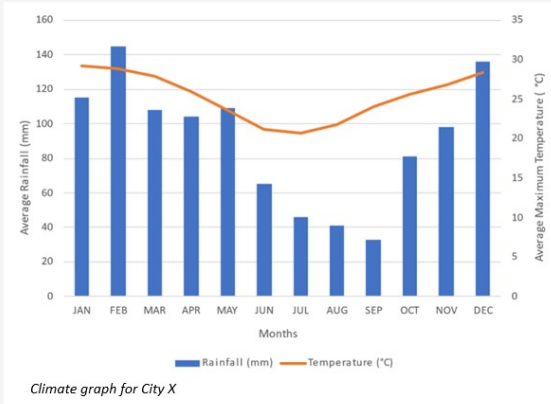
Question 5 of 30



Drag and drop the word that correctly completes the sentence.

summer autumn spring

Based on the graph below, City X's driest season is .



Climate graph for City X

Back

Flag

Next



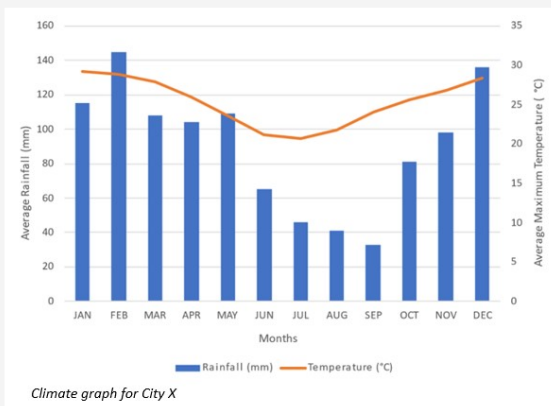
Question 6 of 30



Using the graph below, what is the average rainfall in October in City X?

Enter your answer as a whole number in the box.

mm ** 80, 81, 82,83 are accepted as correct answers



Climate graph for City X

Back

Flag

Next



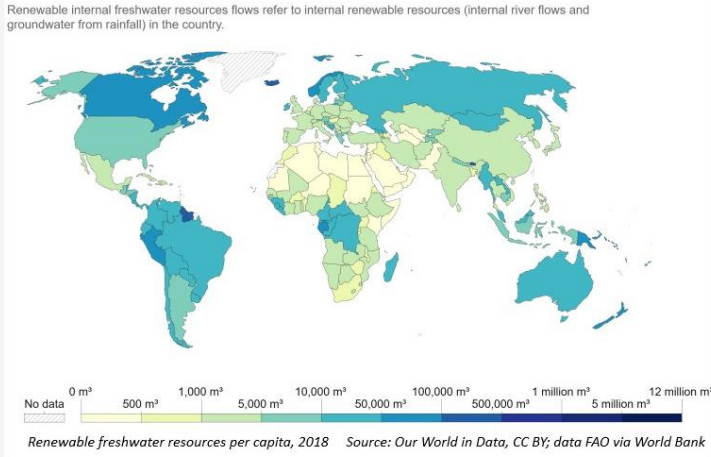
Question 7 of 30



Drag and drop the continent name that correctly completes the sentence.

Europe
North America
South America

Based on the map below, countries in **Africa** are most likely to suffer water insecurity.



Back

Flag

Next

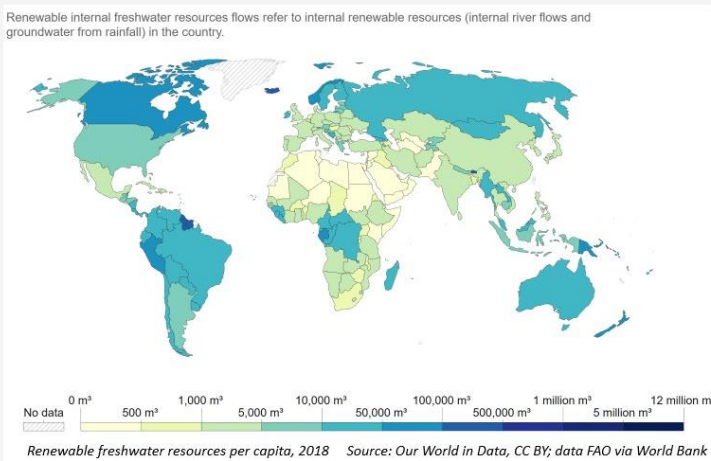


Question 8 of 30



Australia is classified in the medium range in the map below mainly because of its:

- low population
 high population
 low rainfall
 high rainfall



Back

Flag

Next



Question 9 of 30



Which TWO of these initiatives would be most likely to reduce the risk of water scarcity for residents?

- recycling water
- promoting water conservation measures
- privatising the water supply
- deregulating discharge from sewage treatment facilities

Back

Flag

Next

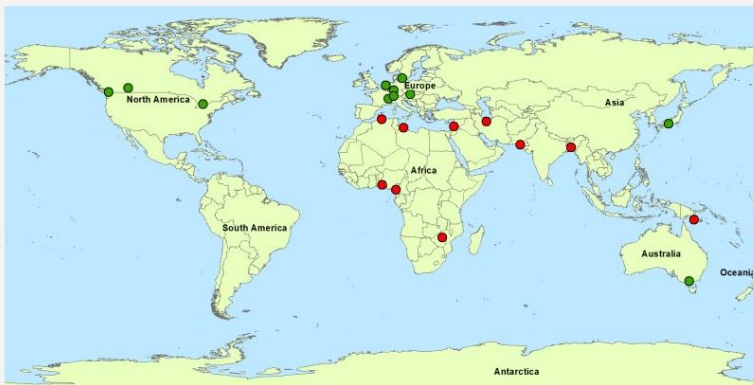


Question 10 of 30



Based on the map below, which of these statements is correct?

- The most liveable cities are in developed countries.
- The most liveable cities are in developing countries.
- The least liveable cities are in developed countries.
- Africa has a high concentration of cities.



Liveability Index Rank 2022
 ● Top 10 cities (rank 1 to 10)
 ● Bottom 10 cities (rank 163 to 172)

0 5000 10000
Kilometres



Global Liveability Index 2022: 10 most liveable and least liveable cities

Data source: Economist Intelligence Unit

Back

Flag

Next

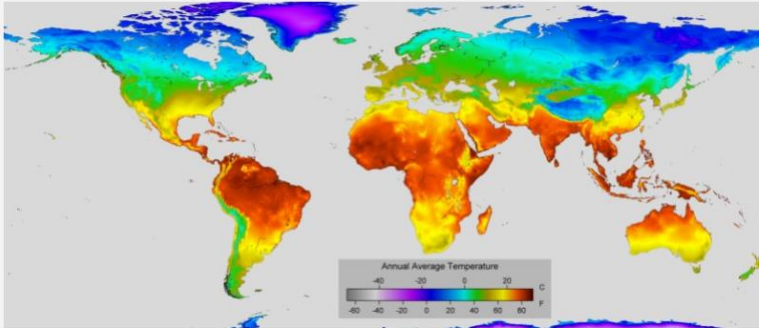


Question 11 of 30

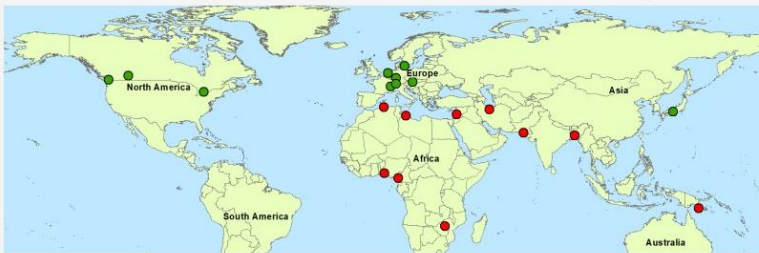


Which generalisation can be inferred from the TWO maps below?

- Temperature has a large impact on liveability.
- Temperature has little impact on liveability.
- High average temperatures result in high liveability.
- Very low temperatures result in high liveability.



Annual average temperature map © Berkeley Earth, CC BY 4.0



◀ Back

Flag

Next ▶



Question 12 of 30



Based on the photo below, which TWO of these factors could best be addressed to improve the liveability of Dharavi?

- climate
- infrastructure
- environmental quality
- tradition and spiritual connection
- feeling of connection to family and community



Dharavi, Mumbai, India © Erin, CC BY 2.0

◀ Back

Flag

Next ▶

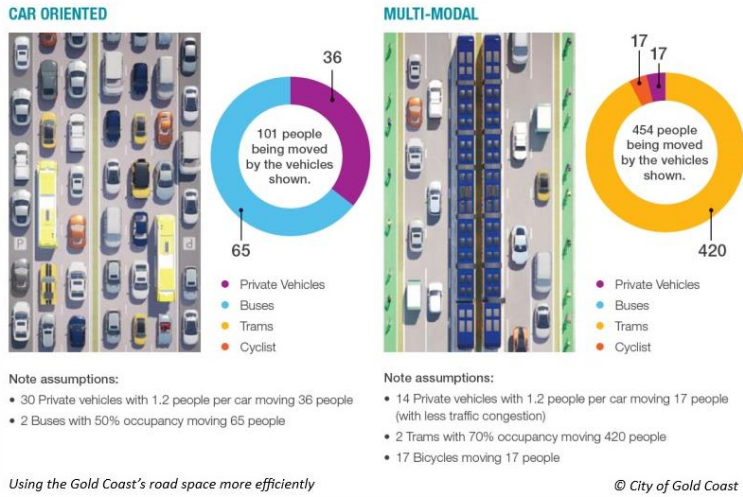


Question 13 of 30



Based on the image below, select THREE ways in which multi-modal transport can improve liveability.

- reduces traffic congestion
- reduces carbon emissions
- reduces destination choice
- improves social connections



Back

Flag

Next

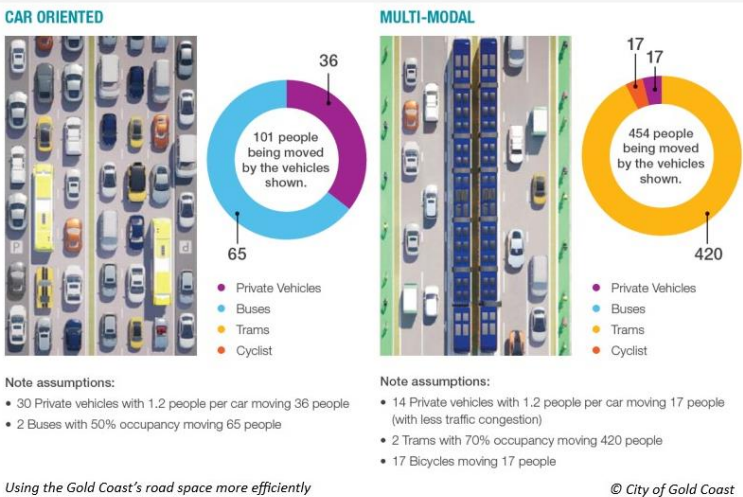


Question 14 of 30



Choose the drop-down text that correctly completes the sentence. You can estimate the number or use the calculator by clicking on the symbol in the top right corner.

Using the car-oriented information below, with average occupancies, a bus moves approximately as many people as a car.



Back

Flag

Next



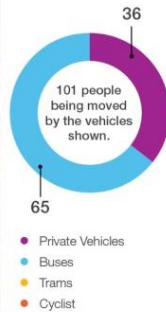
Question 15 of 30



What is the best explanation why buses are shown as having a lower occupancy rate than trams in the image below?

- Trams only travel on popular routes.
- More people can travel on trams.
- Trams emit fewer greenhouse gases.
- Buses are very noisy.

CAR ORIENTED

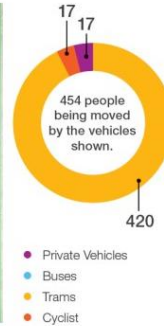


Note assumptions:

- 30 Private vehicles with 1.2 people per car moving 36 people
- 2 Buses with 50% occupancy moving 65 people

Using the Gold Coast's road space more efficiently

MULTI-MODAL



Note assumptions:

- 14 Private vehicles with 1.2 people per car moving 17 people (with less traffic congestion)
- 2 Trams with 70% occupancy moving 420 people
- 17 Bicycles moving 17 people

© City of Gold Coast

Back

Flag

Next



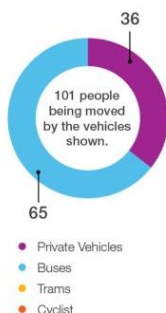
Question 16 of 30



Which of these would be a negative consequence of shifting to the multi-modal transport model shown in the image below?

- Lack of parking reduces trade in local businesses.
- Active transport methods are discouraged.
- Commuters spend less time travelling to work.
- Private car ownership becomes more expensive.

CAR ORIENTED

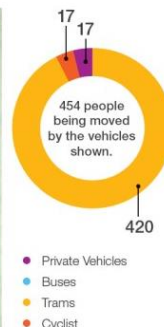


Note assumptions:

- 30 Private vehicles with 1.2 people per car moving 36 people
- 2 Buses with 50% occupancy moving 65 people

Using the Gold Coast's road space more efficiently

MULTI-MODAL



Note assumptions:

- 14 Private vehicles with 1.2 people per car moving 17 people (with less traffic congestion)
- 2 Trams with 70% occupancy moving 420 people
- 17 Bicycles moving 17 people

© City of Gold Coast

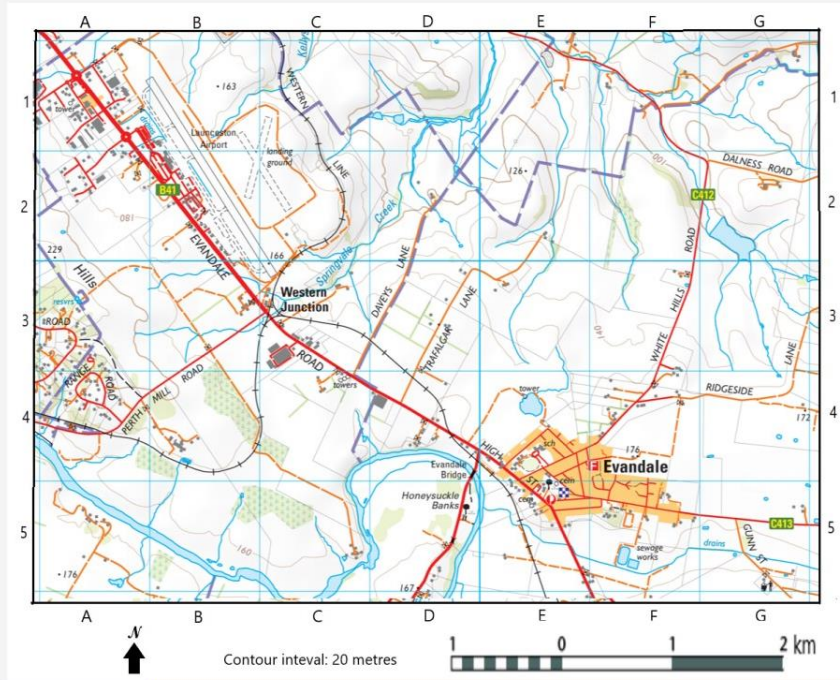
Back

Flag

Next

Choose the drop-down word that correctly completes the sentence.

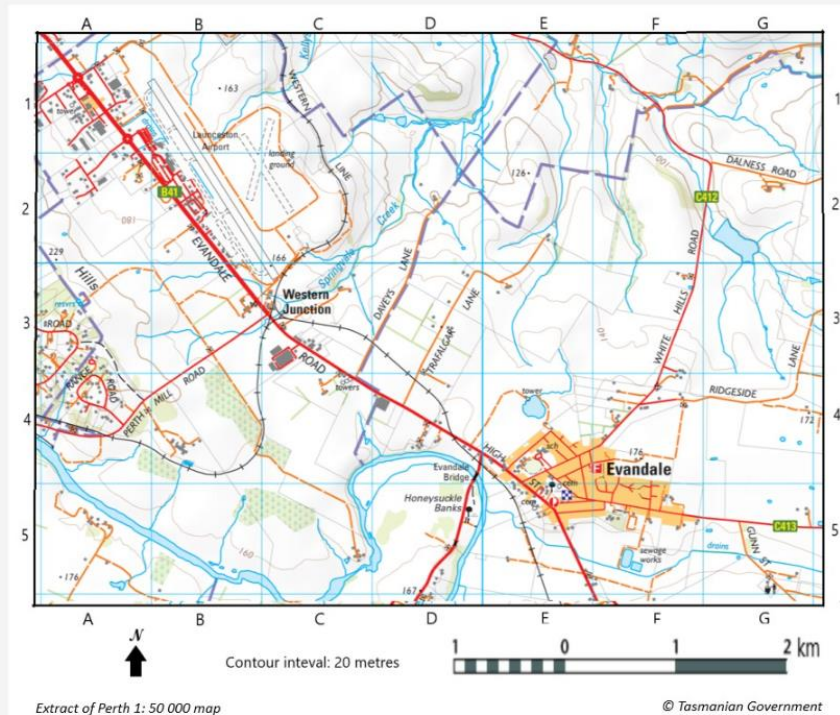
The map below is a map.



Remember to scroll down if you can't see all of the map.

The map below is an extract. Which element is missing that a complete map should have?

- legend
 orientation
 scale
 title

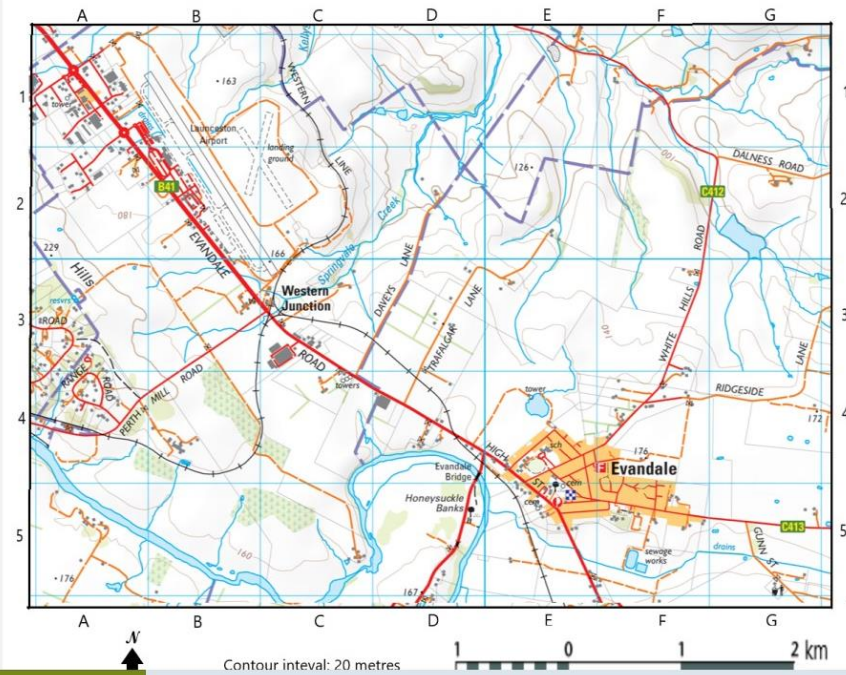




Question 19 of 30

Using the map, in approximately which direction would you be driving to go from Evandale to Western Junction?

- WNW
 SSE
 NNW
 ESE



Back

Flag

Next

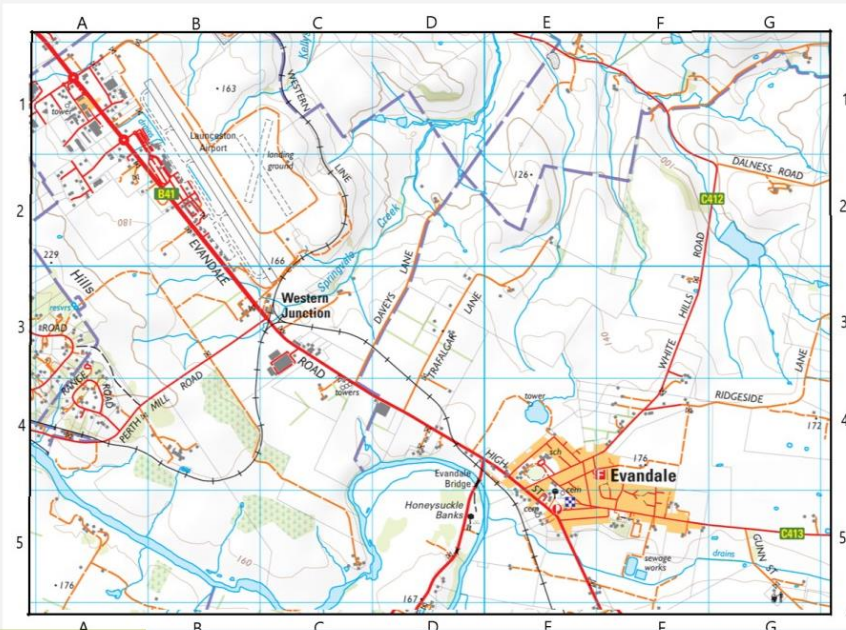


Question 20 of 30

Drag and drop the number that correctly completes the sentence. You may need to scroll down to see all the map.

-

The plantation shown in grid square C5 on the map is approximately metres above sea level.



Back

Flag

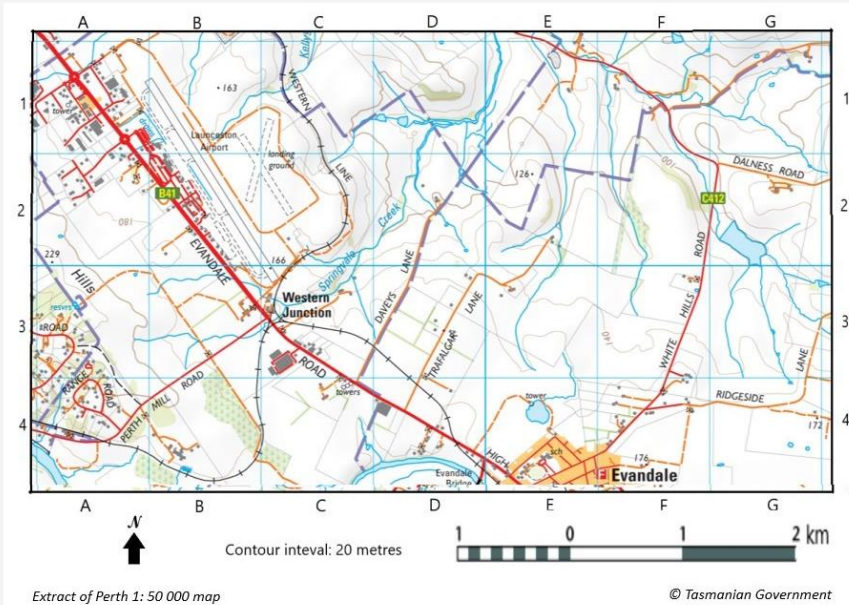
Next

Question 21 of 30

Drag and drop the number that correctly completes the sentence. You may use the on-screen ruler - click on the symbol in the top right corner, drag and rotate it.

- 1.2 3.2 4.3

Using the map below, the length of Launceston Airport's main runway (see B1 to C3) is approximately **2.1** km.

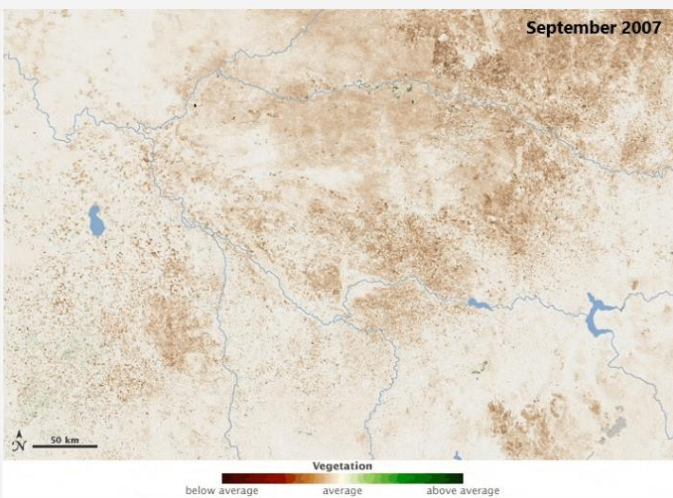


Back Flag Next

Question 22 of 30

Which factor best accounts for the 2006 difference in the vegetation pattern shown in the animation below?

- cropping
 deforestation
 drought
 seasonal change



Land bordering the Murray River, NSW/Vic

Images source: NASA Earth Observatory

Back Flag Next

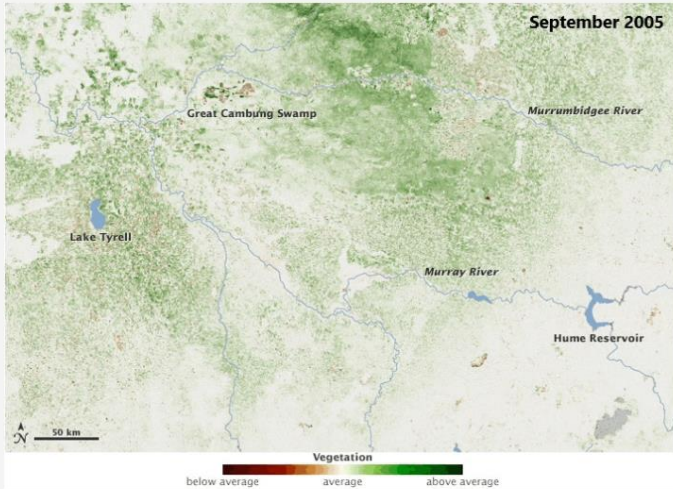


Question 23 of 30



Which geographic concept does the animation best illustrate?

- space
 interconnection
 change
 scale



Land bordering the Murray River, NSW/Vic

Images source: NASA Earth Observatory

Back

Flag

Next

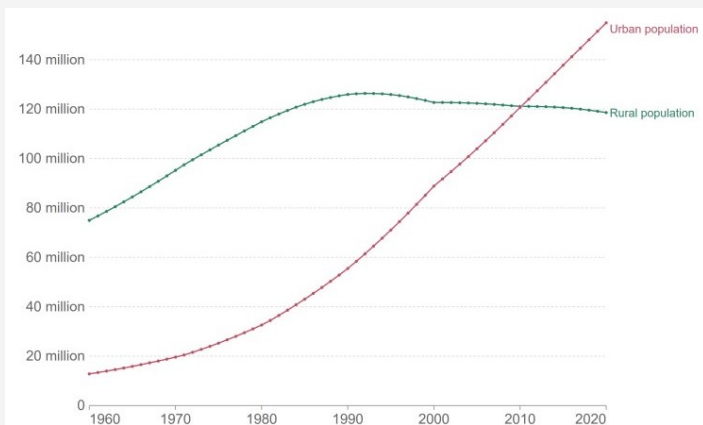


Question 24 of 30



Using the graph below, describe the rate of urban population growth in Indonesia since 1980.

- slowly increasing
 slowly decreasing
 rapidly increasing
 rapidly decreasing



Number of people living in urban and rural areas, Indonesia

Source: Our World in Data, CC BY; data UN Population Division via World Bank

Back

Flag

Next

Question 25 of 30

Classify the statements as either a reason for or result of the growth of Jakarta, Indonesia. Click on the box in the correct column.


Statement	Reason	Result
Traffic congestion in Jakarta creates long commutes for residents.	<input type="checkbox"/>	<input checked="" type="checkbox"/>
Jakarta is the centre of government.	<input checked="" type="checkbox"/>	<input type="checkbox"/>
Increased drilling for home wells to access groundwater is causing subsidence.	<input type="checkbox"/>	<input checked="" type="checkbox"/>
Air pollution is routinely higher than WHO air quality guidelines.	<input type="checkbox"/>	<input checked="" type="checkbox"/>
Traditional farming practices do not provide enough income for families.	<input checked="" type="checkbox"/>	<input type="checkbox"/>

Back
Flag
Next

Question 26 of 30

Based on the animation below, which type of flooding occurred in this area of the Kimberley in January 2023?

riverine
 flash
 coastal
 overland



Flooding in the Kimberley, WA *Images source: NASA Earth Observatory*

Back
Flag
Next

Question 27 of 30

The Fitzroy River is included in the West Kimberley National Heritage Listing. Choose the drop-down word that correctly classifies its values as aesthetic, cultural, economic or environmental.

Fitzroy River Values	Classification
The Fitzroy River is a rich source of food for both Indigenous and non-Indigenous people.	Economic ▼
The threatened purple-crowned fairy wren is restricted to the forests fringing the Fitzroy.	Environmental ▼
Four different expressions of the Rainbow Serpent traditions are found within the Fitzroy's catchment.	Cultural ▼
The towering white and grey walls of Geikie Gorge are breathtaking.	Aesthetic ▼

◀ Back
Flag
Next ▶

Question 28 of 30

State/Territory	Industry	Households
	in gigalitres	
Australian Capital Territory	61.51	32.01
New South Wales	16,675.53	543.87
Northern Territory	202.46	5.49
Queensland	6,816.09	362.25
South Australia	1,499.17	141.27
Tasmania	33,561.69	34.1
Victoria	10,357.4	420.85
Western Australia	3,443.86	247.69

Consumption of water by industry and households in 2020/21
Data source: ABS

Based on the table, drag the states and territories into the correct order from highest to lowest household water consumption.

New South Wales

Victoria

Queensland

Western Australia

South Australia

Tasmania

Australian Capital Territory

Northern Territory

◀ Back
Flag
Next ▶

Question 29 of 30

State/Territory	Industry	Households
	in gigalitres	
Australian Capital Territory	61.51	32.01
New South Wales	16,675.53	543.87
Northern Territory	202.46	5.49
Queensland	6,816.09	362.25
South Australia	1,499.17	141.27
Tasmania	33,561.69	34.1
Victoria	10,357.4	420.85
Western Australia	3,443.86	247.69

*Consumption of water by industry and households in 2020/21
Data source: ABS*

A state's or territory's water consumption by households is directly related to its:

- population
- area
- total water consumption
- annual rainfall

Back
Flag
Next

Question 30 of 30

State/Territory	Industry	Households
	in gigalitres	
Australian Capital Territory	61.51	32.01
New South Wales	16,675.53	543.87
Northern Territory	202.46	5.49
Queensland	6,816.09	362.25
South Australia	1,499.17	141.27
Tasmania	33,561.69	34.1
Victoria	10,357.4	420.85
Western Australia	3,443.86	247.69

*Consumption of water by industry and households in 2020/21
Data source: ABS*

Tasmania's high level of industrial water use is mainly due to which industry?

- electricity generation
- manufacturing
- aquaculture
- forestry

Back
Flag
Next