



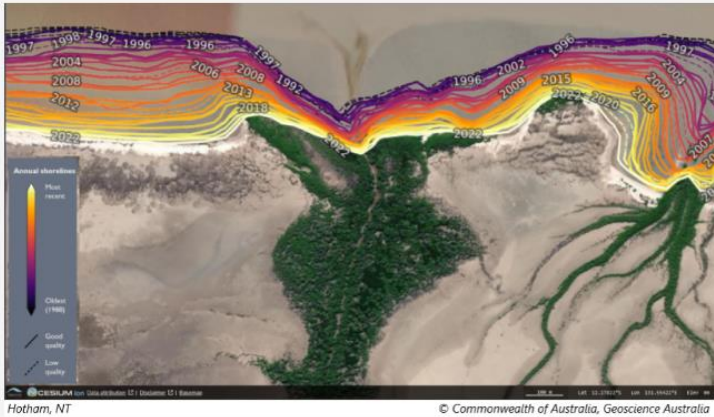
AUSTRALIAN GEOGRAPHY COMPETITION

2024 Year 10 - answers

The screenshot displays the competition's user interface. At the top, there is a navigation bar with a magnifying glass icon on the left and the word "Instructions" in the center. Below this, a welcome message states: "Welcome to the 2024 Australian Geography Competition! You have 30 minutes to complete 40 questions." A note follows: "NOTE: Due to the size of some graphics, you may need to scroll down the page to see the complete graphic." On the right side, the competition logo is visible. The main content area contains several examples of question tiles, each with a timer (60:29), a question number (e.g., "Question 1 of 40"), and a flag icon. A "Progress summary" section at the bottom left shows a grid of question numbers (0-9) with status indicators for "Answered", "Not answered", "Not read", and "Flagged". At the bottom right, there are "Flag" and "Next" buttons. The footer includes the text "Supported by" followed by logos for the Australian Government Department of Education, The University of Melbourne, UNSW Sydney, Australian Institute for Disaster Resilience, and Flinders University. A "Good luck!" message is located at the bottom left of the page.

*note: on a question where this is more than one drop down to be answered, and only one list is visible, all answer options are the same for each of the drop downs

Question 1 of 40



Drag the term into the sentence to correctly complete it.

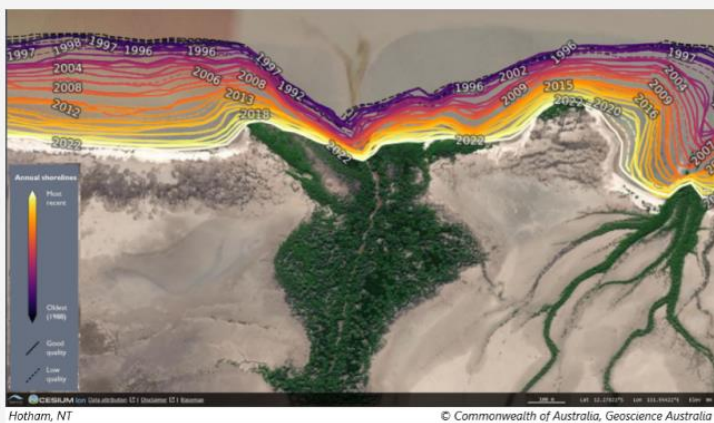
accreting advancing depositing

In this image, the coastline is **retreating**.

Flag

Next

Question 2 of 40



The change at this coastline is most likely due to which of these processes?

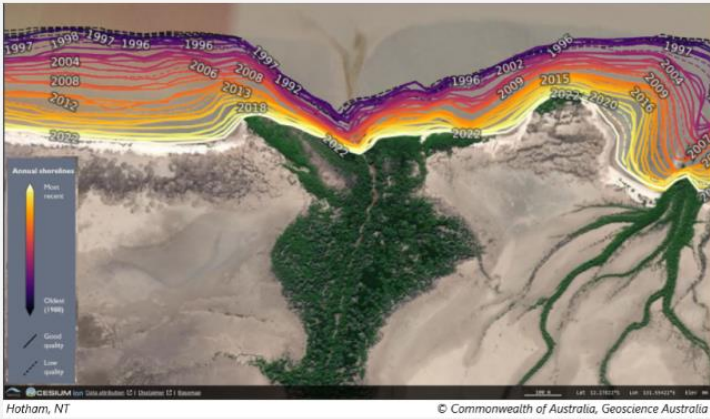
- changes in wave size
- tidal range change
- coastal erosion
- sand mining activities

Back

Flag

Next

Question 3 of 40



Which type of vegetation can be seen in the image?

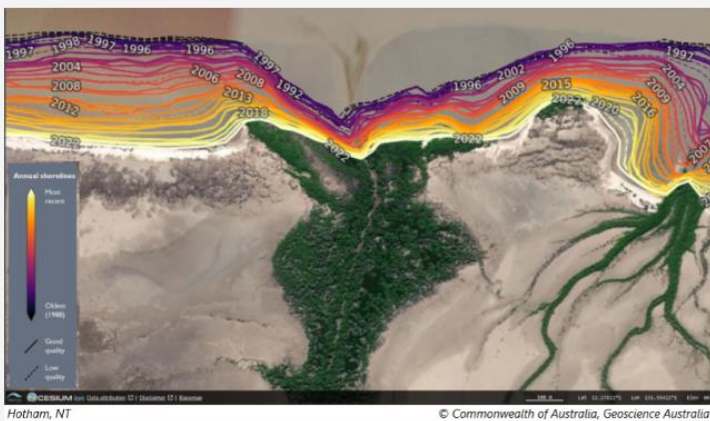
- grassland
- mangroves
- rainforest
- savannah

Back

Flag

Next

Question 4 of 40



Which of these fieldwork techniques would be the most useful in analysing the vegetation in the image?

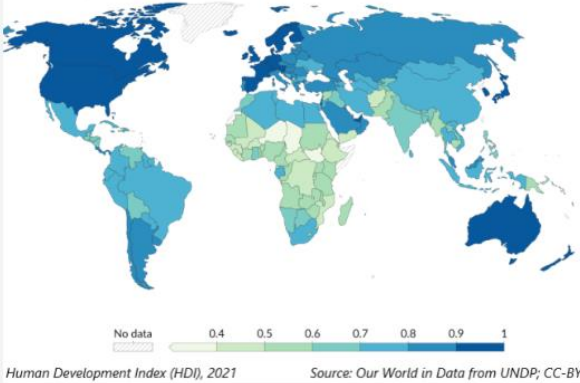
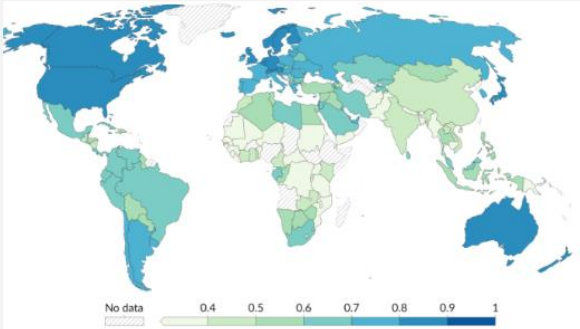
- interviewing
- water quality testing
- soil profiling
- transect sampling

Back

Flag

Next

Question 5 of 40



In which of these countries did the HDI score improve the most between 1990 and 2021?

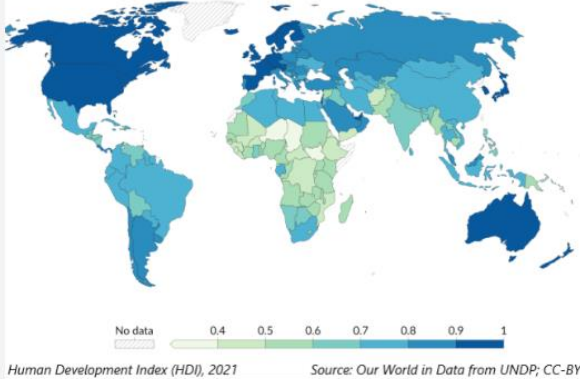
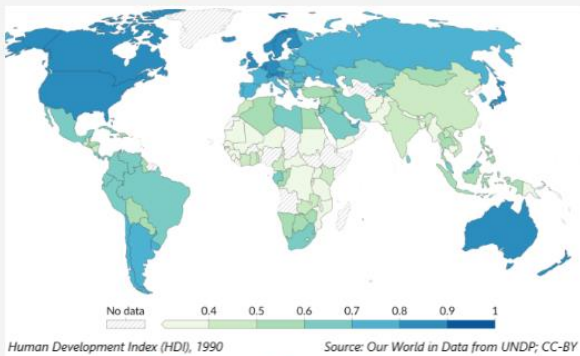
- India
- China
- Australia
- Brazil

Back

Flag

Next

Question 6 of 40



Which of these contribute to Sub-Saharan Africa's lower HDI scores? Select all that apply.

- poor governance
- continuing conflicts
- lack of resources
- widespread corruption

Back



Flag

Next

Question 7 of 40 

Which of these dimensions of human development does the HDI measure?

- income, governance, health
- education, health, income
- health, sustainability, education
- sustainability, governance, income

[Back](#)[Flag](#) [Next](#) Question 8 of 40 

Forest loss © NASA Earth Observatory

At which scale is forest loss occurring in this video?

- global
- national
- regional
- local

[Back](#)[Flag](#) [Next](#) 



Question 9 of 40



Forest loss © NASA Earth Observatory

Which of these statements best explains why forest is being lost, as shown in the video?

- Forests naturally grow and decline due to seasonal temperature changes.
- Climate change is causing forests to dry out and die.
- Farming such as cattle grazing is replacing forests.
- Forests are being cut down as the demand for timber increases.

Back

Flag

Next



Question 10 of 40



Forest loss © NASA Earth Observatory

In which river basin is the forest loss shown in the video mainly occurring? Type your answer in the box.

Amazon

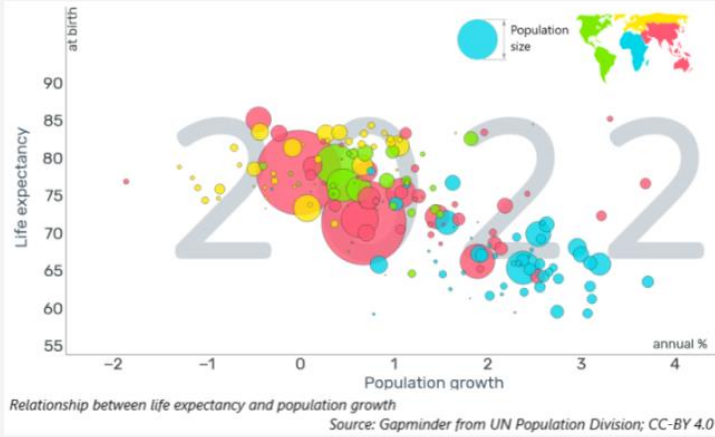
River

Back

Flag

Next

Question 11 of 40



Which type of correlation is shown in the graph?

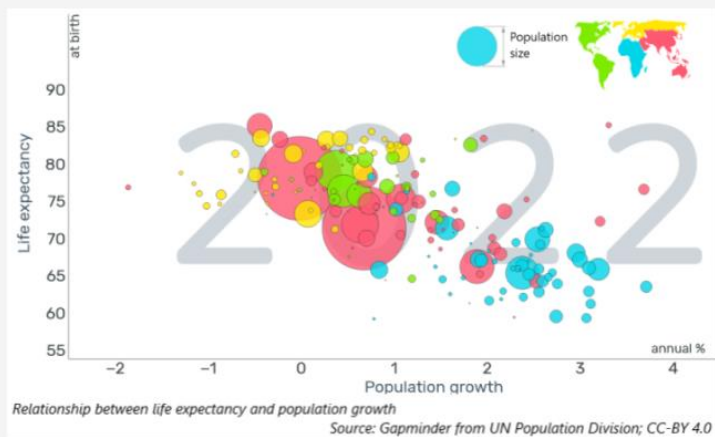
- negative
- none
- perfect
- positive

Back

Flag

Next

Question 12 of 40



Drag the location to correctly complete the sentence.

Asia/Oceania

The Americas

Africa

As seen in the graph, population is declining in some countries. Most of these countries are in .

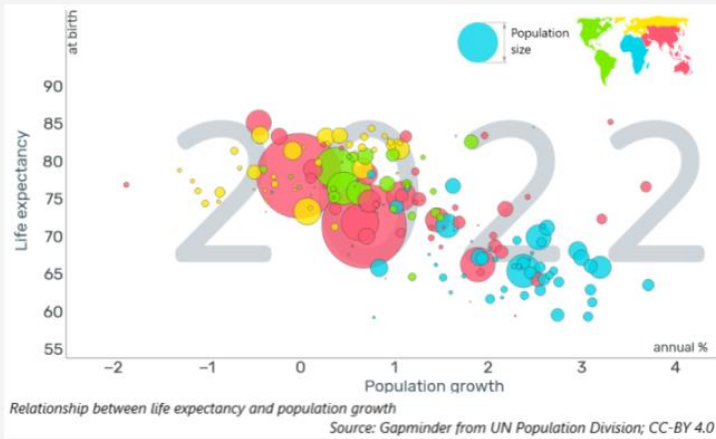
Back

Flag

Next



Question 13 of 40



Which of these statements best explains the pattern shown in the graph?

- As a country's population grows more quickly, the government increases health funding aimed at increasing life expectancy.
- Life expectancy is lower in more rapidly growing countries as many people choose to emigrate to other countries.
- People live longer and have fewer children as a country's income increases.
- As a country's population grows more slowly, people live longer as they no longer have as many children.

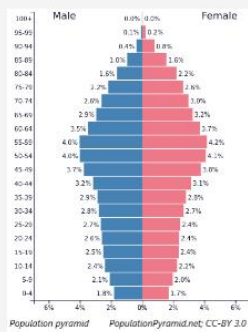
Back

Flag

Next

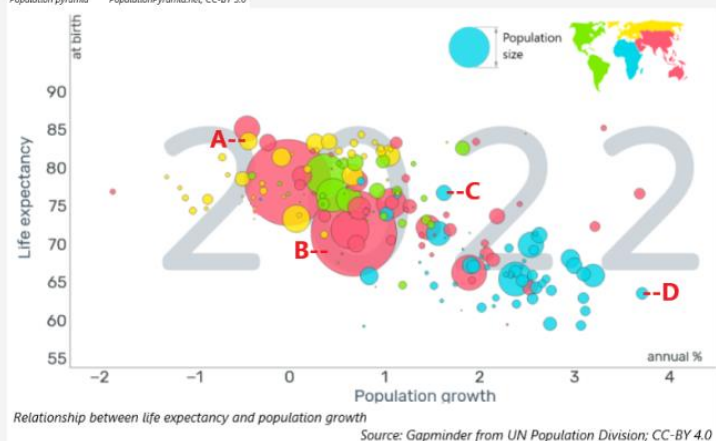


Question 14 of 40



This population pyramid is for which country marked in the graph?

- Country A
- Country B
- Country C
- Country D



Back

Flag

Next

Question 15 of 40

The Indigenous ranger in the photo is lighting fires to achieve which outcomes? Select all that apply.

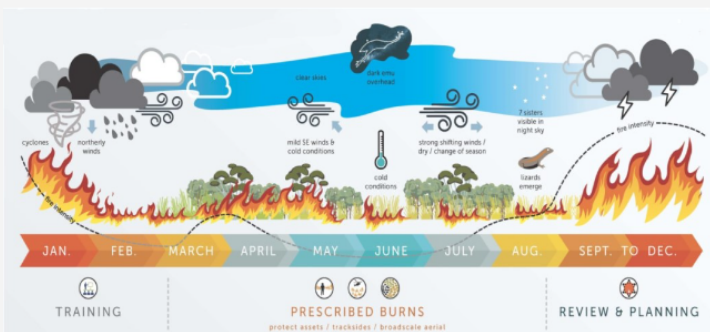
- to maintain diverse ecosystems
- to release carbon dioxide
- to clear land for agriculture
- to help control intense fires



Prescribed burning © 10 Deserts Project; Indigenous Desert Alliance

Back **Flag** **Next**

Question 16 of 40



Seasonal fire management in the Australian deserts © 10 Deserts Project; Indigenous Desert Alliance

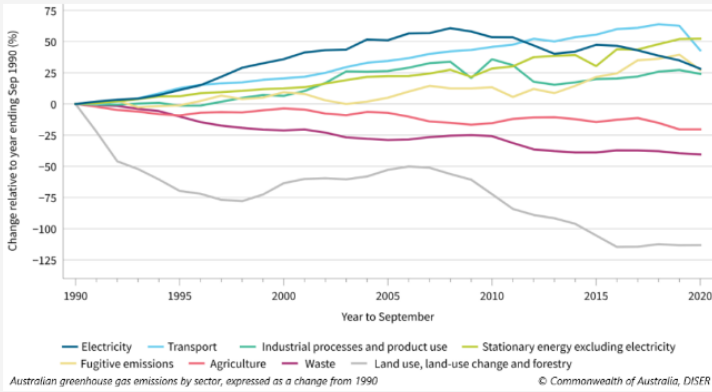
According to the poster, the best time for prescribed burns in Australian desert regions is:

- when the weather is cooler and more stable
- at the end of summer
- when rain is expected shortly afterwards
- soon after cyclones

Back **Flag** **Next**



Question 17 of 40



Using the graph, greenhouse gas emissions from which sector increased by the greatest percentage between 1990 and 2020?

- electricity
- land use, land use change and forestry
- stationary energy excluding electricity
- transport

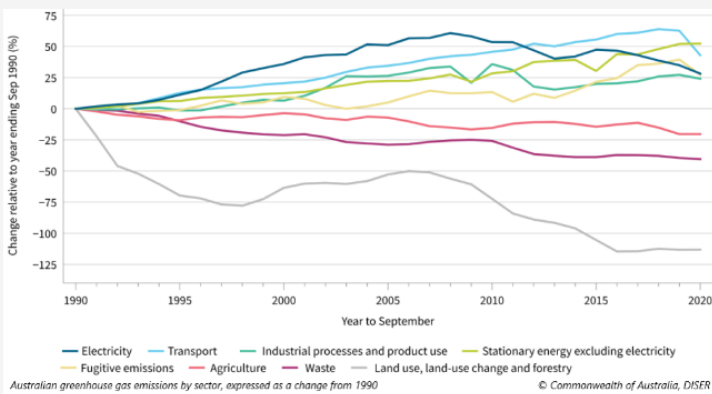
Back

Flag

Next



Question 18 of 40



Between 1990 and 2009, by how much did greenhouse gas emissions from the waste sector decrease? Enter your number in the box.

 %

Acceptable answers:

24

25

26

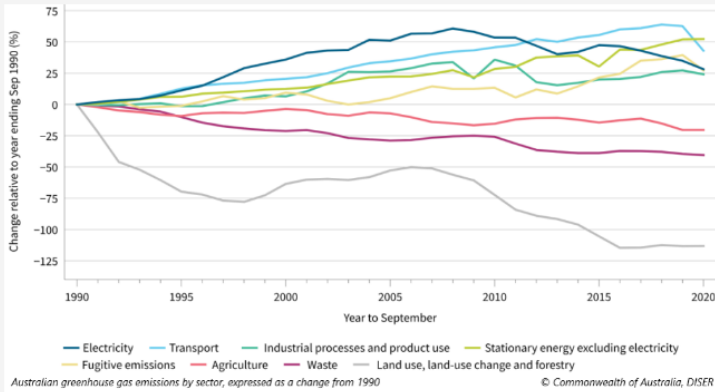
Back

Flag

Next



Question 19 of 40



On 26 November 2023, Australia's Minister for Climate Change and Energy said that "we are now on track for 42% emissions reduction by 2030" [compared to 2005].

Based on the graph, which of these factors made the most significant contribution to the emissions reduction up to 2020?

- increasing electricity generation from renewables
- regrowth of forest on previously cleared land
- carbon capture and storage
- rising number of electric vehicles



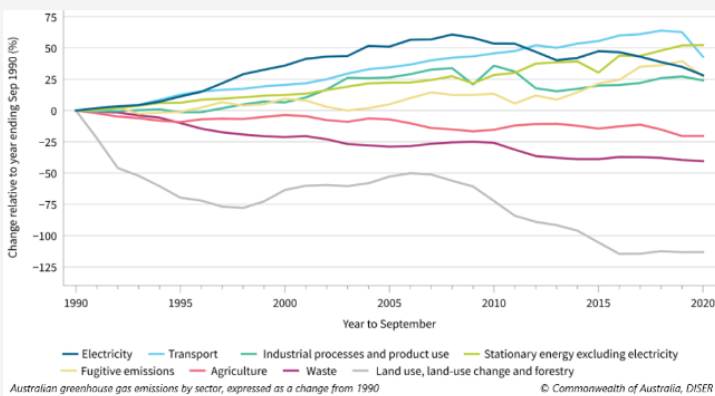
Back

Flag

Next



Question 20 of 40



Which of these sectors showed a decline in greenhouse gas emissions due to COVID-19 restrictions?

- transport
- agriculture
- electricity
- waste

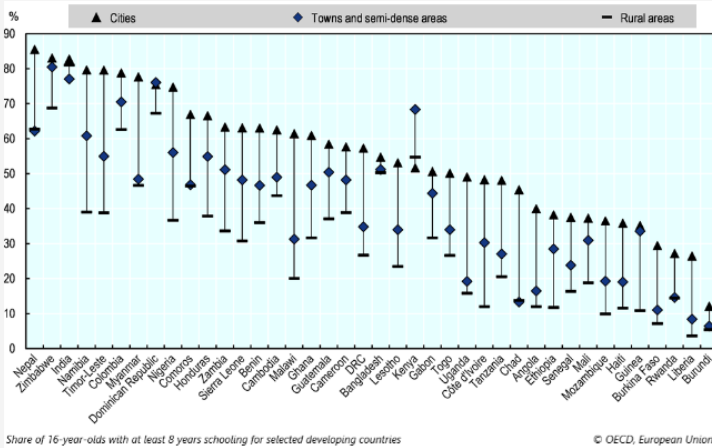


Back

Flag

Next

Question 23 of 40



Based on the graph, drag the countries below into the correct order for the percentage of 16-year-olds with at least 8 years of schooling in towns and semi-dense areas – from the most at the top to least at the bottom.

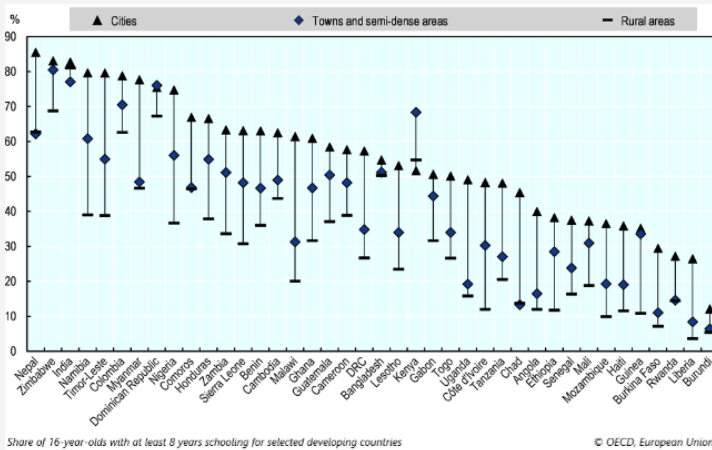
- India
- Columbia
- Nepal
- Timor-Leste

Back

Flag

Next

Question 24 of 40



Kenya's data in the graph is anomalous because:

- its 16-year-olds from rural areas have the lowest percentage with at least 8 years of schooling
- there is an unusually large geographical difference in years of schooling in Kenya depending on where its 16-year-olds live
- a much higher percentage of its 16-year-olds from cities have at least 8 years of schooling compared to those from cities in other countries
- a much higher percentage of its 16-year-olds from towns and semi-dense areas have at least 8 years of schooling compared to those from its cities

Back


Flag

Next

Question 25 of 40 

In developing countries, the largest barrier to children attending school in rural areas tends to be:

- language difficulties
- use of children as farm labourers
- low literacy rates
- the cost of schooling



[Back](#)Flag [Next](#) Question 26 of 40 

Indigenous status	2005-07	2010-12	2015-17	2020-22
Indigenous males	67.2	69.1	71.6	71.9
Non-Indigenous males	78.7	79.7	80.2	80.6
Indigenous females	72.9	73.7	75.6	75.6
Non-Indigenous females	82.6	83.1	83.4	83.8

Australians' life expectancy at birth (in years) by Indigenous status
Data source: ABS

Using the data in the table, the life expectancy of which group increased the most between 2005-07 and 2020-22?

- Indigenous females
- Non-Indigenous females
- Non-Indigenous males
- Indigenous males

[Back](#)Flag [Next](#) 

Question 27 of 40

Indigenous status	2005-07	2010-12	2015-17	2020-22
Indigenous males	67.2	69.1	71.6	71.9
Non-Indigenous males	78.7	79.7	80.2	80.6
Indigenous females	72.9	73.7	75.6	75.6
Non-Indigenous females	82.6	83.1	83.4	83.8

Australians' life expectancy at birth (in years) by Indigenous status
Data source: ABS

The Commonwealth and state governments have a target to close the gap in life expectancy between Indigenous and Non-Indigenous Australians by 2031.

Which statement best represents the data in the table?

- The gap is closing but not quickly enough to reach the target.
- The gap is closing quickly enough to reach the target.
- The gap is increasing.
- The gap was closing but the trend reversed in 2020-22.

Back Flag Next

Question 28 of 40

The ABS notes that a significant **non-demographic** increase in the Indigenous population between the 2016 and 2021 Censuses, means that the changes in life expectancy between those Censuses are indistinguishable from genuine changes.

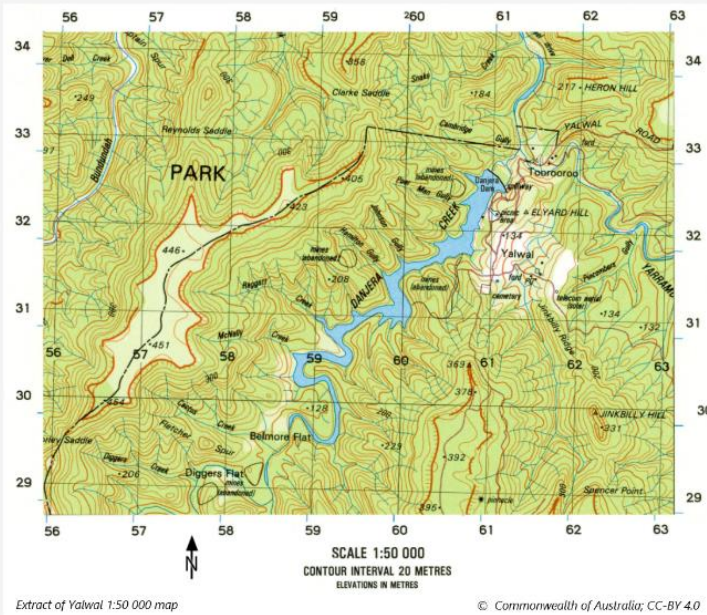
Which of these are non-demographic factors in the increase in the Indigenous population? Select all that apply.

- identifying as Indigenous in 2021 but not 2016
- number of births between 2016 and 2021
- completing the census in 2021 but not 2016
- number of deaths between 2016 and 2021

Back Flag Next



Question 29 of 40



Based on the map, in which direction does Danjerra Creek flow?

- southeast
- northwest
- southwest
- northeast



Back

Flag

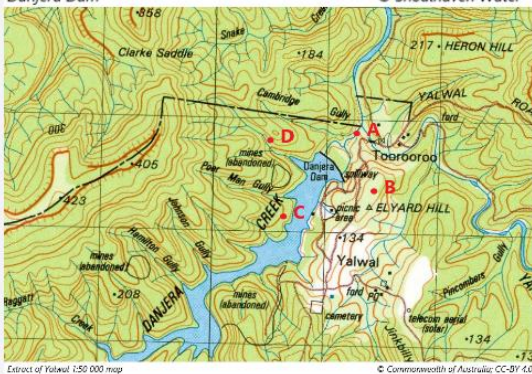
Next



Question 30 of 40



Danjerra Dam © Shoalhaven Water



Extract of Yalwal 1:50 000 map © Commonwealth of Australia; CC-BY 4.0

At which point on the map was the drone camera when the photo was taken?

- Point A
- Point B
- Point C
- Point D



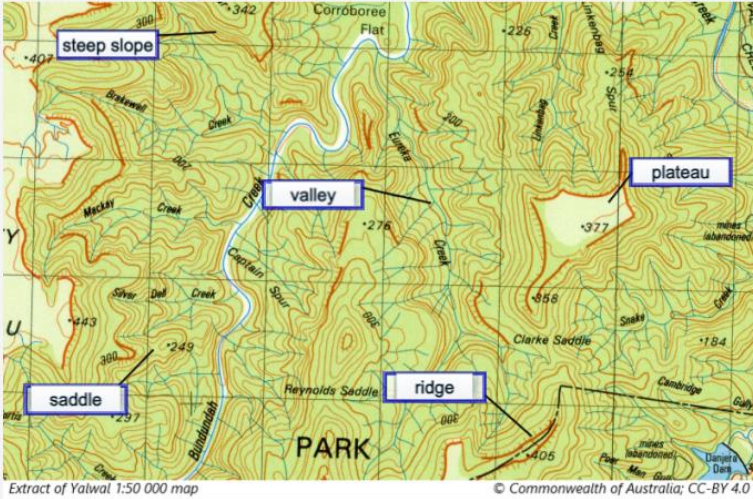
Back

Flag

Next



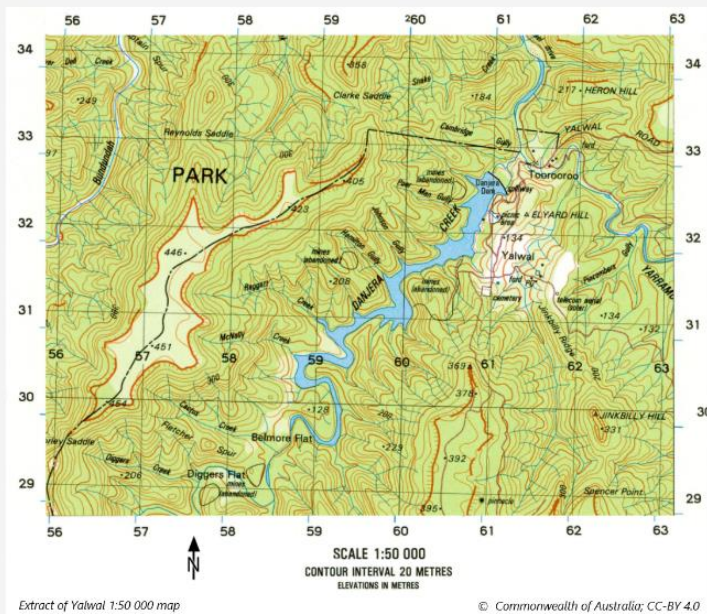
Label the landforms by dragging the correct term onto the map.



Back

Flag

Next



Using the map, what is the approximate height above sea level of the lake on Danjerra Creek?

- 10m
- 50m
- 70m
- 90m

Back

Flag

Next



What are the goals in the graphic known as?

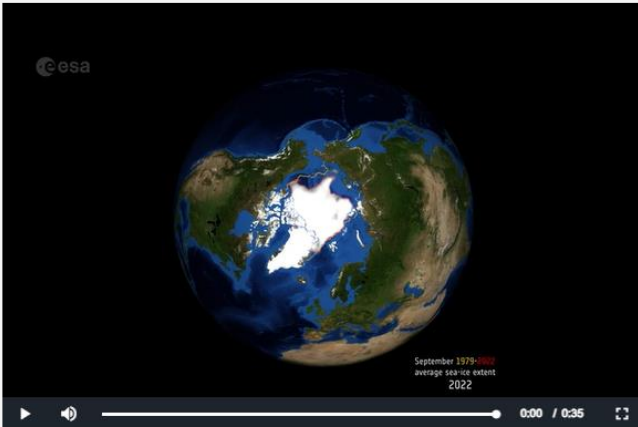
- Human Development Goals
- Millenium Development Goals
- Sustainable Development Goals
- Health and Wellbeing Goals



Match the programmes listed in the table with the most appropriate goal from the image. Enter the goal number in the table.

Development Programme	Goal Number
Assisting the Philippines government with economic analyses and design to expand a busy port	9
A project in Burundi that improved the productivity of local nutritious beans and encouraged kitchen gardens	2
A project in Nepal that increased the number of households with flushing toilets	6
Improved street lighting in South Africa that helped make it safer to walk home at night	16

Question 35 of 40



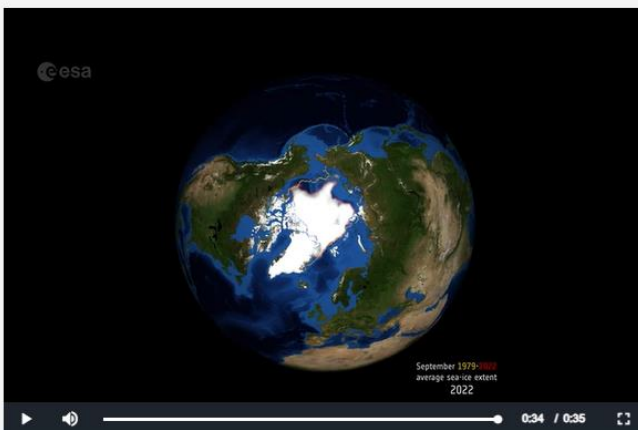
Arctic sea-ice September extent 1979-2022 © ESA

The decline in sea-ice shown in the video has been exacerbated by:

- human-induced climate change
- changes in ocean currents
- ocean acidification
- natural cycles in the Earth's atmosphere

[Back](#)[Flag](#)[Next](#)

Question 36 of 40



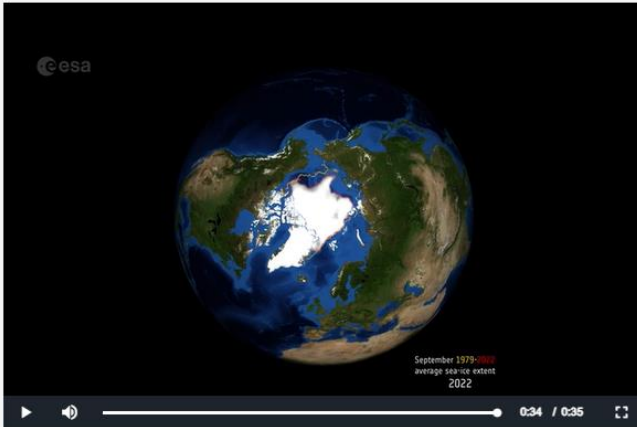
Arctic sea-ice September extent 1979-2022 © ESA

From the video, estimate the percentage difference in September sea-ice between 1979 and 2022.

- 5%
- 15%
- 30%
- 45%

[Back](#)[Flag](#)[Next](#)

Question 37 of 40



Arctic sea-ice September extent 1979-2022 © ESA

Climate scientists are particularly concerned about this decline in sea-ice because a **direct** consequence is:

- a decrease in albedo
- a change in ocean currents
- an acceleration of warming temperature
- a rise in sea level

Back

Flag

Next

Question 38 of 40



Glenelg, SA © Government of South Australia; CC-BY

What is the general direction of the longshore drift in the area shown in the image?

- southwards
- northwards
- westwards
- eastwards

Back

Flag

Next

Question 39 of 40



Glenelg, SA © Government of South Australia; CC-BY

Drag the term into the sentence to correctly complete it.

levee

breakwater

sea wall

The structure shown at B on the image is a **groyne**.

Back

Flag

Next

Question 40 of 40



Glenelg, SA © Government of South Australia; CC-BY

The structure shown at A on the image is designed to:

- protect swimmers from large waves
- deflect sand from the river mouth
- trap sand and protect infrastructure
- encourage the formation of a spit

Back

Flag

Next