



AUSTRALIAN GEOGRAPHY COMPETITION

2024 Year 11 - answers

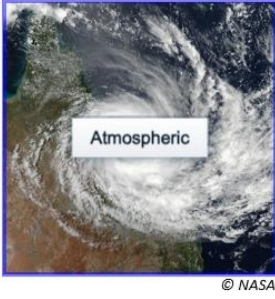
The screenshot displays the competition's user interface. At the top, a blue header contains a magnifying glass icon and the word "Instructions". Below this, a welcome message states: "Welcome to the 2024 Australian Geography Competition! You have 30 minutes to complete 40 questions." A note follows: "NOTE: Due to the size of some graphics, you may need to scroll down the page to see the complete graphic." The main content area is divided into two columns. The left column shows a series of question tiles, each with a timer (60:29), a question number (e.g., "Question 1 of 40"), and a flag icon. A "Progress summary" section at the bottom left shows a grid of question numbers (0-9) with status indicators for "Answered", "Not answered", "Not read", and "Flagged". The right column contains instructions: "For some questions you can expand the size of the graphic by clicking the arrow in the centre of the page.", "Some questions may require the use of a calculator. To use, click on the icon at the top right of the screen. To turn off, click the icon again.", "If you want to enlarge a graphic or text, click on the magnifying glass at the top left of the screen.", "There is a timer count-down at the top left of the screen.", "The flag button at the bottom right of the screen can be used as a reminder for a question you want to come back to. On the question overview page you can see which questions you flagged.", "The tiles button in the top middle of the screen next to the question number takes you to the question overview.", "The question overview shows a summary of questions not started, completed or flagged." At the bottom of the page, a blue bar contains a "Flag" button with a flag icon and a "Next" button with a right-pointing arrow. Logos for the Australian Government, The University of Melbourne, UNSW Sydney, Australian Institute for Disaster Resilience, and Flinders University are displayed in the footer.

*note: on a question where this is more than one drop down to be answered, and only one list is visible, all answer options are the same for each of the drop downs

Question 1 of 40

Classify the hazards by dragging the correct label onto each image.

Chemical



Flag Next

Question 2 of 40



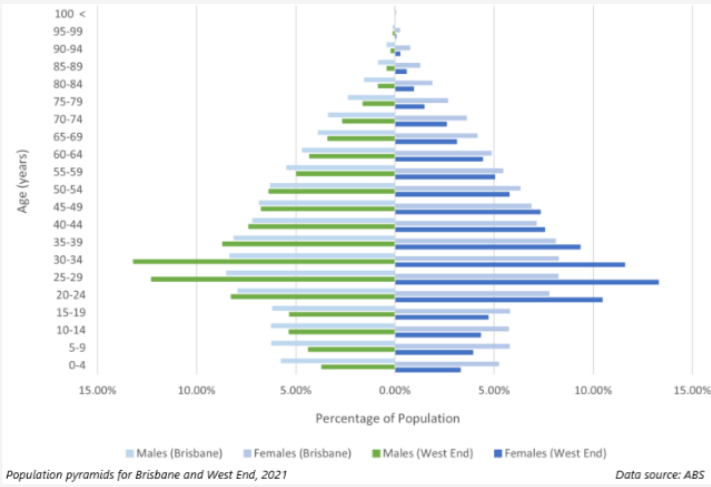
Which of these was a primary impact of the event shown in the image?

- disruption of economic activity
- increased risk of future disasters
- changes in urban planning
- loss of biodiversity

Back Flag Next



Question 3 of 40



Correctly complete the sentence.

expansive

stationary

The population pyramid for Brisbane is described as

constrictive

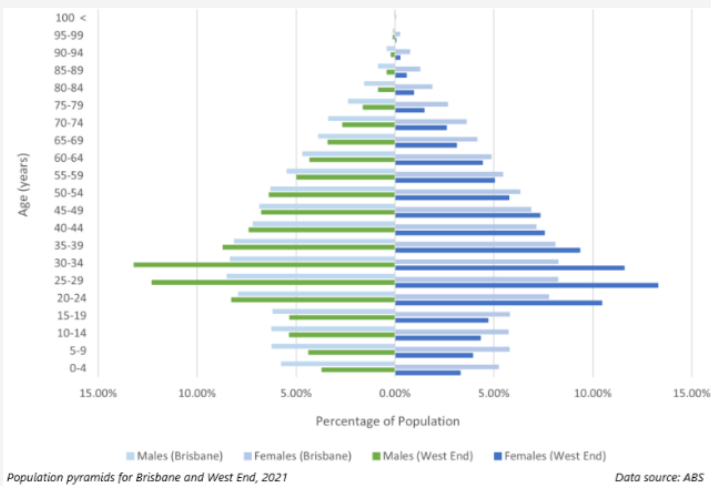
Back

Flag

Next



Question 4 of 40



Which of these statements about Brisbane can be inferred from the population pyramid?

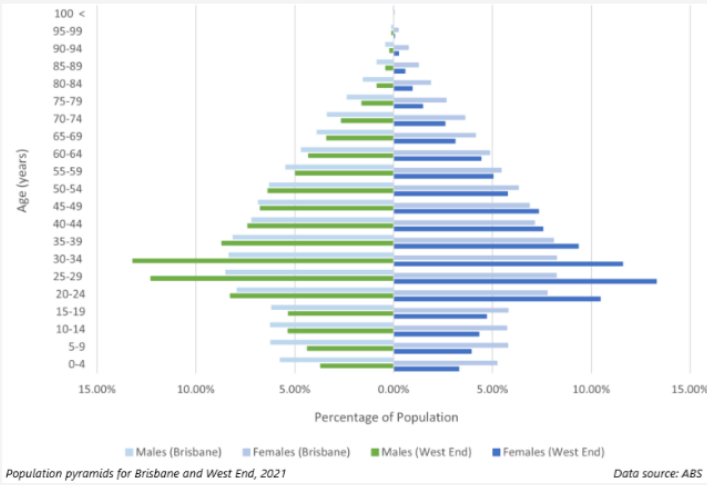
- Health care is poor.
- Fertility is high.
- Life expectancy is low.
- Birth rates are declining.

Back

Flag

Next

Question 5 of 40



Which of these factors could account for the spike in the age structure of West End?

- availability of schools and playgrounds
- proximity to aged care and health services
- proximity to tertiary education and employment
- low-density housing

Back

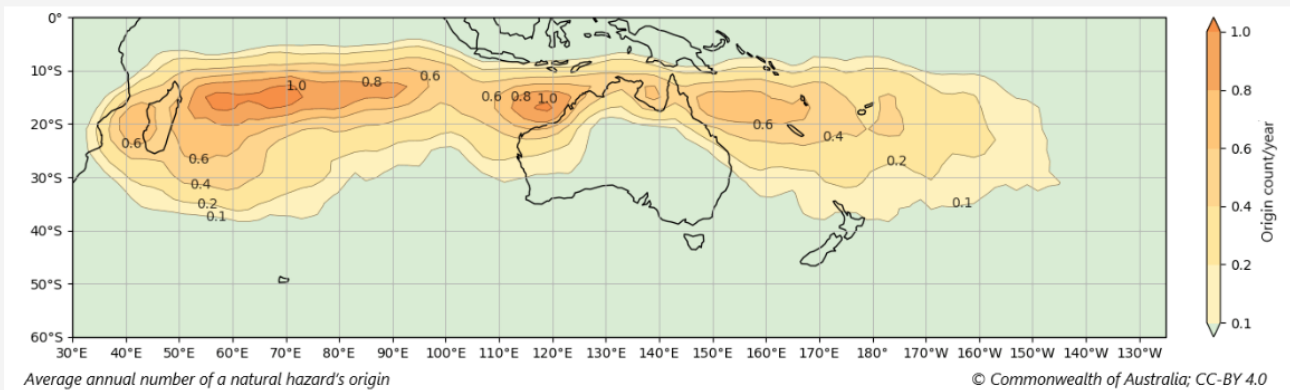
Flag

Next

Question 6 of 40

The map relates to which of these hazards?

- tsunami
- flooding
- volcanic activity
- tropical cyclone



Back

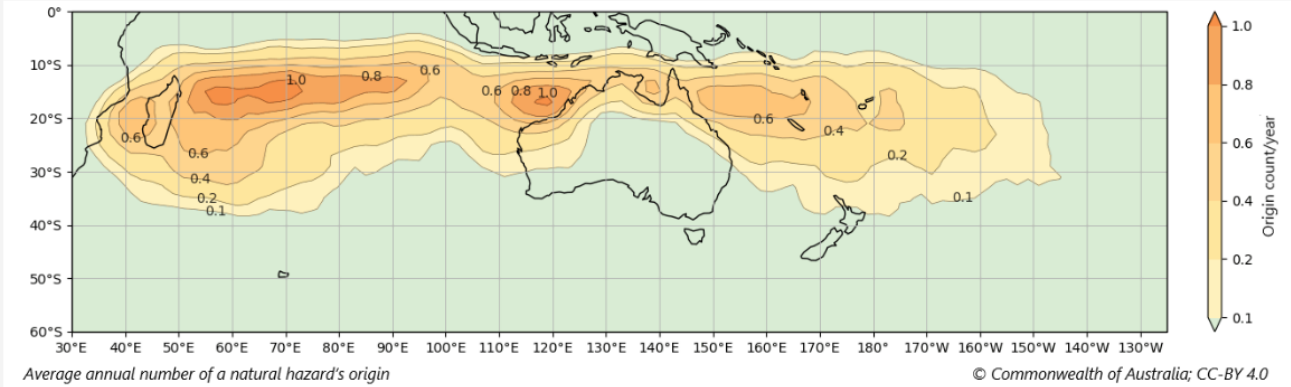
Flag

Next

Question 7 of 40

Which region shown on the map is the origin location with the highest average annual count?

- Indian Ocean
 Tasman Sea
 Pacific Ocean
 Coral Sea



Back

Flag

Next

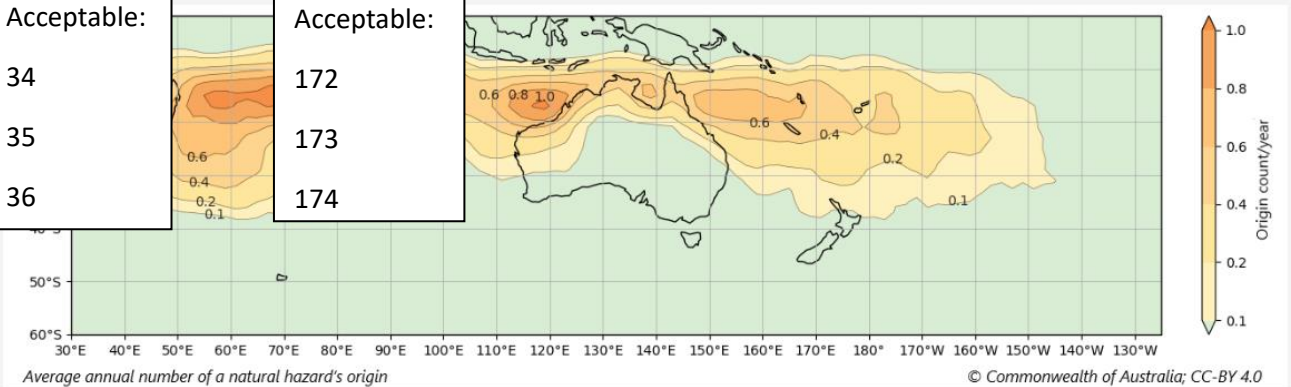
Question 8 of 40

Using the map, what are the approximate coordinates of the northern tip of New Zealand? Using whole degrees, type your answer in the boxes.

deg S, deg E

- Acceptable:
- 34
 - 35
 - 36

- Acceptable:
- 172
 - 173
 - 174

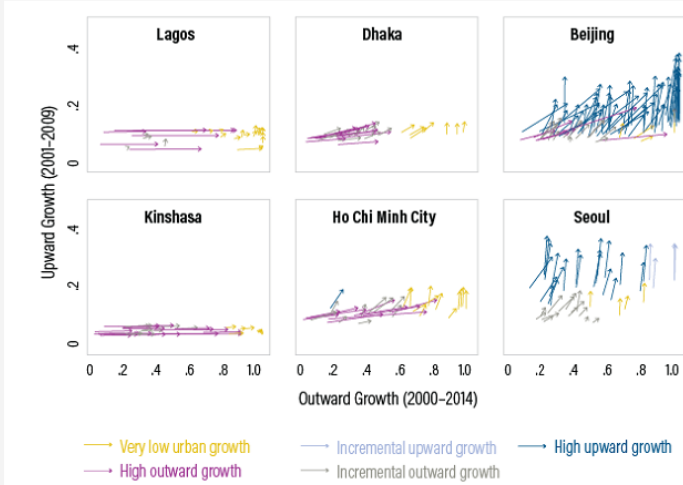


Back

Flag

Next

Question 9 of 40



Note: The arrows represent different areas within a city. The length of each arrow captures change in built-up area over time.
 Upward and outward growth in built-up area for selected cities
 © World Resources Institute; CC-BY 4.0

Using the graphs, correctly complete the sentence.

Beijing Ho Chi Minh City Kinshasa

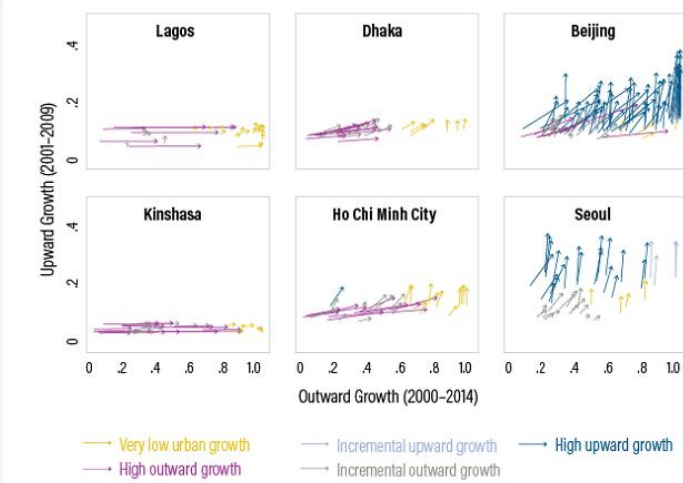
Of the cities in the graphs, Seoul experienced the least urban sprawl from 2000 to 2014.

Back

Flag

Next

Question 10 of 40



Note: The arrows represent different areas within a city. The length of each arrow captures change in built-up area over time.
 Upward and outward growth in built-up area for selected cities
 © World Resources Institute; CC-BY 4.0

Based on the graphs, which description of Beijing's and Seoul's population density from 2000 to 2014 is accurate?

- increasing
- static
- decreasing

Back



Flag

Next

Question 11 of 40 



What are some of the negative social/economic impacts of urban sprawl in Australian cities? Select all that apply.

- increased infrastructure costs
- decreased dwelling size
- traffic congestion
- quieter neighbourhoods

[Back](#)Flag [Next](#) Question 12 of 40 

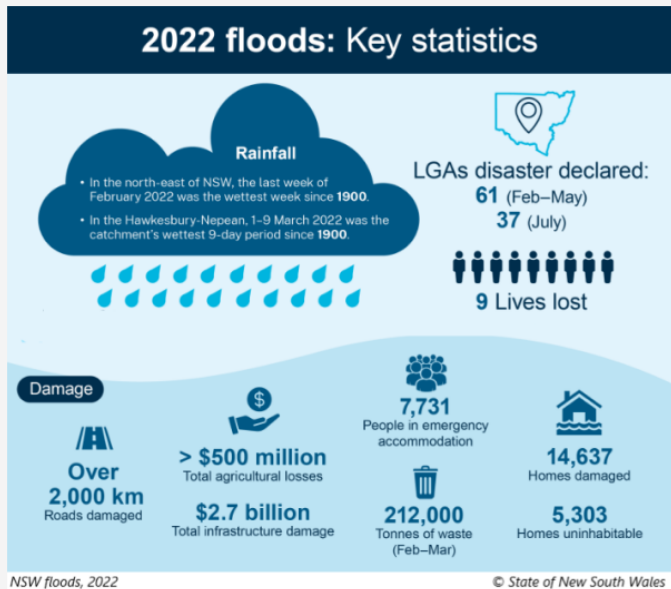
What are some of the negative environmental impacts of urban sprawl in Australian cities? Select all that apply.

- reduced energy consumption
- soil degradation
- habitat fragmentation
- increased pollution

[Back](#)Flag [Next](#) 

Which of these is a realistic strategy for governments to limit urban sprawl?

- confine public transport to inner-city areas
- proscribe land releases on the edge of cities
- limit population growth in large cities
- promote infill development in planning regulations



Identify the primary category of the damages from NSW's 2022 floods by dragging the correct term into the table.

	Social	Economic	Environmental
Damages			
7,731 people in emergency housing	Social		
212,000 tonnes of waste			Environmental
9 lives lost	Social		
>\$500 million agricultural losses		Economic	
>2,000km roads damaged		Economic	

Question 15 of 40

What is a primary factor contributing to the formation of tropical cyclones in the western Pacific?

- monsoons
- warm ocean waters
- lunar cycles
- El Niño phenomenon

Back Flag Next

Question 16 of 40

Classify these impacts of drought in Australia by dragging the appropriate term into the table.

	primary impact	secondary impact	tertiary impact
Impact	Classification		
increased erosion		secondary impact	
poor crop yields	primary impact		
reduction in grasses and shrubs	primary impact		
reduced farming profits		tertiary impact	
less food to markets		secondary impact	

Back Flag Next



Question 17 of 40



The Indigenous ranger in the photo is lighting fires to achieve which outcomes? Select all that apply.

- to clear land for agriculture
- to release carbon dioxide
- to help control intense fires
- to maintain diverse ecosystems



Prescribed burning

© 10 Deserts Project, Indigenous Desert Alliance

Back

Flag

Next



Question 18 of 40



Drag the colour name to correctly complete the sentence.

purple

orange

green

The lowest temperature in the heat map, is indicated by

blue

Back

Flag

Next

Question 19 of 40



Which geographic challenge is evident in the heat map?

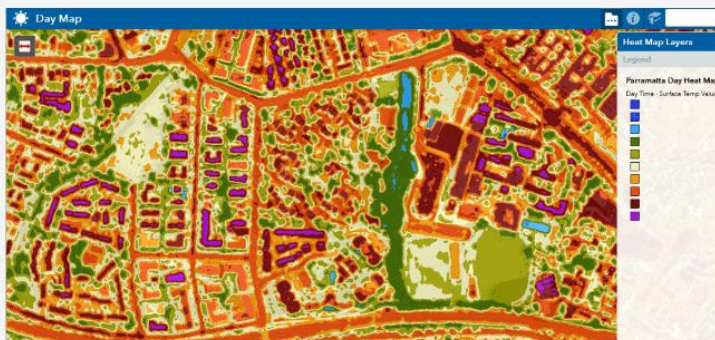
- urban heat island
- a hot spot in the underlying mantle
- global warming
- temperature inversion

Back

Flag

Next

Question 20 of 40



Based on the images, which is the most significant factor in the differences between building temperatures?

- orientation of the building
- the colour of the roof
- shading on the south side
- distance from the main road

Back

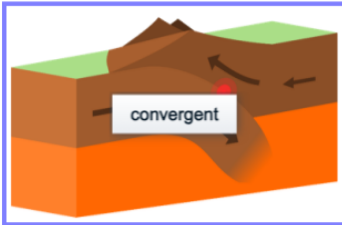
Flag

Next

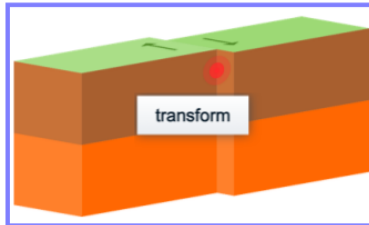
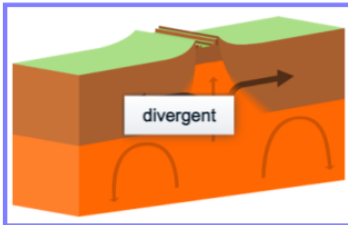
Question 21 of 40

Drag the label onto each diagram to correctly identify it.

hotspot



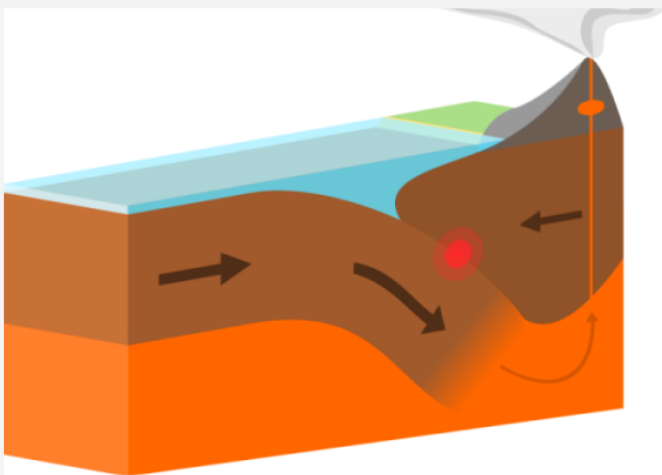
Tectonic plate boundaries



© Domdomegg; CC-BY 4.0

Back Flag Next

Question 22 of 40



Tectonic plate boundary

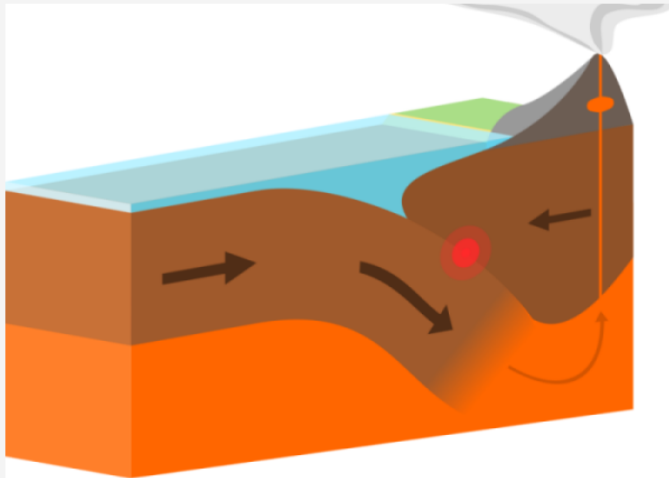
© Domdomegg; CC-BY 4.0

Which process of tectonic plate movement is shown in the diagram?

- spreading
- slip-strike
- coalescence
- subduction

Back Flag Next

Question 23 of 40



Tectonic plate boundary

© Domdomegg; CC-BY 4.0

Which of these mountain ranges is still actively growing through the processes shown in the diagram?

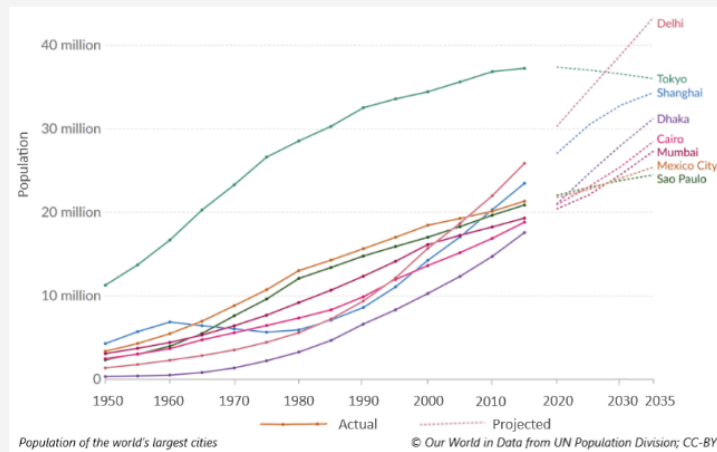
- Andes, South America
- Ural Mountains, Russia
- Great Dividing Range, Australia
- Transantarctic Mountains, Antarctica

Back

Flag

Next

Question 24 of 40



Using the graph, when did Tokyo add the largest number of inhabitants?

- 1950-1955
- 1960-1965
- 1975-1980
- 2010-2015

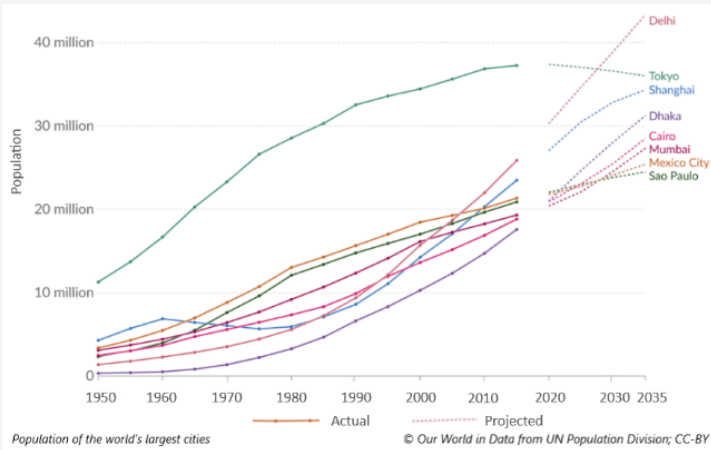
Back

Flag

Next



Question 25 of 40



The cities which have the highest projected growth rates in the graph:

- are in less economically developed countries
- have aging populations
- have low fertility rates
- have small populations

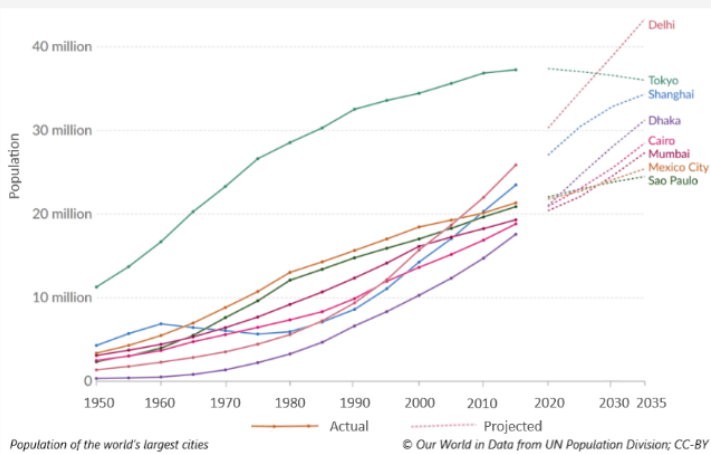
Back

Flag

Next



Question 26 of 40



Using the graph, when did Dhaka become a megacity?
Type the year in the box.

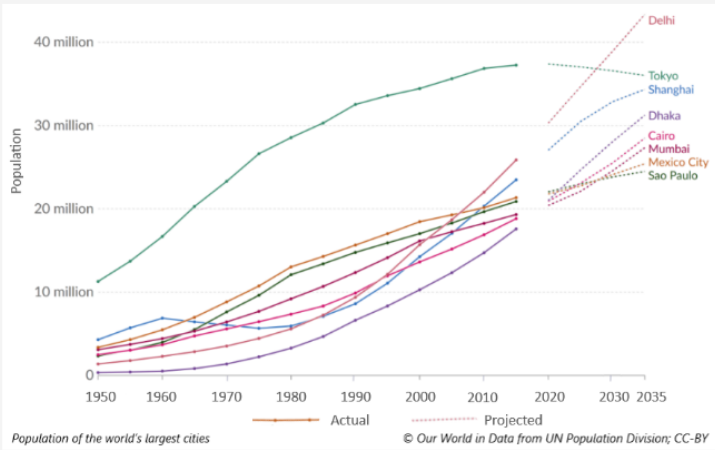
2000

Back

Flag

Next

Question 27 of 40



What is the most likely reason for the projected decline in Tokyo's population?

- an ageing population
- a government policy to relocate people to rural areas
- a consequence of a falling birth rate
- emigration to other countries

Back Flag Next

Question 28 of 40

Census	Population
1901	405,819
1911	413,851
1921	488,452
1931	636,246
1941	917,939
1951	1,744,072
1961	2,658,612
1971	4,065,698
1981	6,220,406
1991	9,420,644
2001	13,782,976
2011	16,753,235
2021*	23,000,000

Delhi population
Source: Census of India; 2021 Delhi Development Authority

For this question you may use the on-screen calculator. Click on the icon in the top right corner.

Calculate the rate of growth of Delhi's population between 1991 and 2001. Round your answer to the nearest whole number and enter in the box.



46 %

Back Flag Next

Question 29 of 40 

Which of these are common impacts of rapid population growth? Select all that apply.



- strain on health services
- better access to fresh food
- ageing population
- increased economic activity

[Back](#)Flag [Next](#) Question 30 of 40 

China evaluates the urban development of its cities using the 'China Integrated City Index'. One of the sub-dimensions of the Index is Spatial Structure.

Which of these indicator groups are used to evaluate the cities' spatial structure? Select all that apply.

- Economic Efficiency
- Social Management
- Compact City
- Transportation Network

[Back](#)Flag [Next](#) 

Question 31 of 40



Concepción, Chile

© C Núñez; CC-BY-SA 2.0

Which natural hazard damaged the city in the photo?

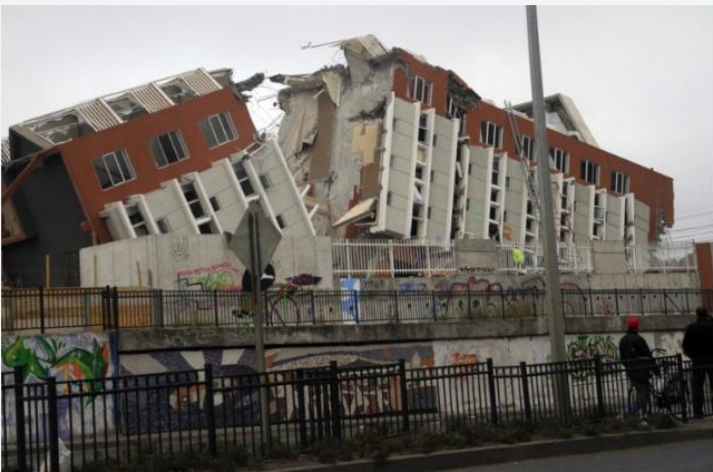
- tsunami
- cyclone
- flooding
- earthquake

Back

Flag

Next

Question 32 of 40



Concepción, Chile

© C Núñez; CC-BY-SA 2.0

What are some of the ways to mitigate the effects of the natural hazard in the photo? Select all that apply.

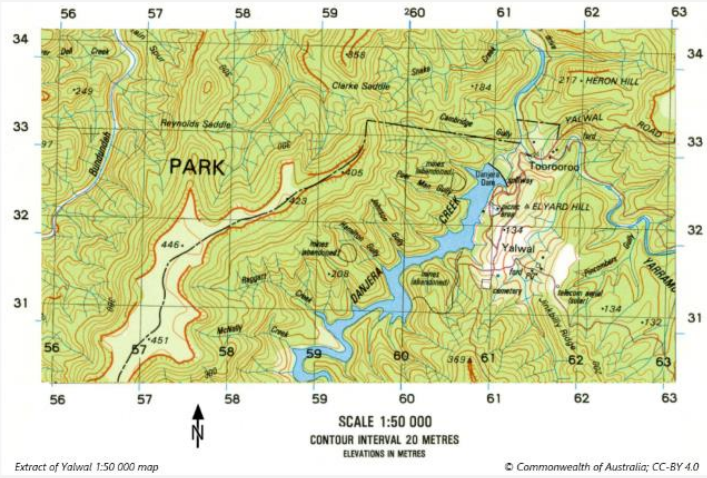
- practice evacuation drills
- early warning systems
- mandate resilient structures
- safety education programmes

Back

Flag

Next

Question 33 of 40



Drag the term to correctly complete the sentence.

- minutes
- northings
- degrees

The numbers on the top and bottom of the map represent

eastings

Back

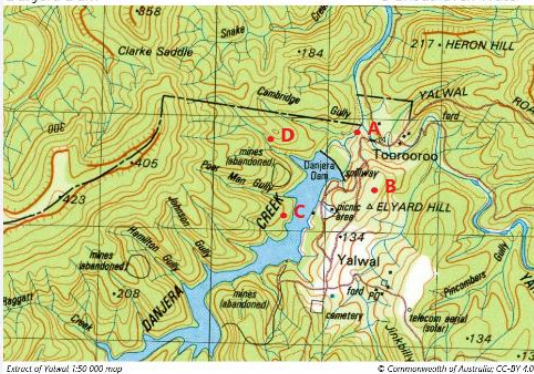
Flag

Next

Question 34 of 40



Danjera Dam © Shoalhaven Water



At which point on the map was the drone camera when the photo was taken?

- Point A
- Point B
- Point C
- Point D

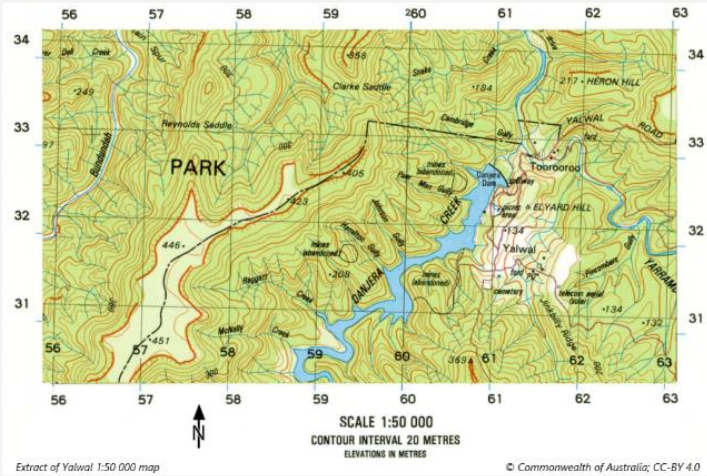
Back

Flag

Next



Question 35 of 40



What is the grid reference for the southeastern end of Danjera Dam?

- 333° 609°
- 336,611
- 611° 325°
- 612,324

Back

Flag

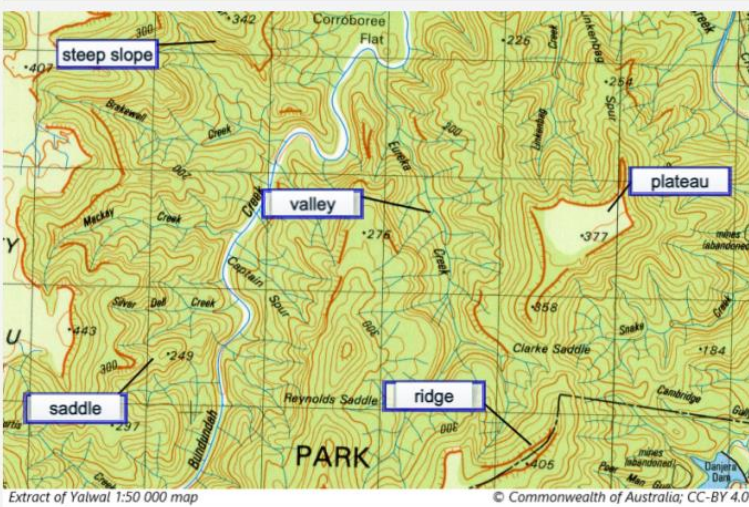
Next



Question 36 of 40



Label the landforms by dragging the correct term onto the map.



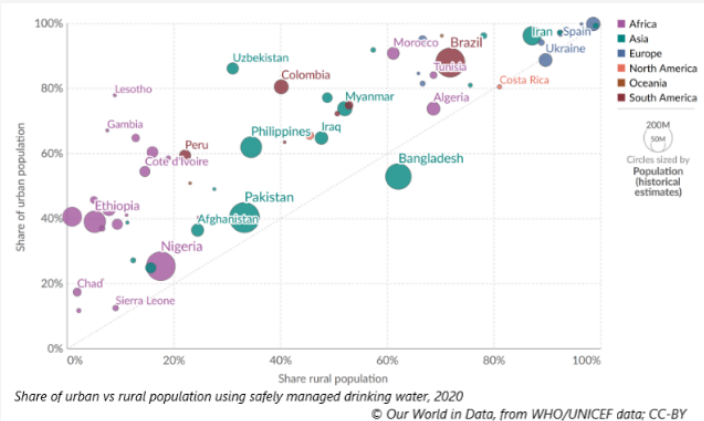
Back

Flag

Next



Question 37 of 40



What percentage of rural dwellers had access to safely managed drinking water in Lesotho (see top left of graph)? Enter a whole number in the box.

%

Acceptable answers:

- 7
- 8
- 9
- 10
- 11

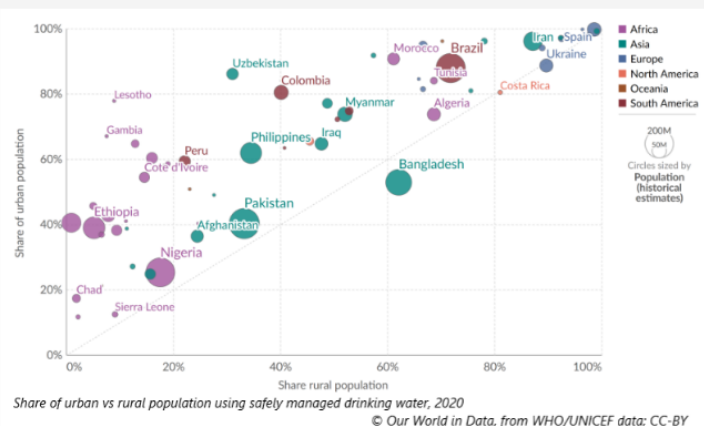
Back

Flag

Next



Question 38 of 40



Which country represents an anomaly to the trend evident in the graph?

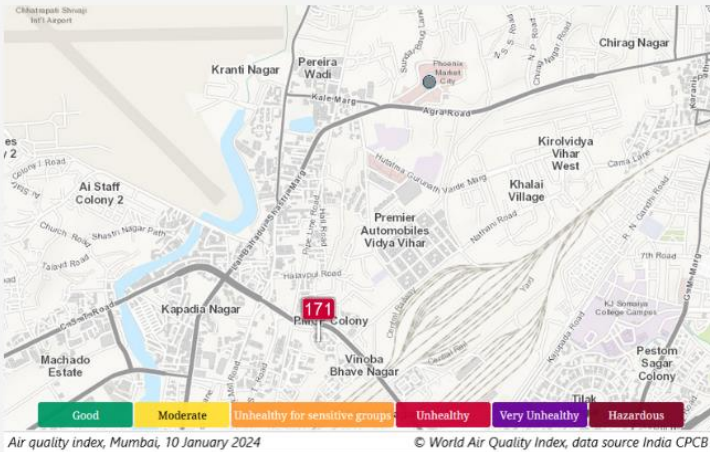
- Uzbekistan
- Bangladesh
- Chad
- Spain

Back

Flag

Next

Question 39 of 40



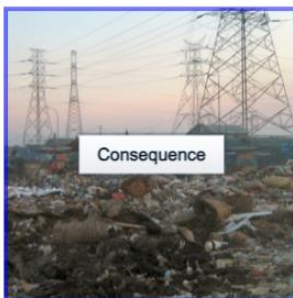
Which of these factors would contribute to the pollution level shown on the map? Select all that apply.

- population density
- wastewater
- industry
- transport

Back **Flag** **Next**

Question 40 of 40

Select the image which best shows a consequence of densely populated urban environments, by dragging the term onto the image.



Tanjung Priok, Indonesia © Hulie; CC-BY-SA 2.5



Phoenix, USA © T Tuson; CC-BY 4.0



Vosges, France © C Amet; CC-BY 3.0



Goa, India © I Keating; CC-BY 2.0

Consequence

Back **Flag** **Next**