





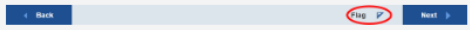



AUSTRALIAN GEOGRAPHY COMPETITION

2024 Year 8 - answers

Welcome to the 2024 Australian Geography Competition!

You have 30 minutes to complete 30 questions.

NOTE: Due to the size of some graphics, you may need to scroll down the page to see the complete graphic.



Progress summary


Show all 4 Answered 22 Not answered 22 Not read 2 Flagged

Questions



Click a number to go to that question.

0 1 2 3 4 5 6 7 8 9

Supported by



Good luck!

Flag  Next 

Question 1 of 30

Drag the labels into the diagram to best match the coastal landforms.

Headland Peninsula Bay

The diagram shows a coastal profile with several features. On the left, there are two small islands in the water, with a label 'Island' pointing to one. To the right, a narrow strip of land connects a larger landmass to the mainland, labeled 'Isthmus'. Further right, a narrow strip of land runs parallel to the coast, labeled 'Barrier Island'. Below the barrier island is a body of water labeled 'Lagoon'. At the bottom of the landmass, a river flows into the sea, labeled 'River mouth'. The land is colored green, and the sea is light blue.

Island

Barrier Island

Isthmus

River mouth

Lagoon

Continental-continental convergence © USGS, Nefronus, Gretarsson; CCD

Flag

Next

Question 2 of 30

Which of these coastal landforms is formed through deposition?

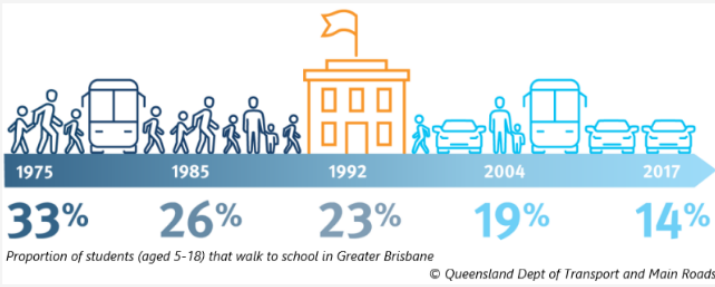
- headland
- river mouth
- barrier island
- bay

Back

Flag

Next

Question 3 of 30

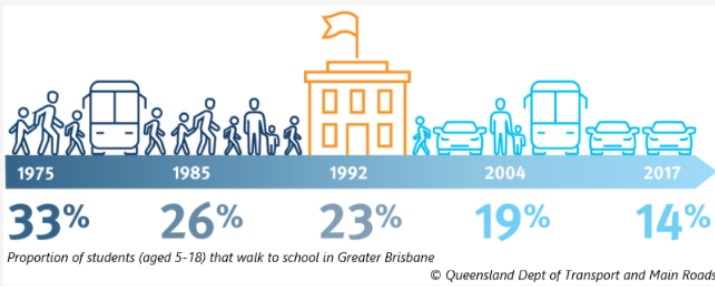


Which of these is a valid reason for the change in students walking to school shown in the infographic?

- urban sprawl
- more bike lanes
- traffic jams
- quieter neighbourhoods

Back Flag Next

Question 4 of 30



Which two of these could lead to an increase in students walking to school?

- more cars per household
- improved pedestrian facilities
- increased population density
- improved public transportation

Back Flag Next

Question 5 of 30

Which three of these hazards are classified as geomorphological?

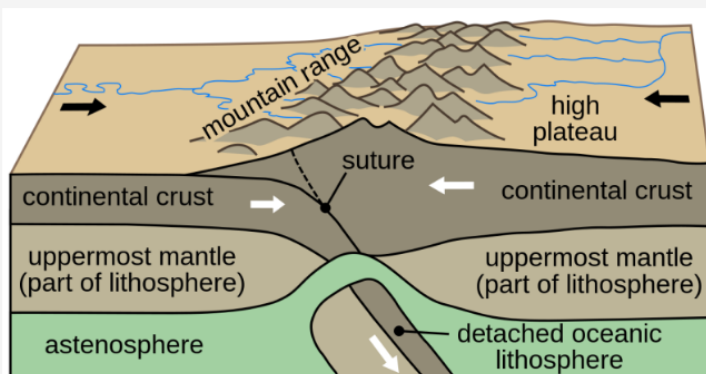
- volcanic eruption
- earthquake
- tsunami
- cyclone

Back

Flag

Next

Question 6 of 30



Continental-continental convergence

© USGS, Nefronus, Gretarsson; CCO

Which type of mountains are being created by the continental-continental plate convergence shown in the diagram?

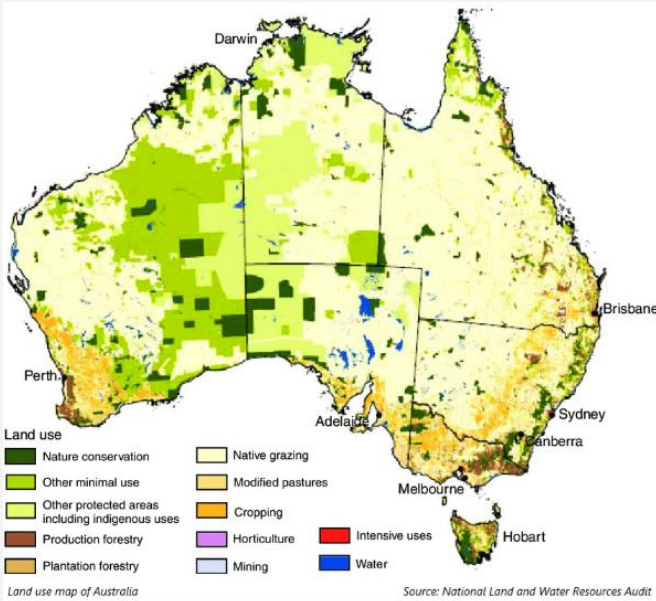
- fold mountains
- plateau mountains
- volcanic mountains
- fault-block mountains

Back

Flag

Next

Question 7 of 30



Complete the sentence by dragging the correct term into the space.

isoline political topographic

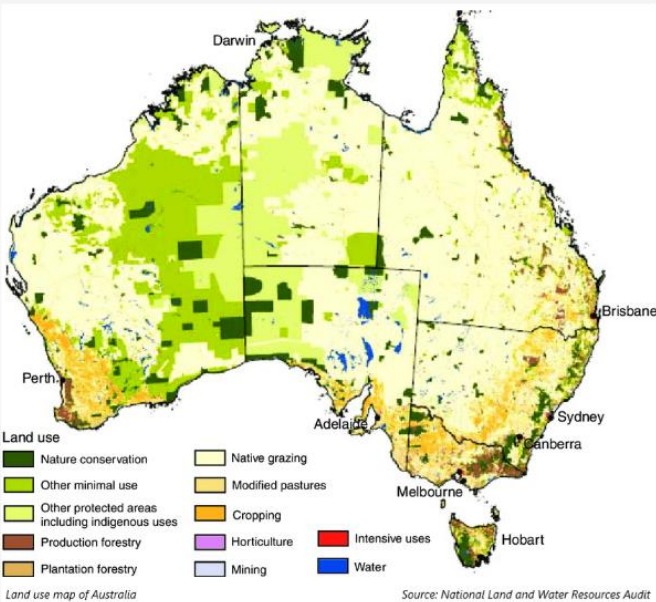
The map on the left is a **thematic** map.

Back

Flag

Next

Question 8 of 30



Using the map, what is the most prevalent land use in Queensland?

- native grazing
- modified pastures
- cropping
- other minimal use


Back

Flag

Next

Question 9 of 30

+
☰



Prescribed burning © 10 Deserts Project; Indigenous Desert Alliance


The Indigenous ranger in the photo is lighting fires to achieve which two outcomes?

- to help control intense fires
- to maintain diverse ecosystems
- to clear land for agriculture
- to release carbon dioxide

◀ Back
Flag
Next ▶

Question 10 of 30

+
☰



How a coral atoll forms © NOAA
(Coral shown in pink and purple)

Based on the animation, drag the steps into the correct order to describe the formation of a coral atoll, with the first step at the top.

Corals begin to settle and grow around a volcanic island.

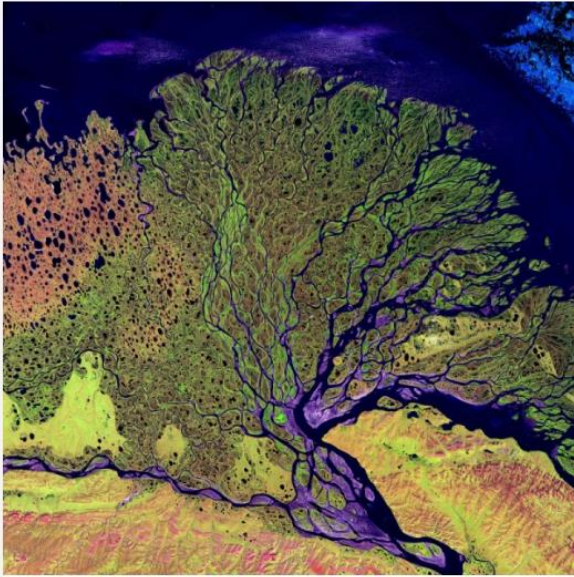
Corals form a fringing reef.

The volcanic island subsides below sea level.

There is a ring of growing coral with a lagoon in its centre.

◀ Back
Flag
Next ▶

Question 11 of 30



Ust Lenskiy Zapovednik, Russia

© NASA

What is the name of the technique used to capture this image?

- field sketching
- remote sensing
- aerial photography
- radar

Back

Flag

Next

Question 12 of 30



Ust Lenskiy Zapovednik, Russia

© NASA

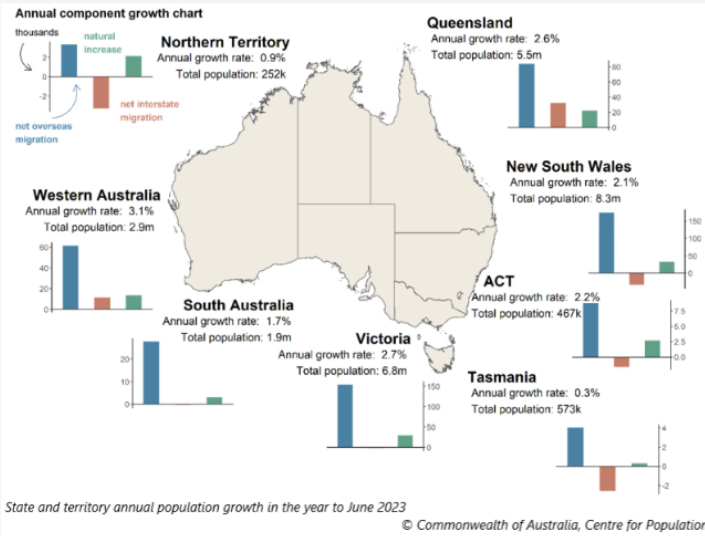
What is the landform shown in green in this image?

- valley
- delta
- river
- ocean

Back

Flag

Next



Using the data in the map, correctly complete the sentence by dragging the names into the spaces.

ACT

New South Wales

Northern Territory

South Australia

Tasmania

Victoria

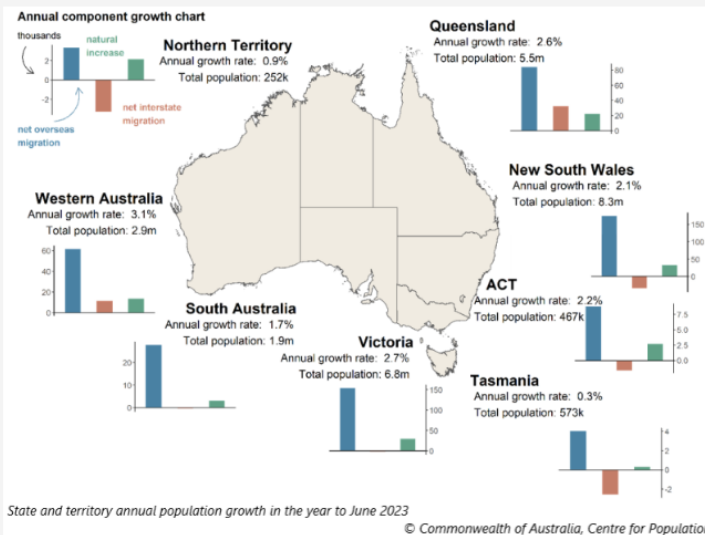
The states and/or territories in which internal migration contributed to population growth are Queensland and

Western Australia

Back

Flag

Next



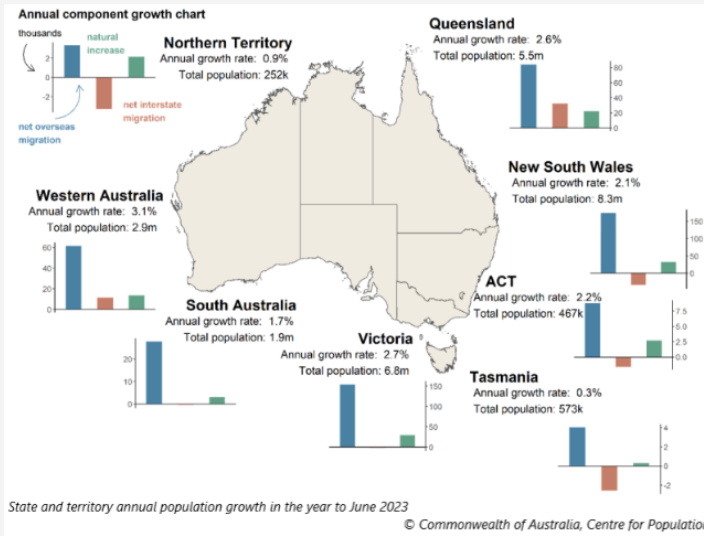
What are two pull factors which might result in the high numbers of interstate migration?

- lower housing prices
- longer commute times
- more favourable climate
- higher population density

Back

Flag

Next



Using the data in the map, which state gained the most residents from natural increase?

- ACT
- Western Australia
- Northern Territory
- New South Wales

Back

Flag

Next



What does 'natural increase' mean with reference to population growth?

- rise in average life expectancy in the population
- the fertility rate of females in the population
- the difference between the number of births and deaths
- total population growth including net migration

Back

Flag

Next

Question 17 of 30

State/Territory	Population at 30 June 2023 ('000)
New South Wales	8,339.3
Victoria	6,812.5
Queensland	5,459.4
South Australia	1,851.7
Western Australia	2,878.6
Tasmania	572.8
Northern Territory	252.5
Australian Capital Territory	466.8
Australia *	26,638.5

* Includes other territories comprising Jervis Bay Territory, Christmas Is., the Cocos (Keeling) Islands and Norfolk Is.

Australia's population, June 2023 Data source: ABS

For this question you may use the on-screen calculator. Click on the icon in the top right corner.

Based on the table, approximately what percentage of Australia's population was living in Western Australia in June 2023?

Round your answer to the nearest whole number and enter in the box.

11

 %

Back

Flag

Next

Question 18 of 30



Based on the map, which statement is correct?

- Most people prefer living in rural areas.
- Australia's population is spread evenly across the country.
- Australia is highly urbanised.
- Australia has a low level of urbanisation.

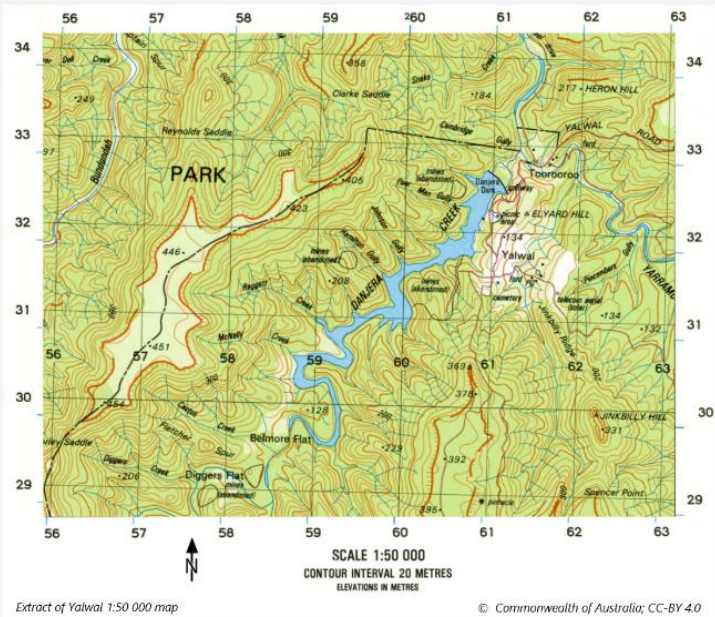
Back

Flag

Next



Question 19 of 30



Using the map, what is the approximate height above sea level of Jinkbilly Hill (AR6229)?

- 310m
- 330m
- 370m
- 390m

Back

Flag

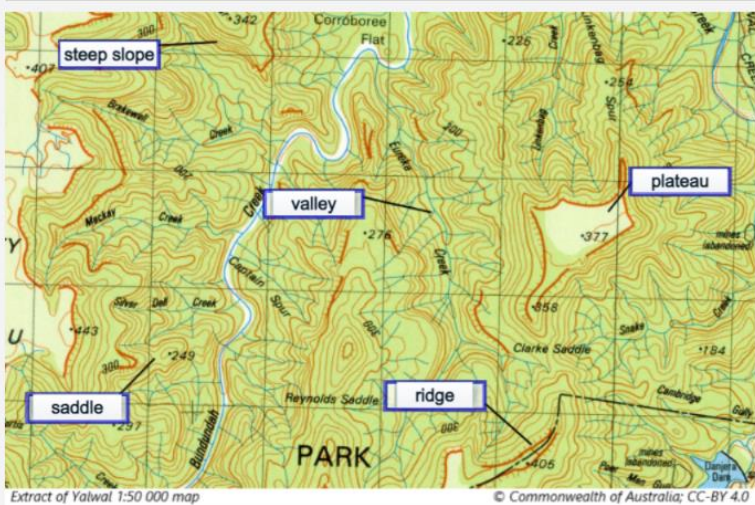
Next



Question 20 of 30



Label the landforms by dragging the correct term onto the map.

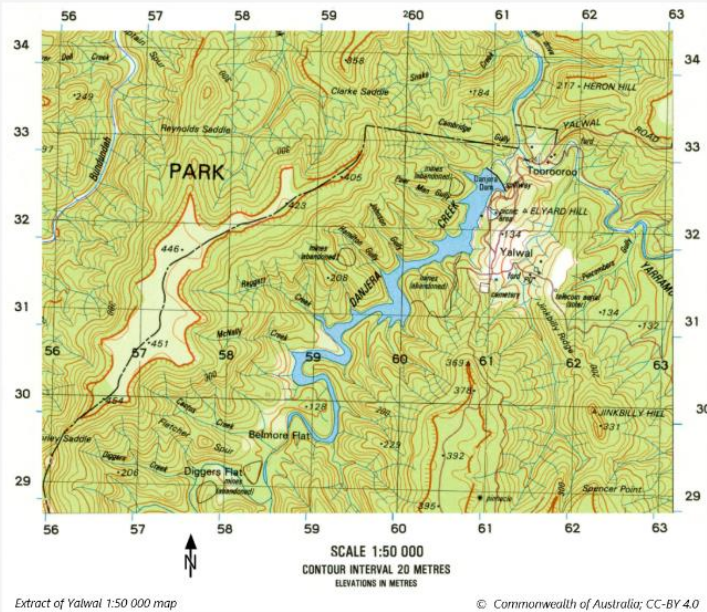


Back

Flag

Next

Question 21 of 30



Based on the map, in which direction does Danjerra Creek flow?

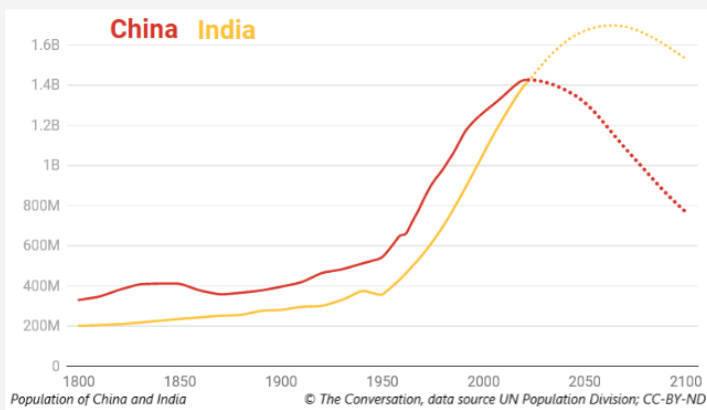
- northeast
- northwest
- southeast
- southwest

Back

Flag

Next

Question 22 of 30



Based on the graph, from which year is India the most populous country? Type the approximate year in the box.

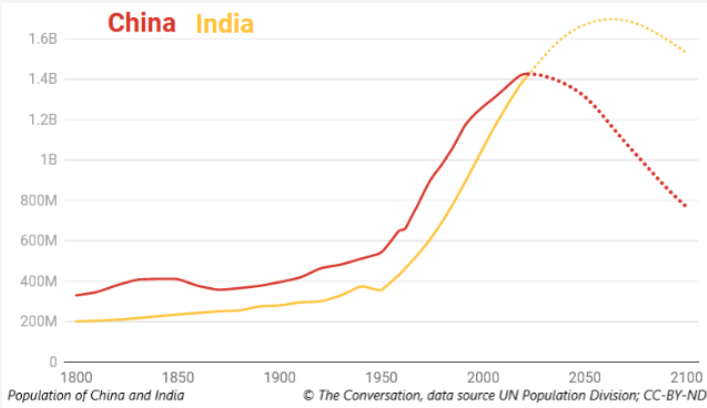
Acceptable answers 2018 – 2028.

Back

Flag

Next

Question 23 of 30



Which two of these accurately describe the population trends shown in the graph?

- China and India have high birth rates and low death rates.
- Both China and India will see a population decline in the future.
- China and India have the largest share of the world's population.
- Both China and India experienced rapid population growth between 1950 and 2000.

Back

Flag

Next

Question 24 of 30

Select the image which best shows a consequence of densely populated urban environments, by dragging the term onto the image.



Tanjung Priok, Indonesia © Hulia; CC-BY-SA 2.5



Phoenix, USA © T Tuson; CC-BY 4.0



Vosges, France © C Amet; CC-BY 3.0



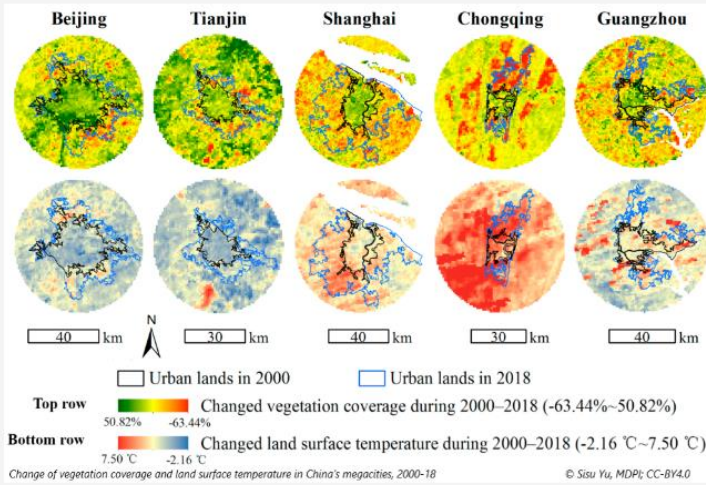
Goa, India © I Keating; CC-BY 2.0

Back

Flag

Next

Question 25 of 30



Which of China's megacities shown in the diagrams had the greatest increase in land surface temperature between 2000 and 2018? Type your answer in the box.

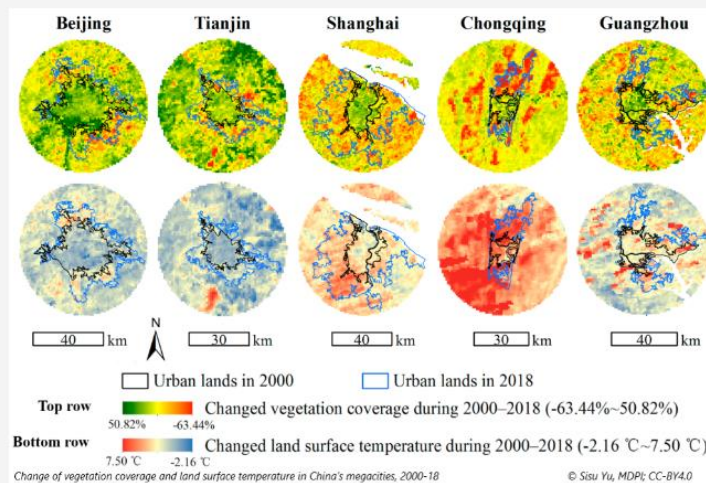
Chongqing

Back

Flag

Next

Question 26 of 30



Which statement is an appropriate description of the relationship shown in the diagrams for Shanghai?

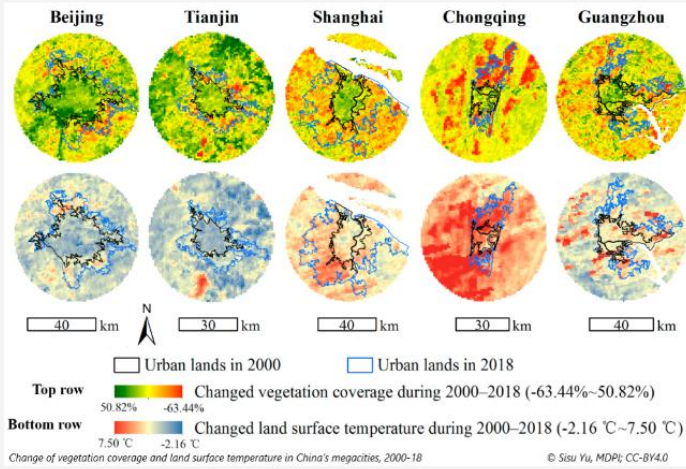
- In the central city, a loss of vegetation corresponded to an increase in temperature.
- An overall loss of vegetation corresponded to an overall increase in temperature.
- An overall increase in vegetation corresponded to an overall decrease in temperature.
- In the urban expansion area, a loss of vegetation corresponded to an increase in temperature.

Back

Flag

Next

Question 27 of 30



In 2018, which Chinese megacity had the largest area of urban land?

- Tianjin
- Beijing
- Guangzhou
- Shanghai

Back

Flag

Next

Question 28 of 30

Drainage division	Mean annual outflow (GL)
Northeast Coast	69 580
Southeast Coast	40 366
Tasmania	45 336
Murray-Darling	5 750
South Australian Gulf	787
Southwest Coast	5 925
Indian Ocean	3 481
Timor Sea	81 461
Gulf of Carpentaria	96 066
Lake Eyre	0
Bulloo-Bancannia	0
Western Plateau	≈ 1

Mean annual outflow to the sea from Australia's drainage divisions
Data source: Western Plateau from WA Water and Rivers Commission; others from Australian National Land and Water Resources Audit



Based on the table and the map, the mean annual outflow is highest from Australia's drainage divisions:

- that are in the tropics
- whose outlets are to the Indian Ocean
- whose outlets are to the Pacific Ocean
- that are in southern Australia

Back

Flag

Next

Question 29 of 30

Drainage division	Mean annual outflow (GL)
Northeast Coast	69 580
Southeast Coast	40 366
Tasmania	45 336
Murray-Darling	5 750
South Australian Gulf	787
Southwest Coast	5 925
Indian Ocean	3 481
Timor Sea	81 461
Gulf of Carpentaria	96 066
Lake Eyre	0
Bulloo-Bancannia	0
Western Plateau	≈ 1

Mean annual outflow to the sea from Australia's drainage divisions
 Data source: Western Plateau from WA Water and Rivers Commission; others from Australian National Land and Water Resources Audit



Australia's drainage divisions © Commonwealth of Australia

Which three of these characteristics of the Murray-Darling drainage division are factors in its low outflow, compared with divisions with high outflows?

- number of dams
- higher irrigation allocations
- larger area
- lower rainfall

Back

Flag

Next

Question 30 of 30

Drag the causes of land degradation into the table against the most appropriate impacts, to make the best matching set.

Cause	Impact
deforestation	desertification
poor irrigation practices	salinisation
excessive use of fertilizers	eutrophication
mining and construction work	erosion

Back

Flag

Next