

This document has been uploaded so that teachers or students can look over the questions that students have answered correctly or incorrectly. They contain none of the interactive elements of the online competition. Some of the wider graphics are missing their edges but the skill/knowledge required by the student to answer the question remains clear.

Question 1

1. Australia has three major landform regions, as shown on the map.

Which landform regions match the descriptions in the table?

Eastern Uplands

Interior Lowlands

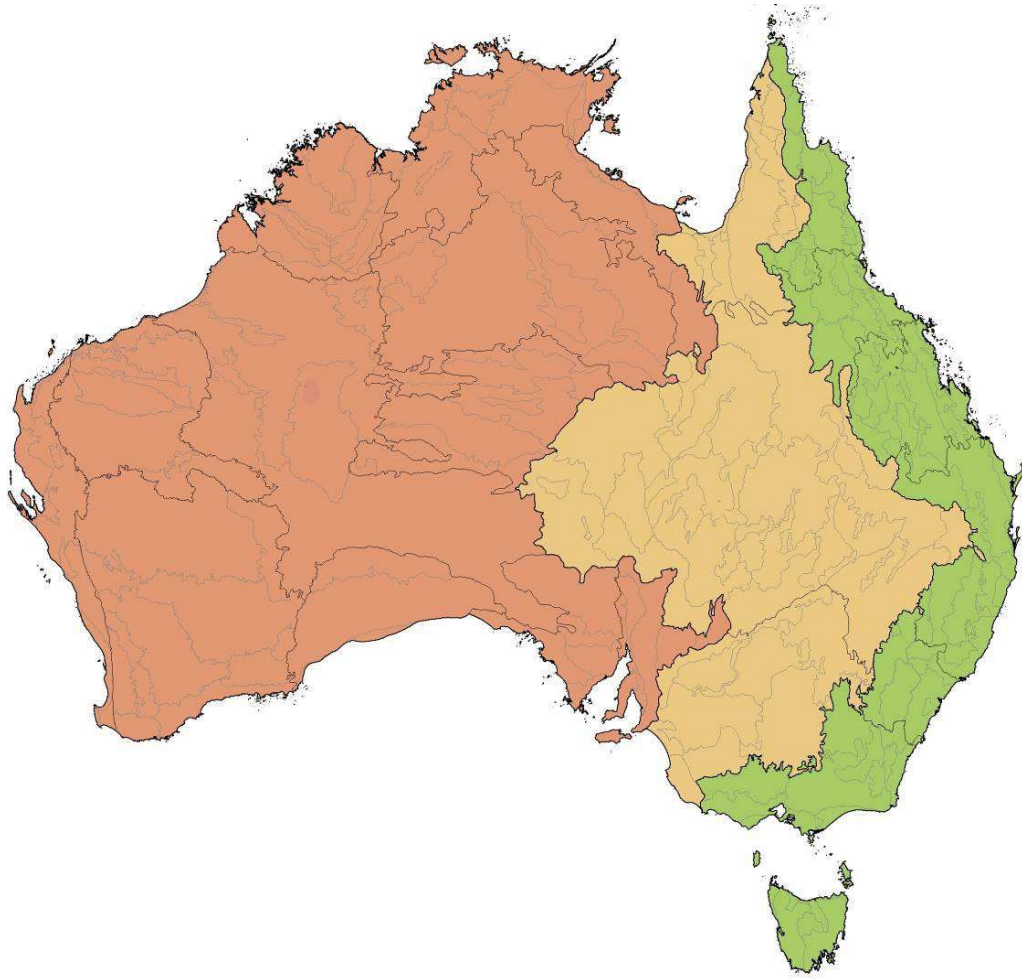
Western Plateau

Landform region	Description
Interior Lowlands	a large area of very flat, low-lying plains
Eastern Uplands	a series of high plateaus with a steep escarpment on the coastal side and a gentler slope inland
Western Plateau	a vast area of relatively flat tablelands including stony and sandy deserts

The map is on the next page in this pdf.

Landform regions of Australia

© Australian Collaborative Land Evaluation Program



Question 2

2. Which type of landform is depicted inside the black circle on the map?

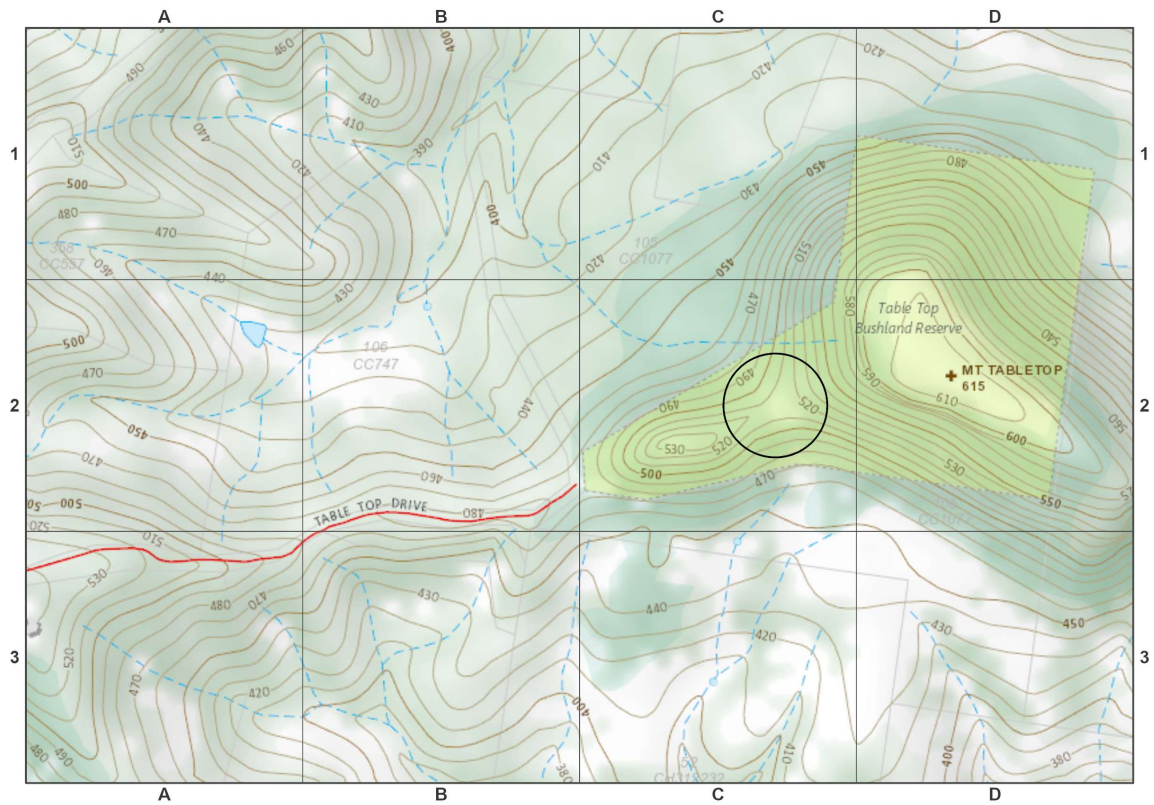
Choose the answer from the drop-down menu.

The landform shown inside the black circle is a .

- cliff
- saddle
- valley
- spur

Mount Tabletop map extract

© State of Queensland, Department of Resources



Question 3

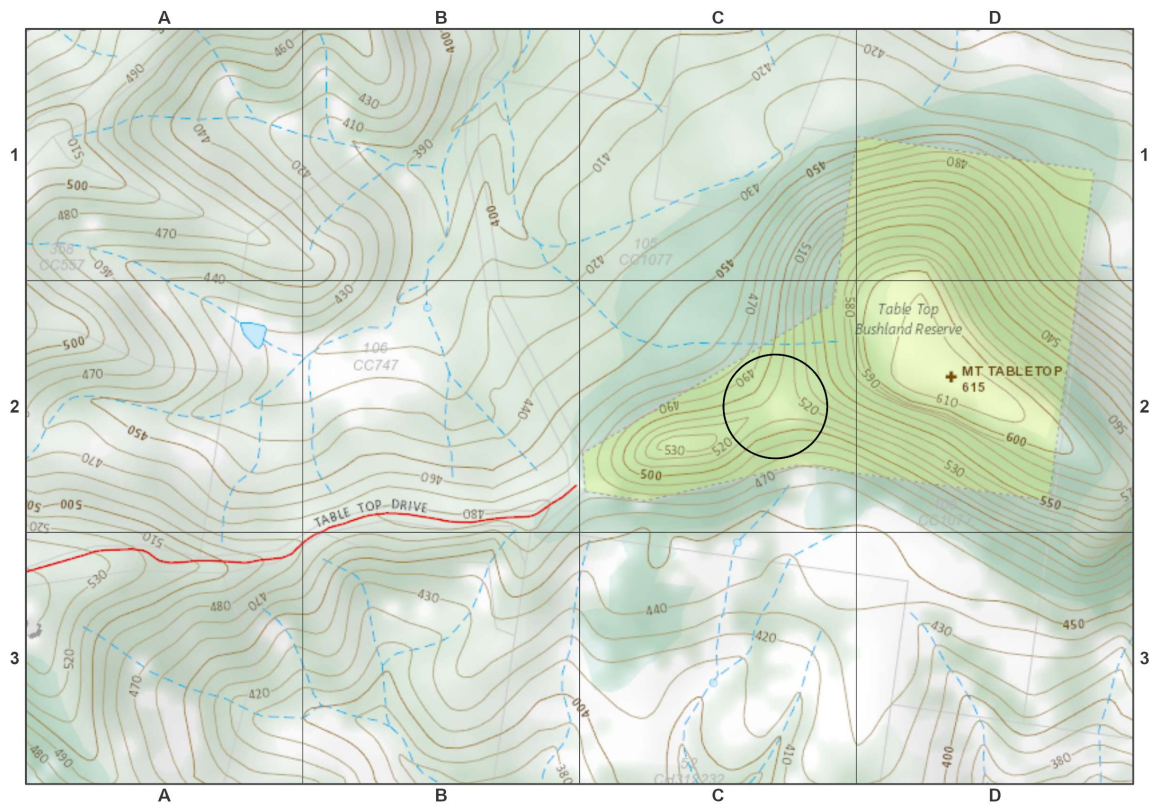
3. What is the height of the highest point on the map?

Enter the number in the box.

615 m

Mount Tabletop map extract

© State of Queensland, Department of Resources



Question 4

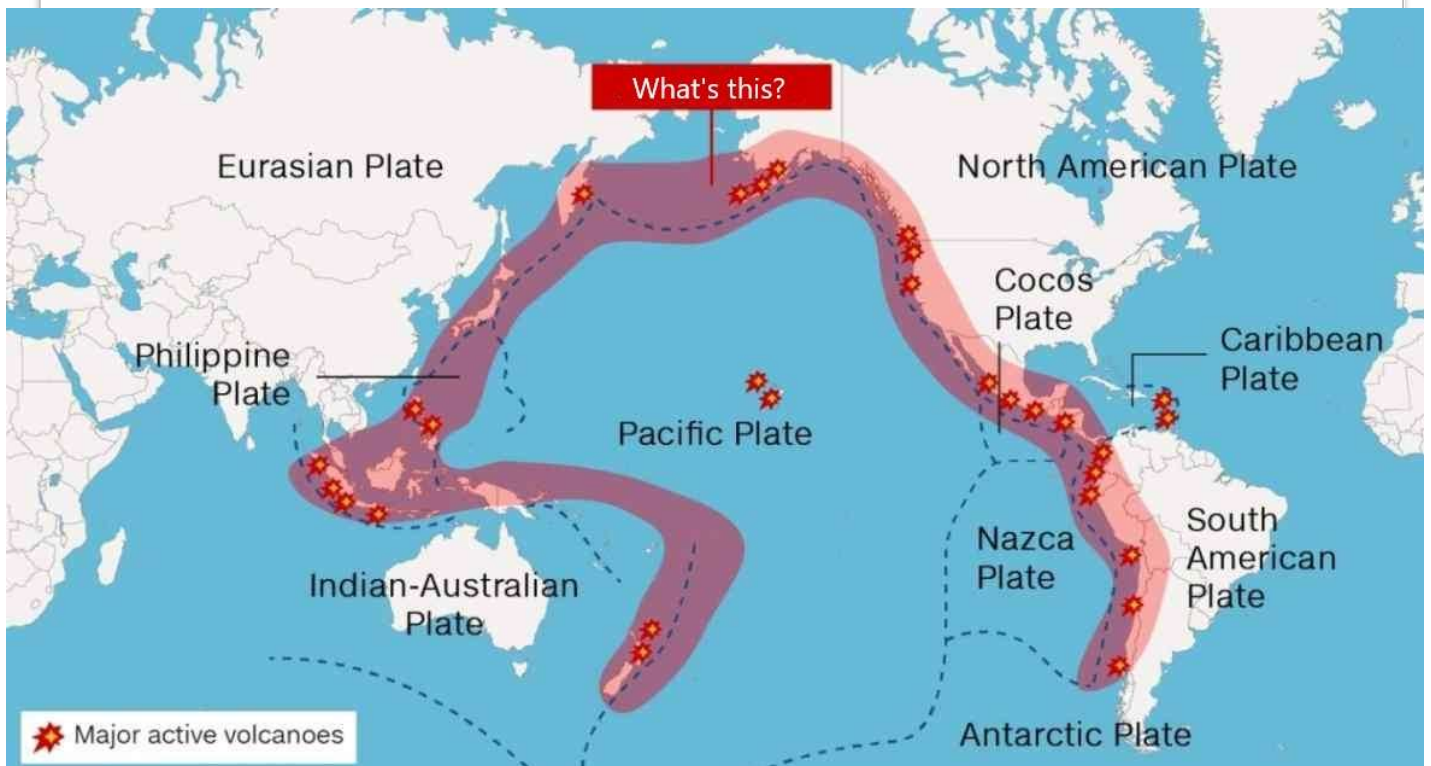
4. What is the name given to the area of high seismic activity (volcanic eruptions and earthquakes), shaded pink on the map?

Choose the answers from the drop-down menus.

The area is commonly called the Ring of .

Map showing area of high seismic activity

© U.S. Geological Survey



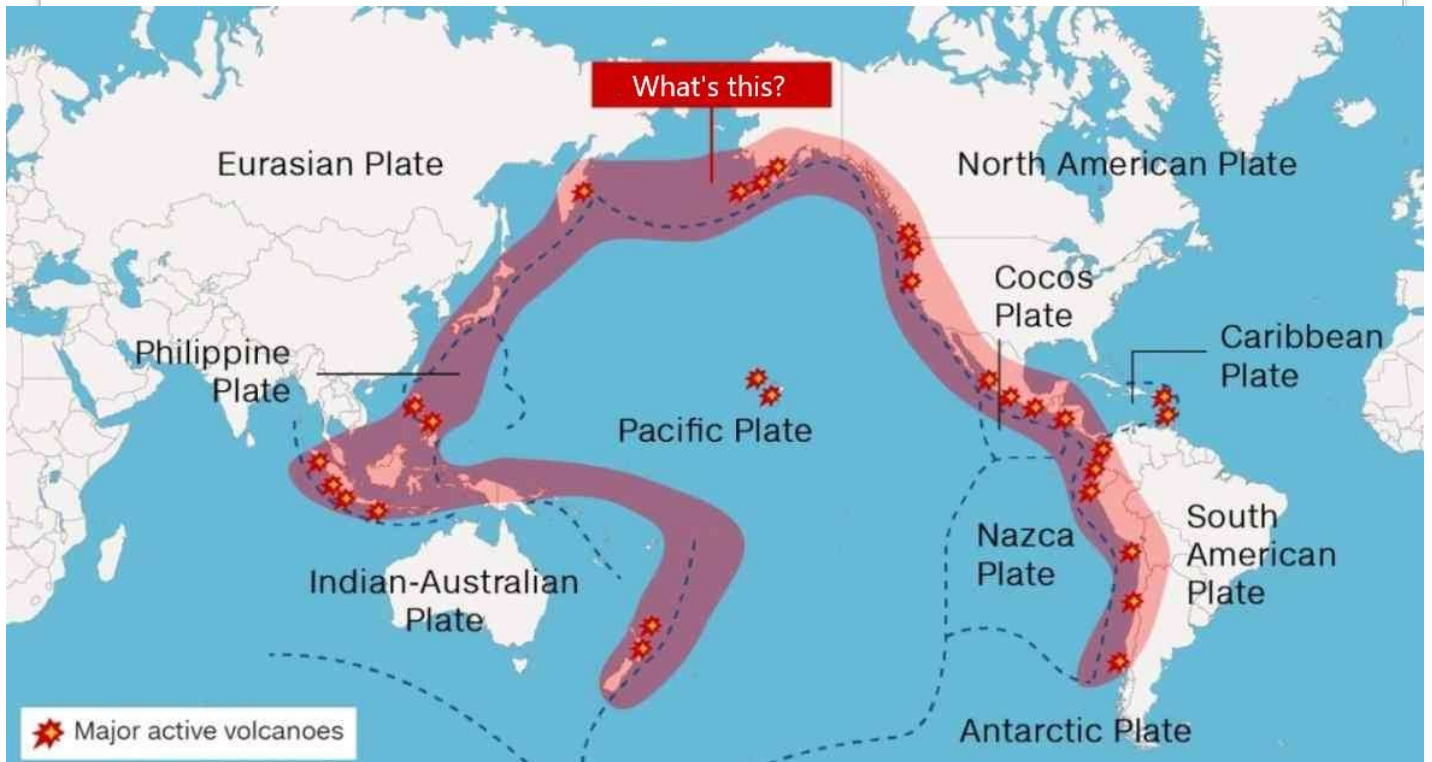
Question 5

5. What is the main cause of the phenomenon highlighted on the map?

- plate divergence 1
- volcanoes 2
- hot spots 3
- plate convergence 4

Map showing area of high seismic activity

© U.S. Geological Survey



Question 6

6. Which of these form part of government countermeasures to reduce the death toll in the event of a Tokyo earthquake?

Select ALL correct options

- strategies to tackle business continuity 1
- upgrading the seismic resistance of buildings 2
- increasing the number of buildings with fire proofing in densely populated areas 3
- support for voluntary disaster management organisations 4

Question 7

7. Which of these factors contributed to the population distribution shown in the map?

Select ALL correct options

proximity to job opportunities 1

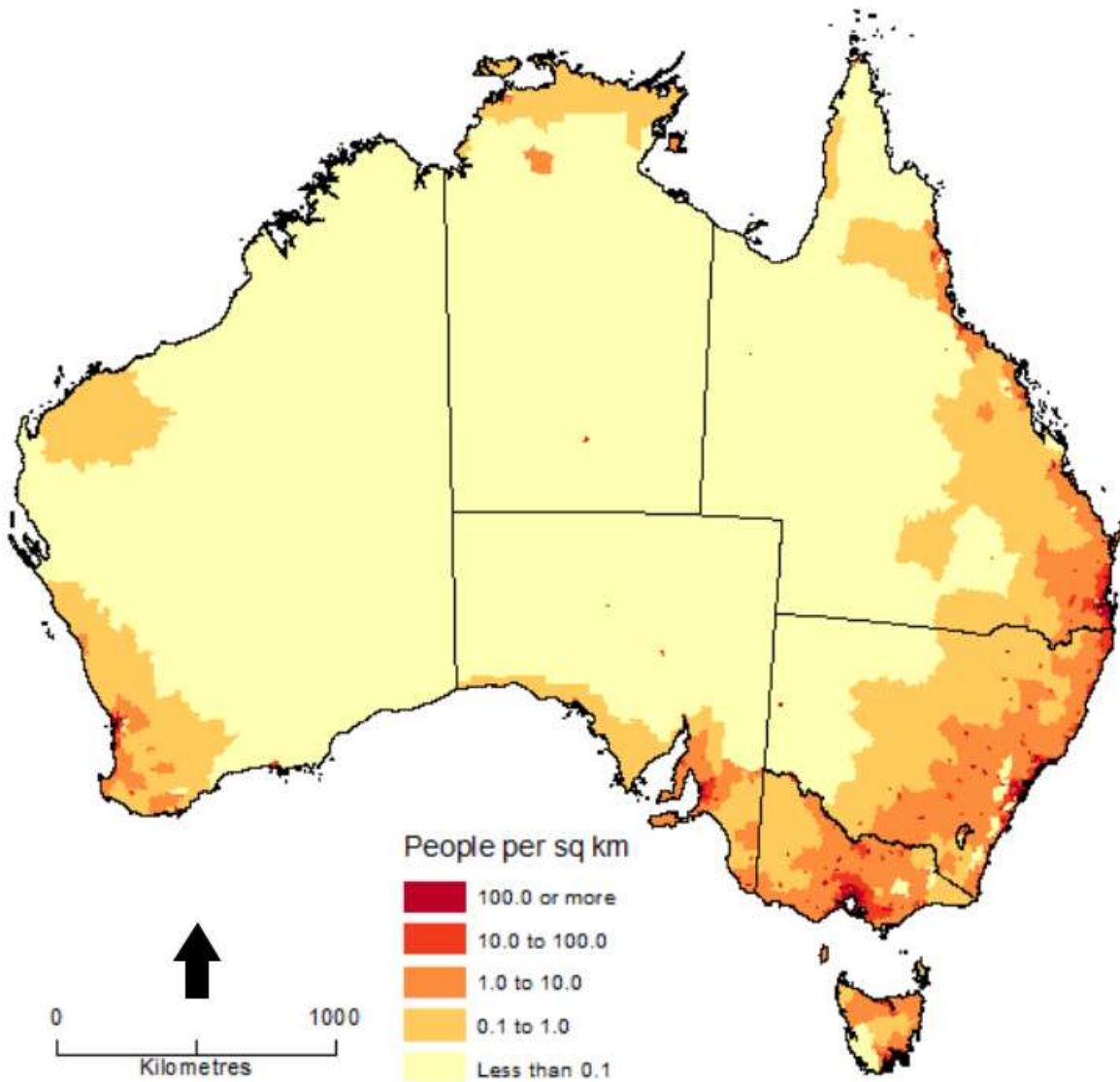
more temperate climate 2

availability of space to expand 3

availability of water resources 4

Population density, Australia, June 2018

© Commonwealth of Australia, Australian Bureau of Statistics



Question 8

8. Classify the liveability factors below as to whether they can easily be measured quantitatively (in numbers) or are usually measured qualitatively (in words).

Choose the answers from the drop-down menus.

Liveability factor	Measurement
feelings of community connection	qualitative ▾
environmental quality	quantitative ▾
infrastructure	quantitative ▾
traditional and spiritual associations	qualitative ▾
climate	quantitative ▾

Question 9

[Animation file loaded separately – see Sydney_Landsat.gif](#)

9. Which phenomenon is illustrated in the satellite image animation of western Sydney?

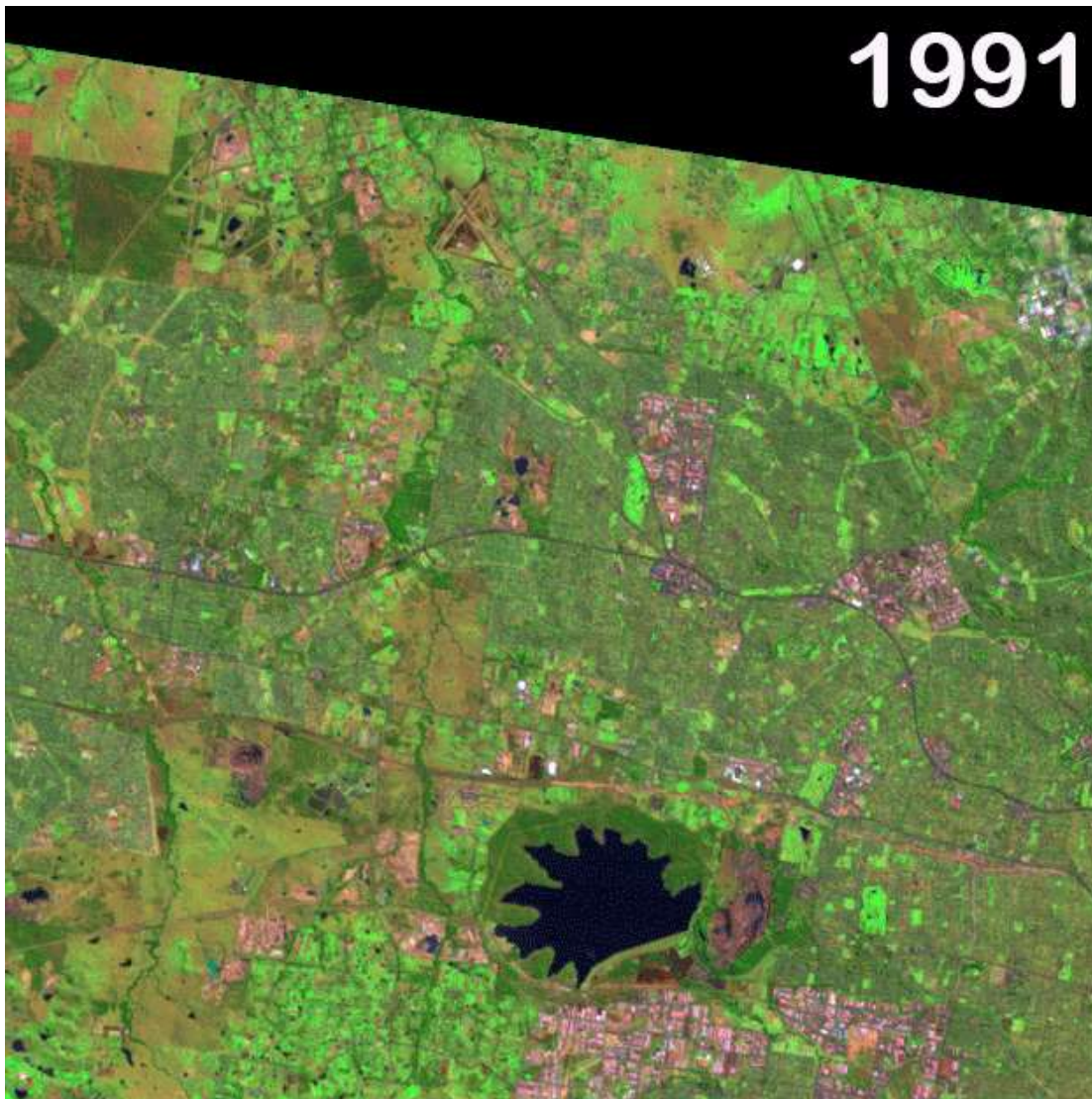
Choose the answer from the drop-down menu.

- edge expansion
- rural-urban migration
- tree change
- urban sprawl

The animation represents

Western Sydney, 1991, 2002, 2019

Source images © U.S. Geological Survey



Question 10 [Animation file loaded separately – see Sydney_Landsat.gif](#)

10. Which is the most sustainable and efficient transport strategy to address impacts arising from the changes seen in the animation?

public transport

1

private cars

2

ride-share service

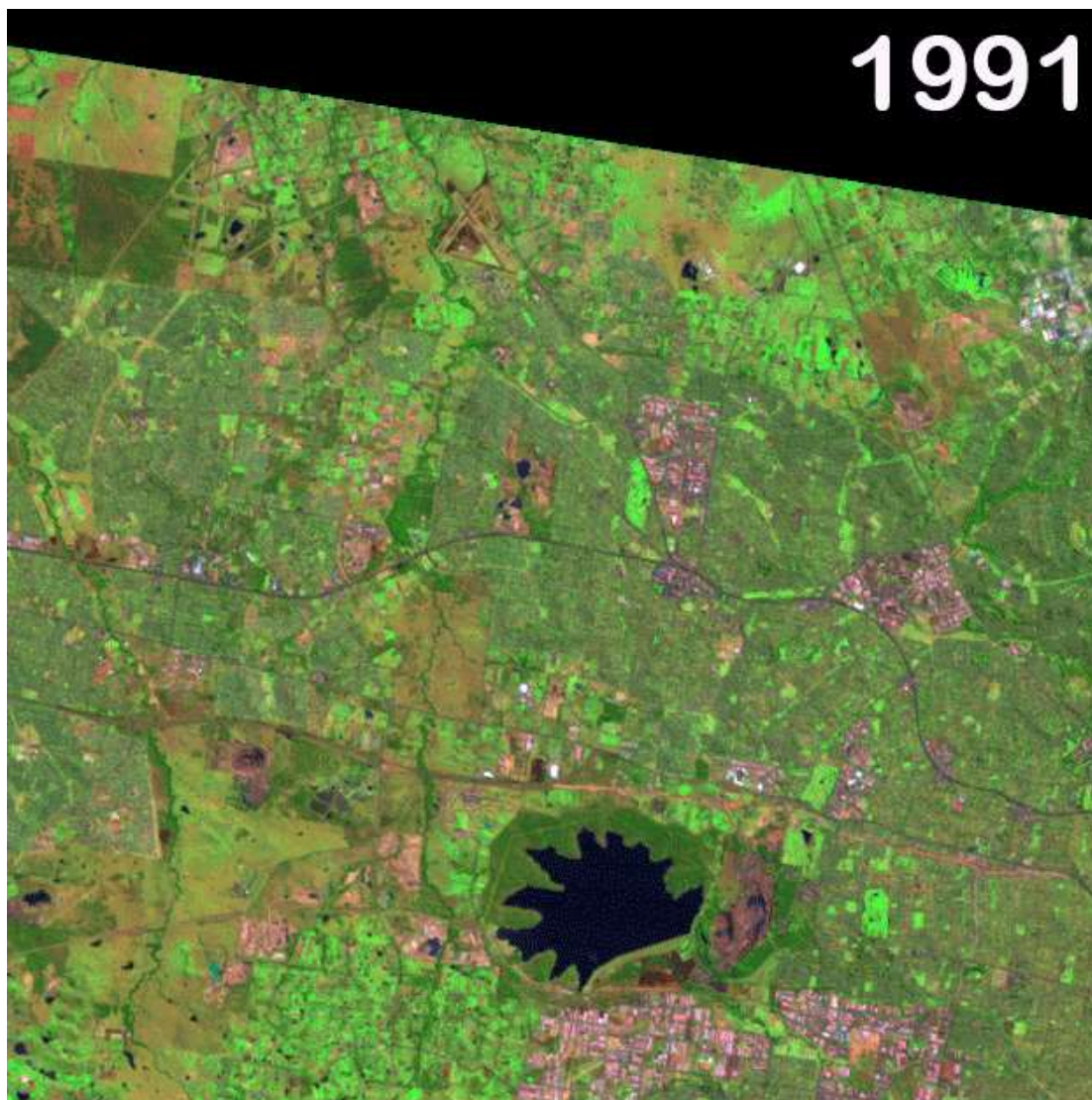
3

walking

4

Western Sydney, 1991, 2002, 2019

Source images © U.S. Geological Survey



Question 11

11. What is the most likely reason for the migration flow in the 20-24 years age group, as seen in the graph?

People moving to the City of Sydney have many dependants aged 20-24.

1

The City of Sydney is a well-known tourist destination.

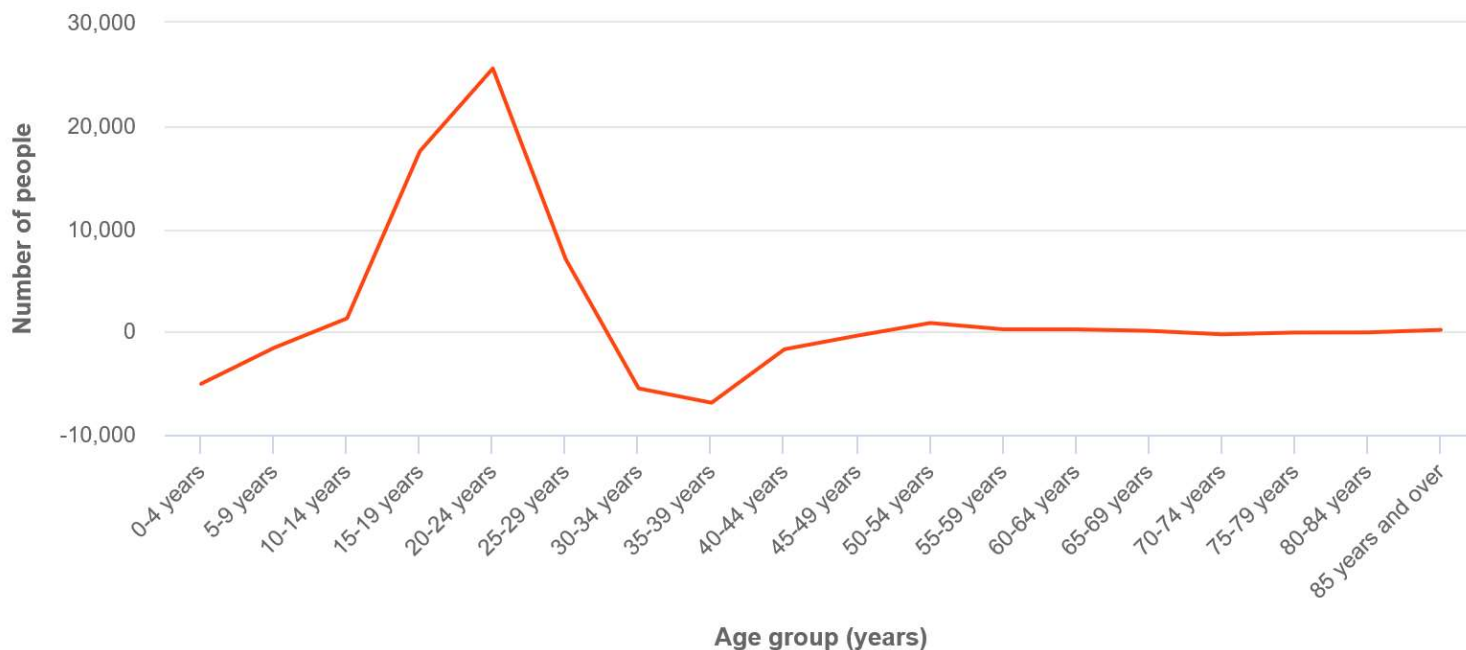
Students are moving to the City of Sydney to be close to its two universities.

3

The City of Sydney has high quality health facilities.

Net migration by age group, City of Sydney, 2016-2021

© .id (informed decisions)



Question 12

12. What is the most likely reason for the migration flow of people in their 30s and 40s, as seen in the graph?

Many people leave the City of Sydney after completing University. 1

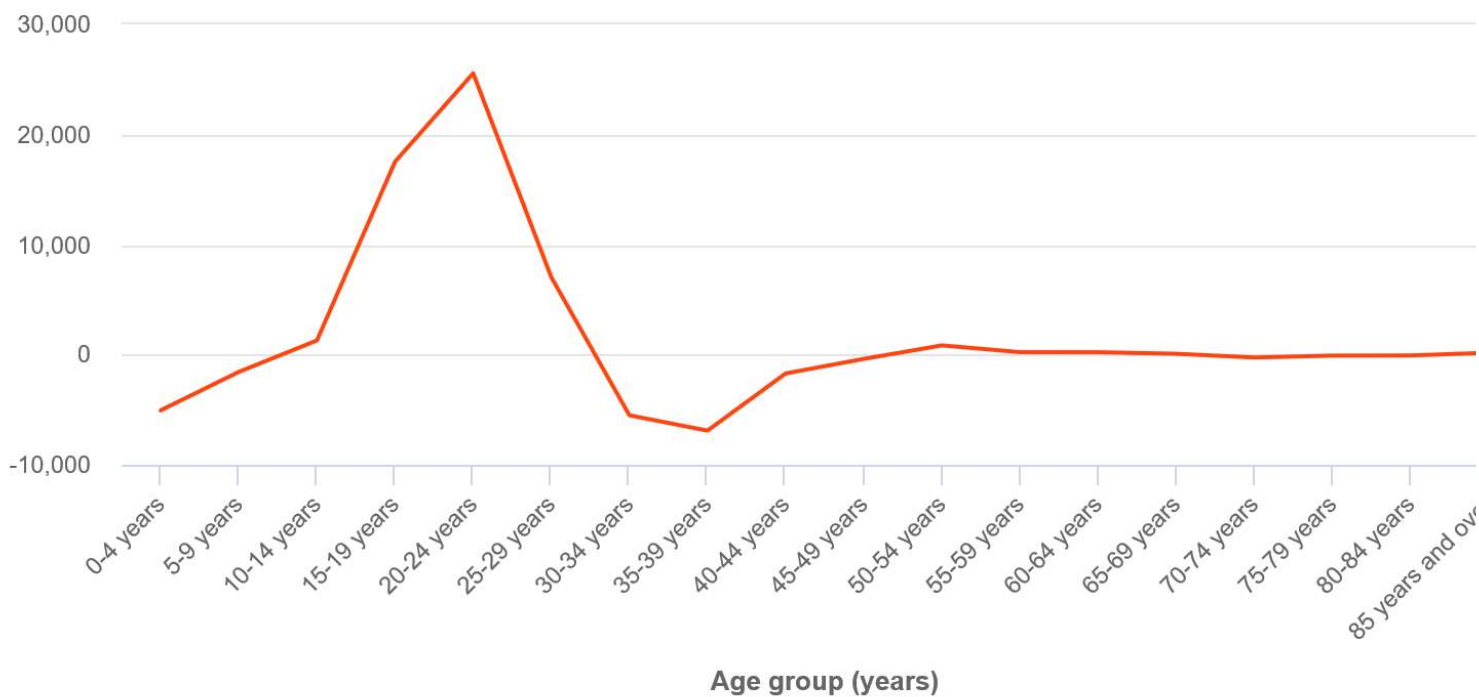
People that age are likely to be settled in their permanent careers. 2

The City of Sydney is not a popular tourist destination for that age group. 3

Young families seek housing opportunities elsewhere. 4

migration by age group, City of Sydney, 2016-2021

© .id (informed decis



Question 13

13. Which term is used to describe an urban area comprising a number of towns and cities that have grown and merged into one continuous urban area?

gentrification 1

megacity 2

concentration 3

conurbation 4

Question 14

14. How much rain did Kalgoorlie (WNW of Perth) receive in the month presented in the map?

31 mm 1

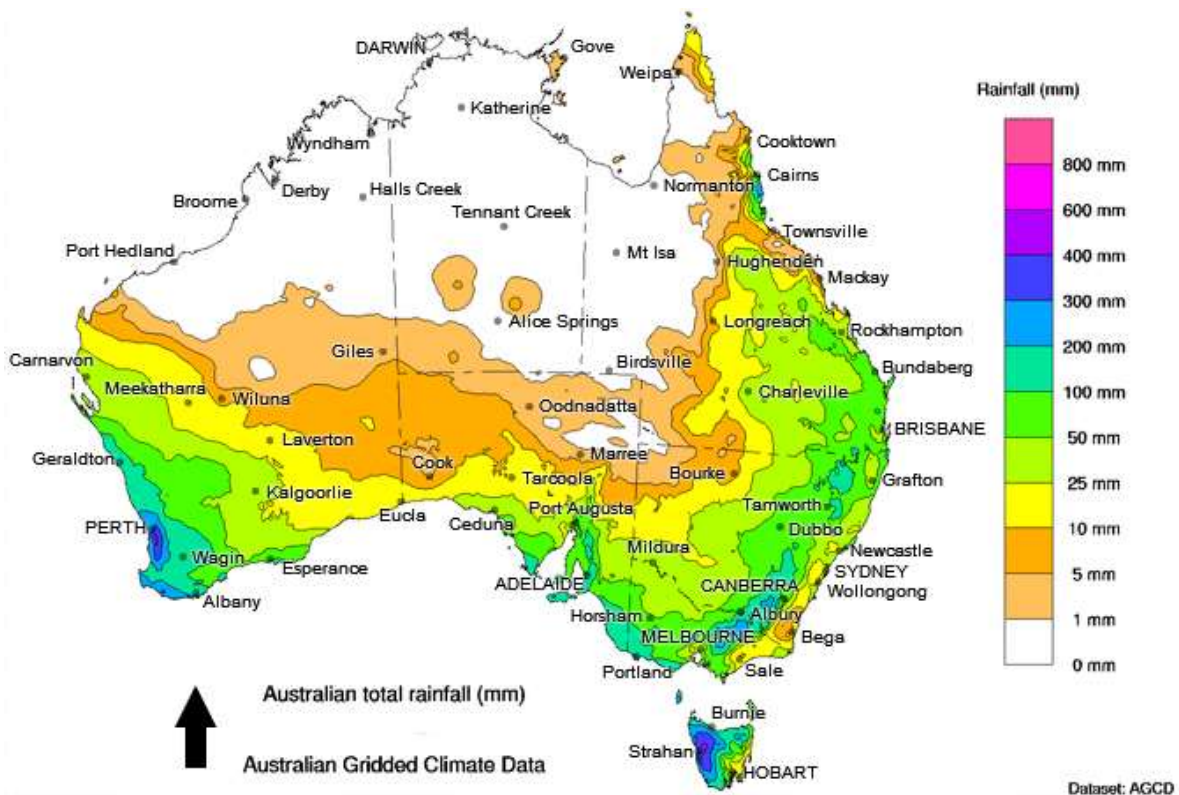
65 mm 2

127 mm 3

209 mm 4

Australian total rainfall for selected month in 2021

© Commonwealth of Australia, Bureau of Meteorology



Question 15

15. Given the pattern of rainfall, from which season is the data in the map?

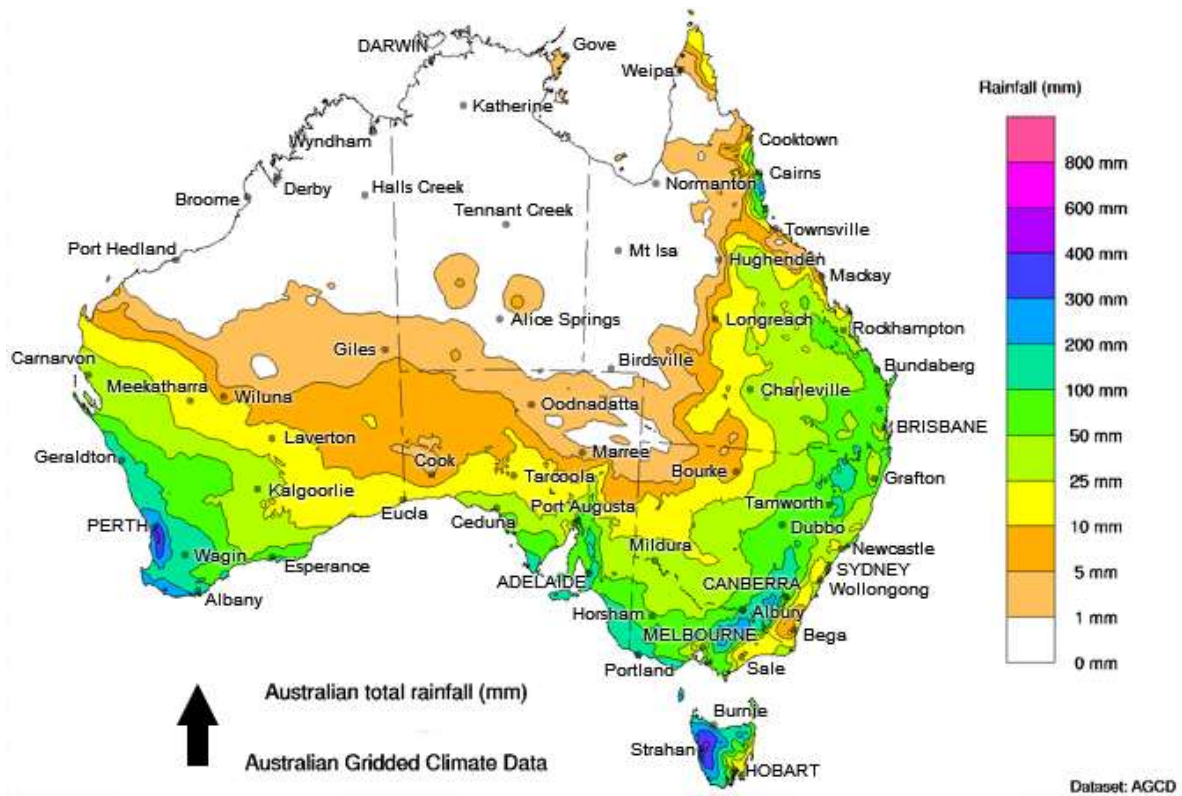
Drag and drop the answer.

autumn spring winter summer

The map is for a month in **winter**.

Australian total rainfall for selected month in 2021

© Commonwealth of Australia, Bureau of Meteorology



Question 16

16. Using the data in the table, how much rain does Tunis receive in winter on average?

Enter the number in the box. You may use a calculator.

183 mm

Climate data, Tunis, Tunisia

Source: World Meteorological Organization

Month	Jan	Feb	Mar	Apr	May	Jun	Jul	Aug	Sep	Oct	Nov	Dec
Average temp. °C	11.5	12.0	13.2	15.6	19.3	23.2	26.3	26.8	24.4	20.4	15.9	12.5
Average rainfall mm	59	57	47	38	23	10	3	7	32	65	56	67

Question 17

17. Based on the data in the table, which type of climate does Tunis have?

 continental

1

 arid

2

 Mediterranean

3

 tropical

4

Climate data, Tunis, Tunisia

Source: World Meteorological Organization

Month	Jan	Feb	Mar	Apr	May	Jun	Jul	Aug	Sep	Oct	Nov	Dec
Average emp. °C	11.5	12.0	13.2	15.6	19.3	23.2	26.3	26.8	24.4	20.4	15.9	12.5
Average rainfall mm	59	57	47	38	23	10	3	7	32	65	56	67

Question 18

18. What are the steps in the formation of a rain shadow? Number the events in the table in the correct sequence.

Enter the numbers in the boxes.

Order	Rain shadow formation steps
<input type="text" value="3"/>	On the far side of the mountain range, the air has lost most of its moisture and warms as it descends.
<input type="text" value="2"/>	The moist air cools as it rises, condensing and producing rain.
<input type="text" value="4"/>	This warmer, drier air means rain is less likely on the far side of the mountain range.
<input type="text" value="1"/>	Moist prevailing winds blowing in from the ocean rise up when they are blocked by a mountain range.

Question 19

19. Which of these is the definition of water scarcity?

- a finite amount of water; once used it cannot be used again 1
- one of the resources provided by nature 2
- not enough water to meet standard demands 3
- areas with low rainfall 4

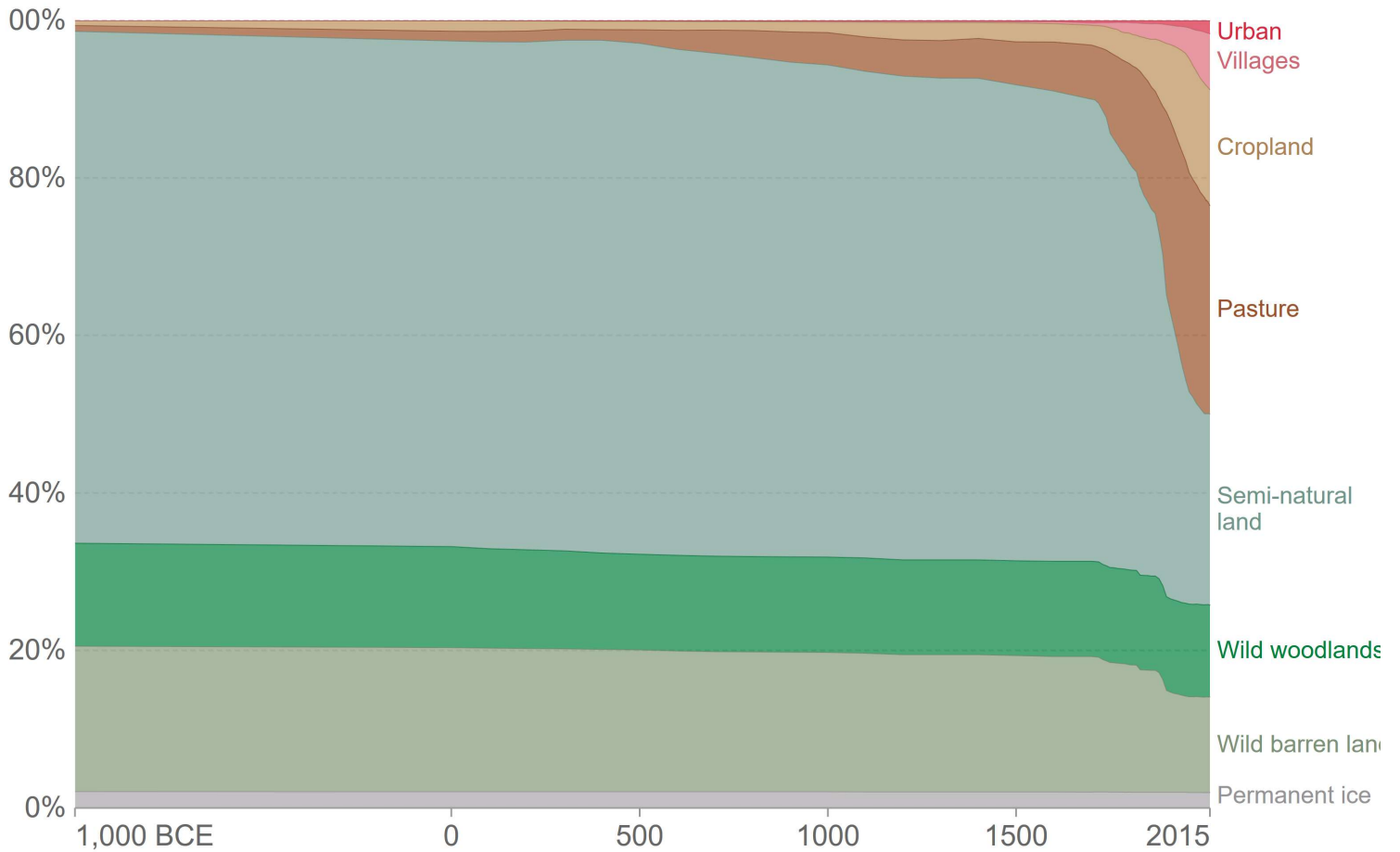
Question 20

20. Using the graph, which of these land uses has shown the least change since 1,000 BCE?

- wild barren land 1
- cropland 2
- urban 3
- permanent ice 4

Global land use since 1,000 BCE

© Our World in Data, (



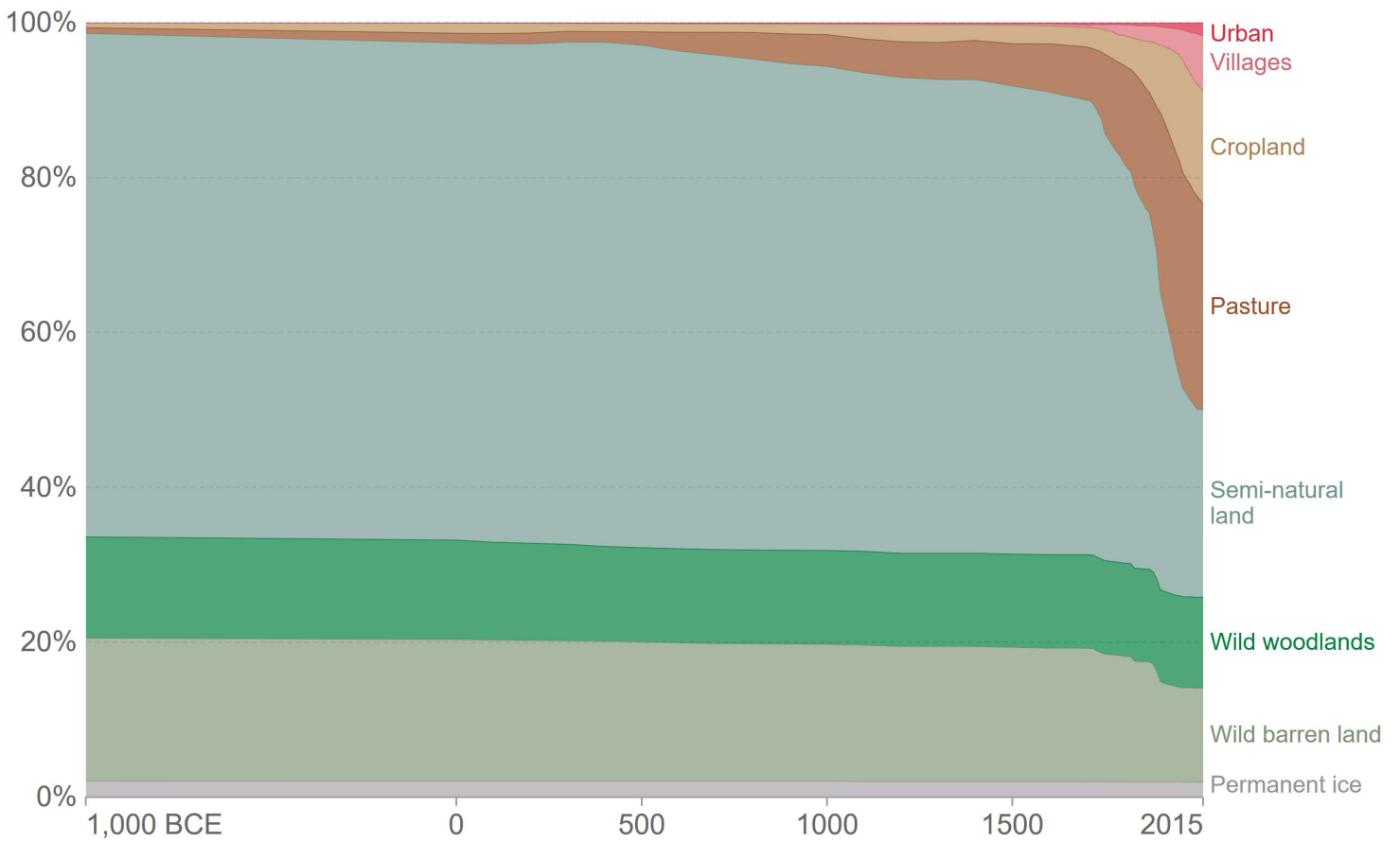
Question 21

21. Using the graph, approximately what percentage of land use was dedicated to agricultural practices in 2015?

- 15% 1
- 24% 2
- 42% 3
- 91% 4

Global land use since 1,000 BCE

© Our World in Data, CC BY



Question 22

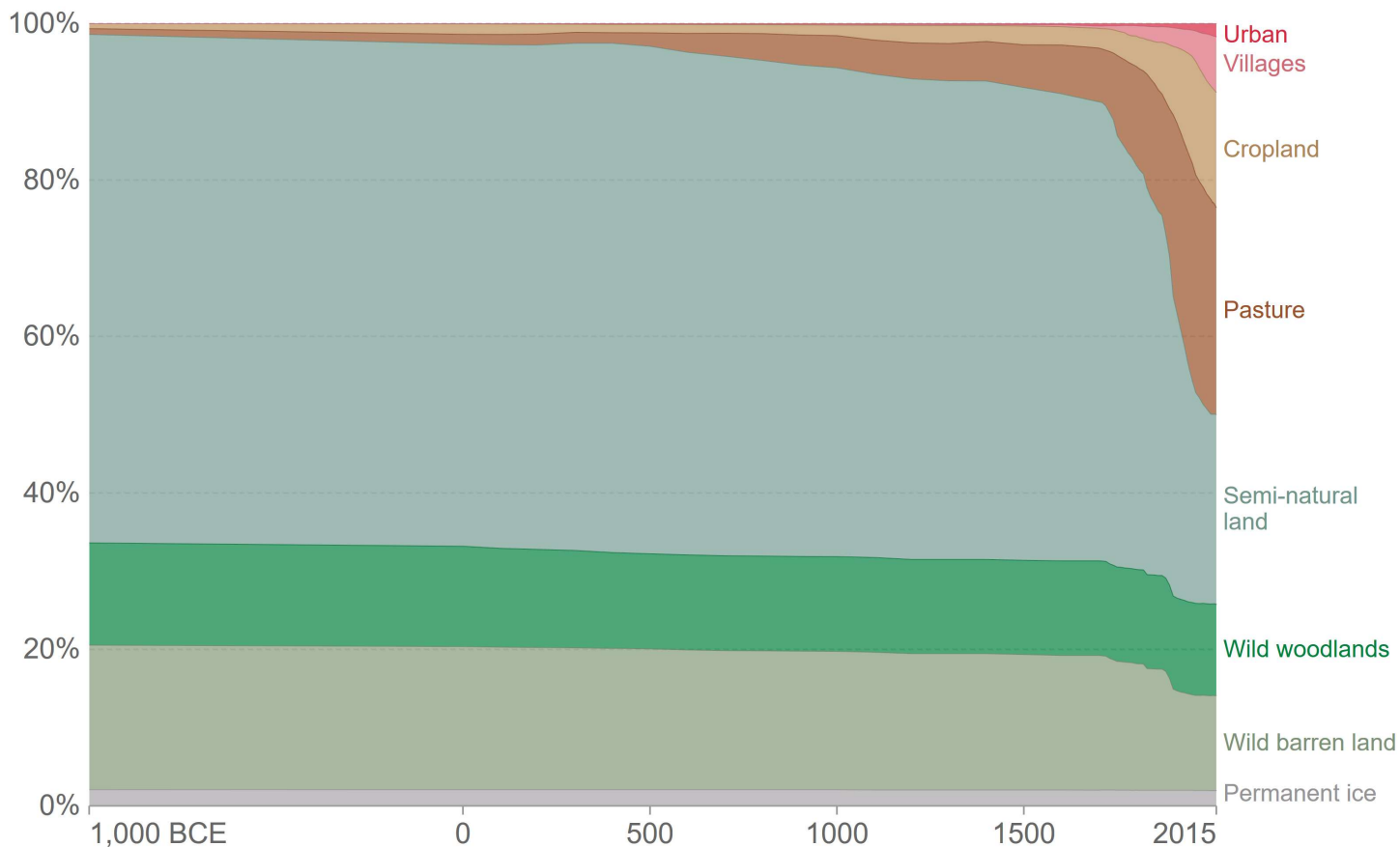
22. Which of these is the best conclusion from the data provided in the graph?

The expansion of agriculture in the last 250 years:

- has led to the expansion of villages at the expense of urban areas 1
- has led to the loss of permanent ice due to climate change 2
- has led to the loss of semi natural land 3
- means that it now takes up more than half of all land use 4

Global land use since 1,000 BCE

© Our World in Data, CC BY



Question 23

23. What has been the main reason for the rapidly changing land use patterns over the last 250 years, as shown in the graph?

industrialisation of agriculture 1

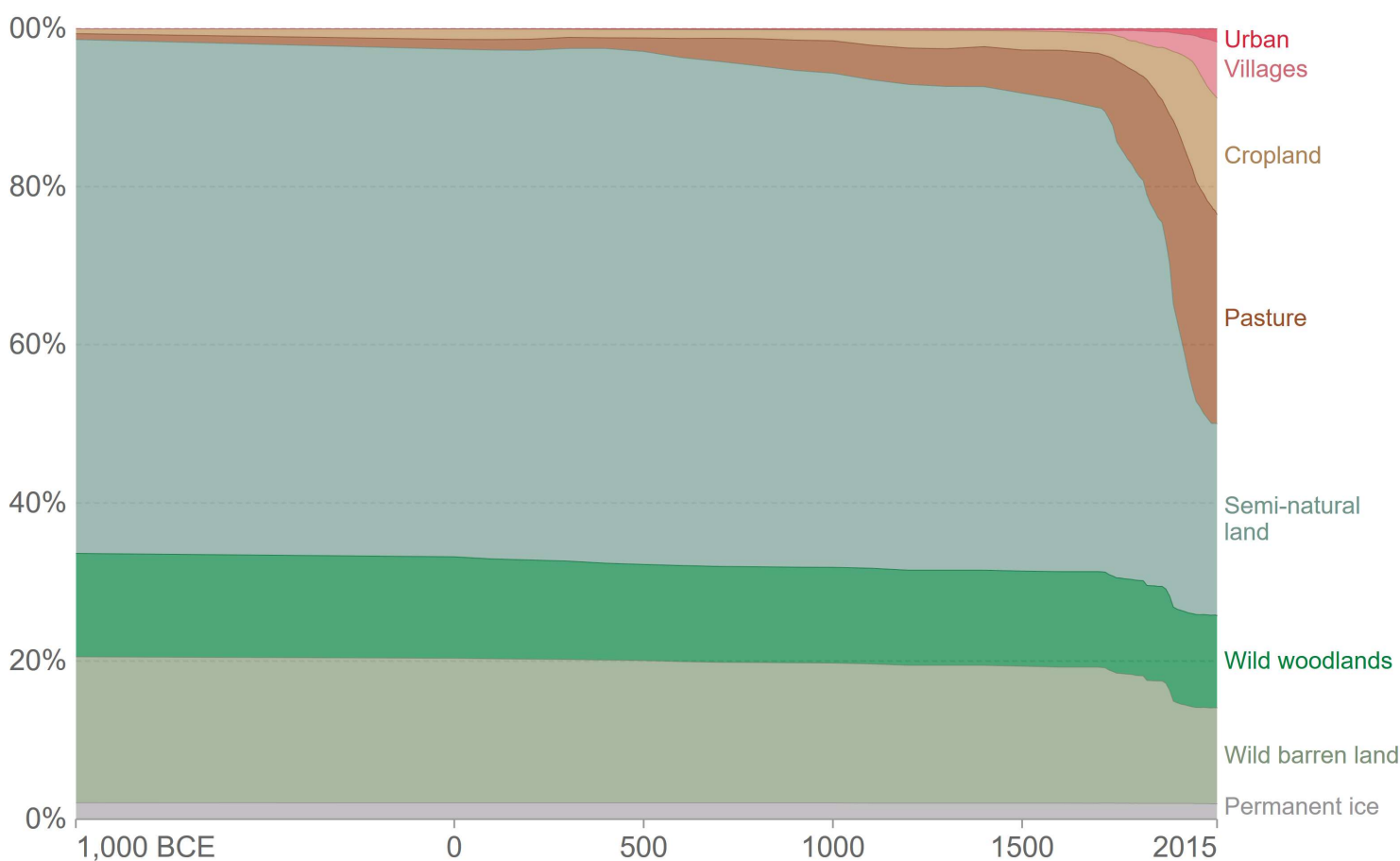
large increase in the world's population 2

large increase in urbanisation 3

increasing affluence of the world's population 4

Global land use since 1,000 BCE

© Our World in Data, CC



Question 24

24. Anthropogenic biomes can best be described as biomes that:

- are a type of ecosystem where organisms interact with each other 1
- have been greatly influenced by climate 2
- are the result of sustained direct human interactions with ecosystems 3
- are where humans have lived for thousands of years 4

Question 25

25. Which biome has been cleared in the area shown in the photo?

deciduous forest 1

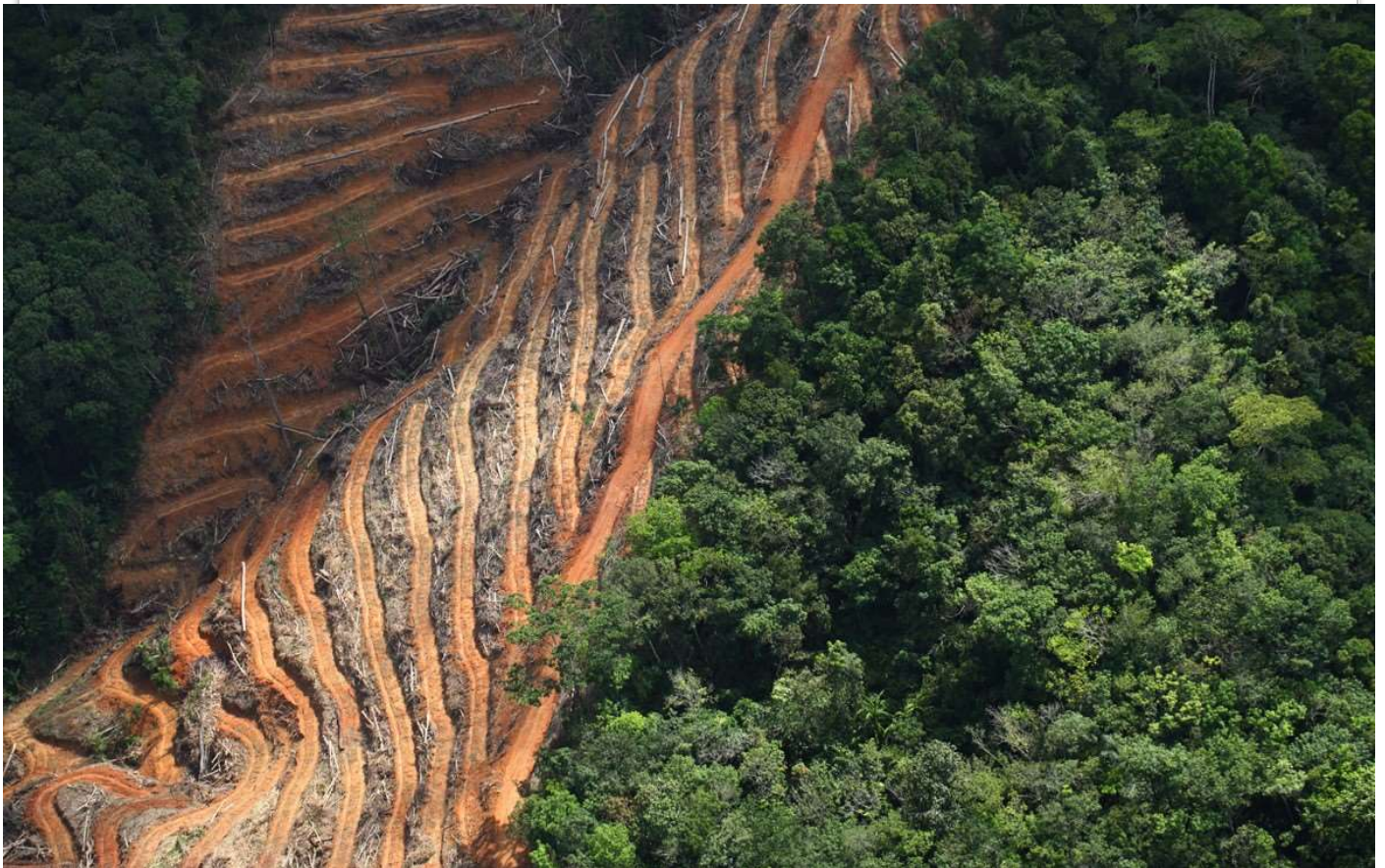
shrubland 2

coniferous forest 3

rainforest 4

Land clearing for oil palm plantation, Sabah, Malaysia

© Mongabay.com



Question 26

26. An oil palm plantation is an example of:

- horticulture 1
- subsistence farming 2
- crop rotation 3
- a cash crop 4

Question 27

27. Which of these environmental problems was most likely to have been caused by the clearing shown in the image?

acid rain

1

desertification of surrounding land

2

siltation of waterways

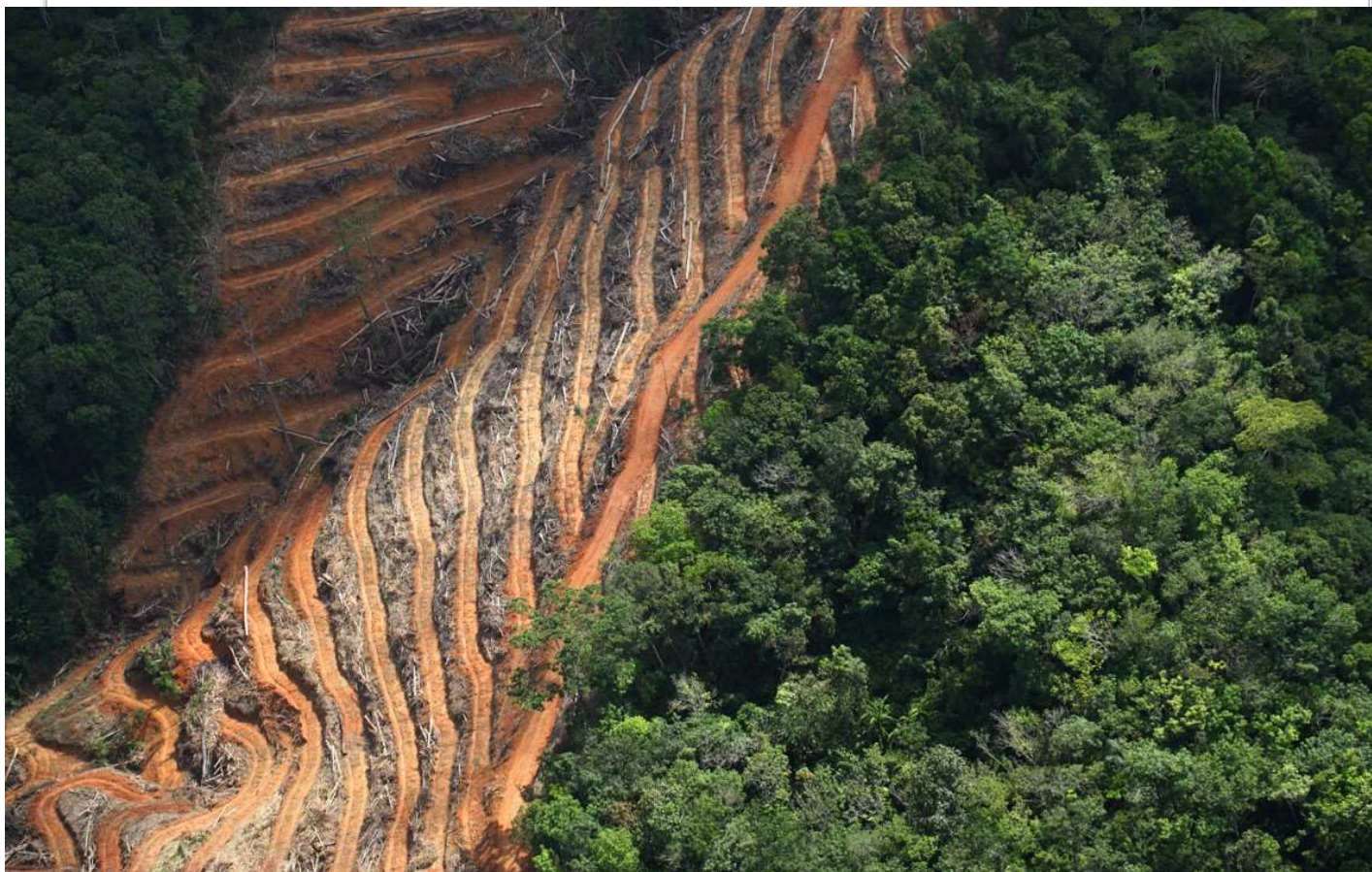
3

salinisation

4

Land clearing for oil palm plantation, Sabah, Malaysia

© Mongabay.com



Question 28

28. Which of these geographical concepts is best illustrated in the photo?

space 1

scale 2

change 3

place 4

Land clearing for oil palm plantation, Sabah, Malaysia

© Mongabay.com



Question 29

29. Using the video, in which month in 2004 was the most land burnt in northern Australia?

September 1

October 2

November 3

December 4

[Video loaded separately - see North_Aust_HotSpots_edited.mp4](#)

A comparison of two extreme fire condition years in Northern Australia

© Charles Darwin University; North Australia and Rangelands Fire Information

Question 30

30. Australia's First Nations peoples have used fire as a management tool for their country for thousands of years.

Which word best describes their approach to land management?

destructive 1

vigilant 2

careful 3

custodial 4

Question 31

31. Which pressure most affects endangered species in Australia?

- habitat loss 1
- overexploitation 2
- pollution 3
- introduced species 4

Question 32

32. Look at the lower panel of the diagram.

Are the illustrated management strategies hard or soft engineering?

Choose the answers from the drop-down menus.

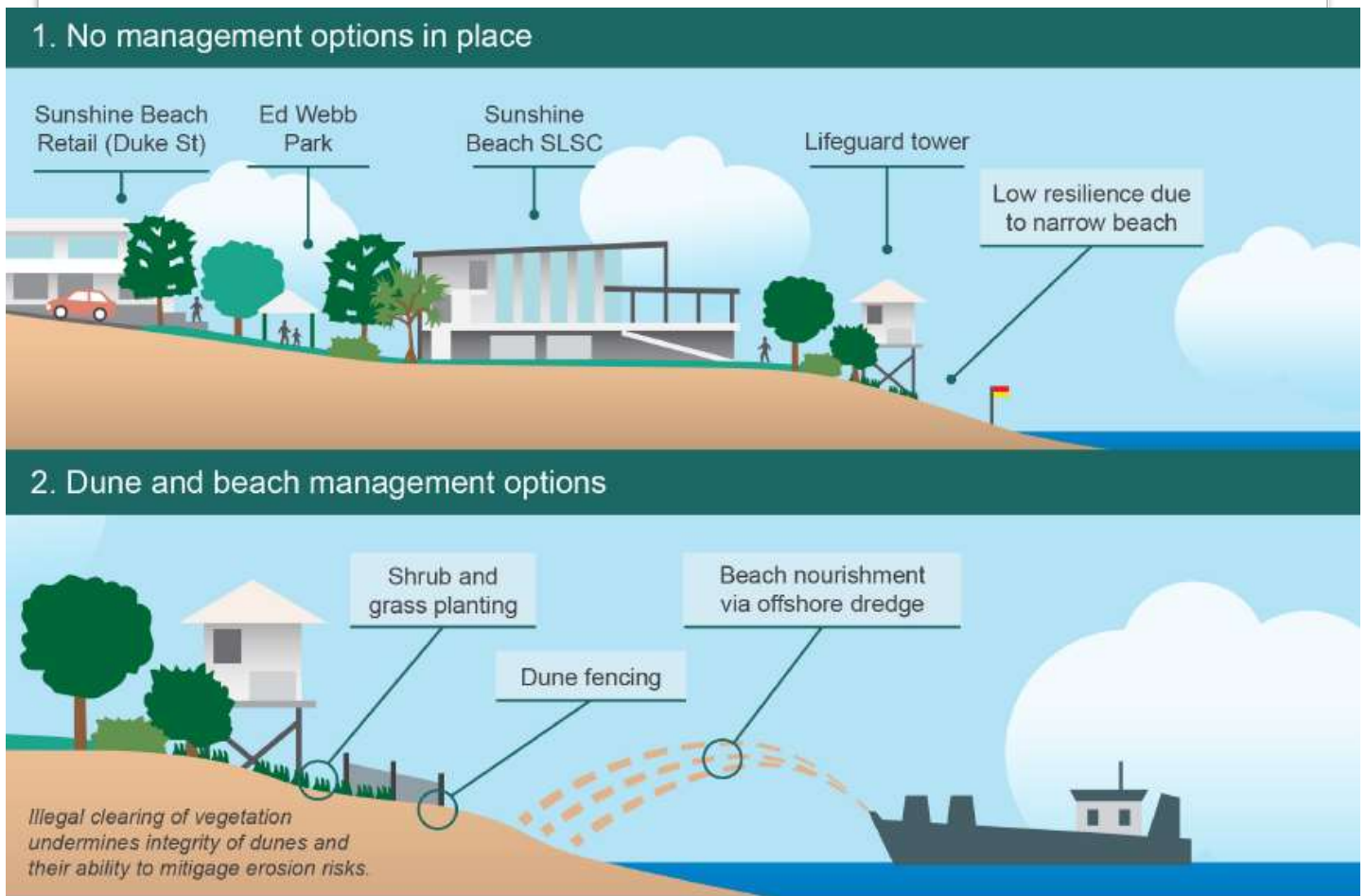
Shrub and grass planting is **soft** engineering.

Dune fencing is **hard** engineering.

Beach nourishment is **soft** engineering.

Dune and beach management measures, Sunshine Beach, Qld

© Noosa Council



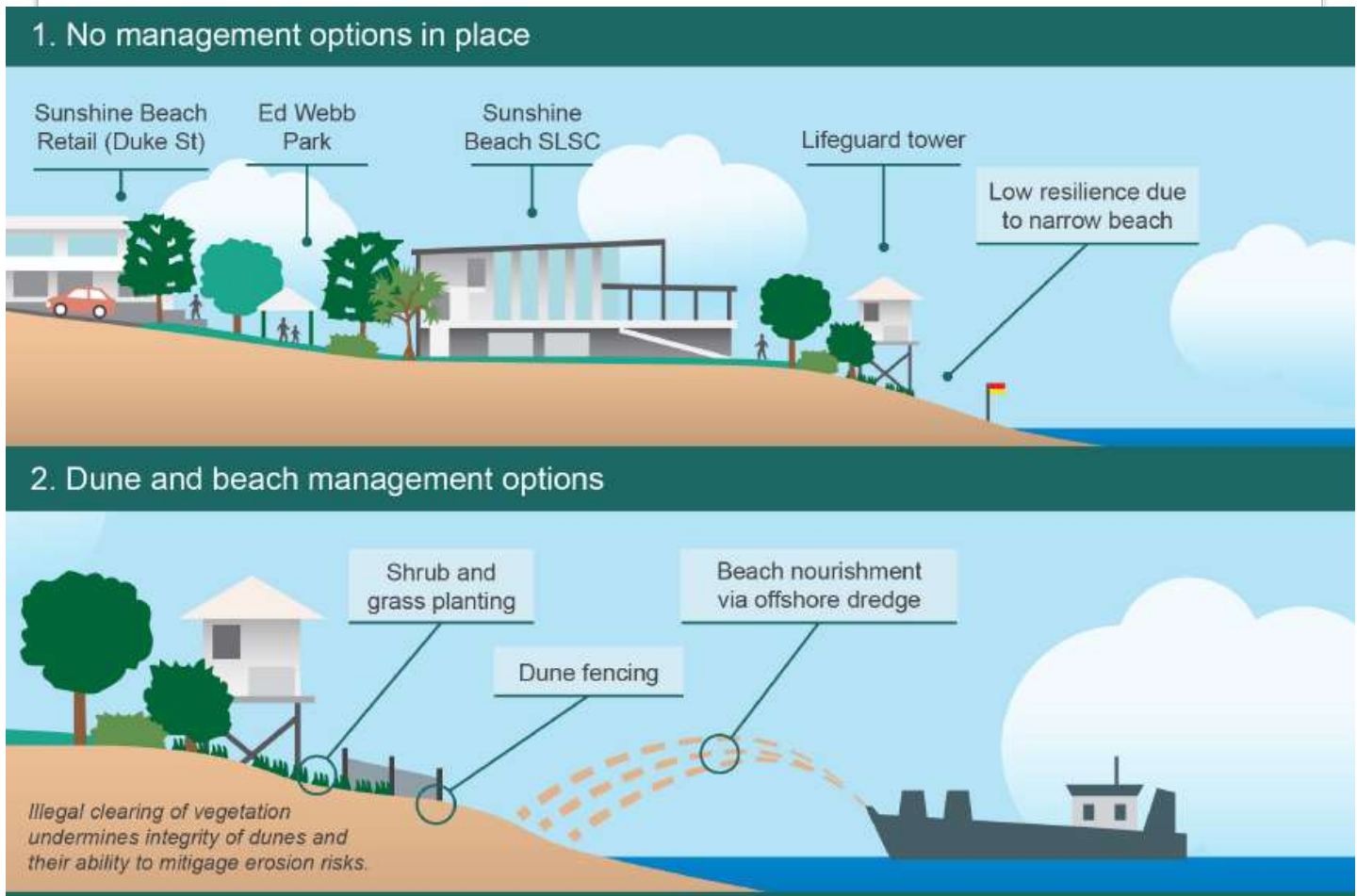
Question 33

33. Implementing all the strategies shown in the lower panel of the diagram would result in:

- restoration of dune succession 1
- improved resilience to erosion 2
- improved access to the SLSC 3
- erosion at the base of lifeguard tower 4

Dune and beach management measures, Sunshine Beach, Qld

© Noosa Council



Question 34

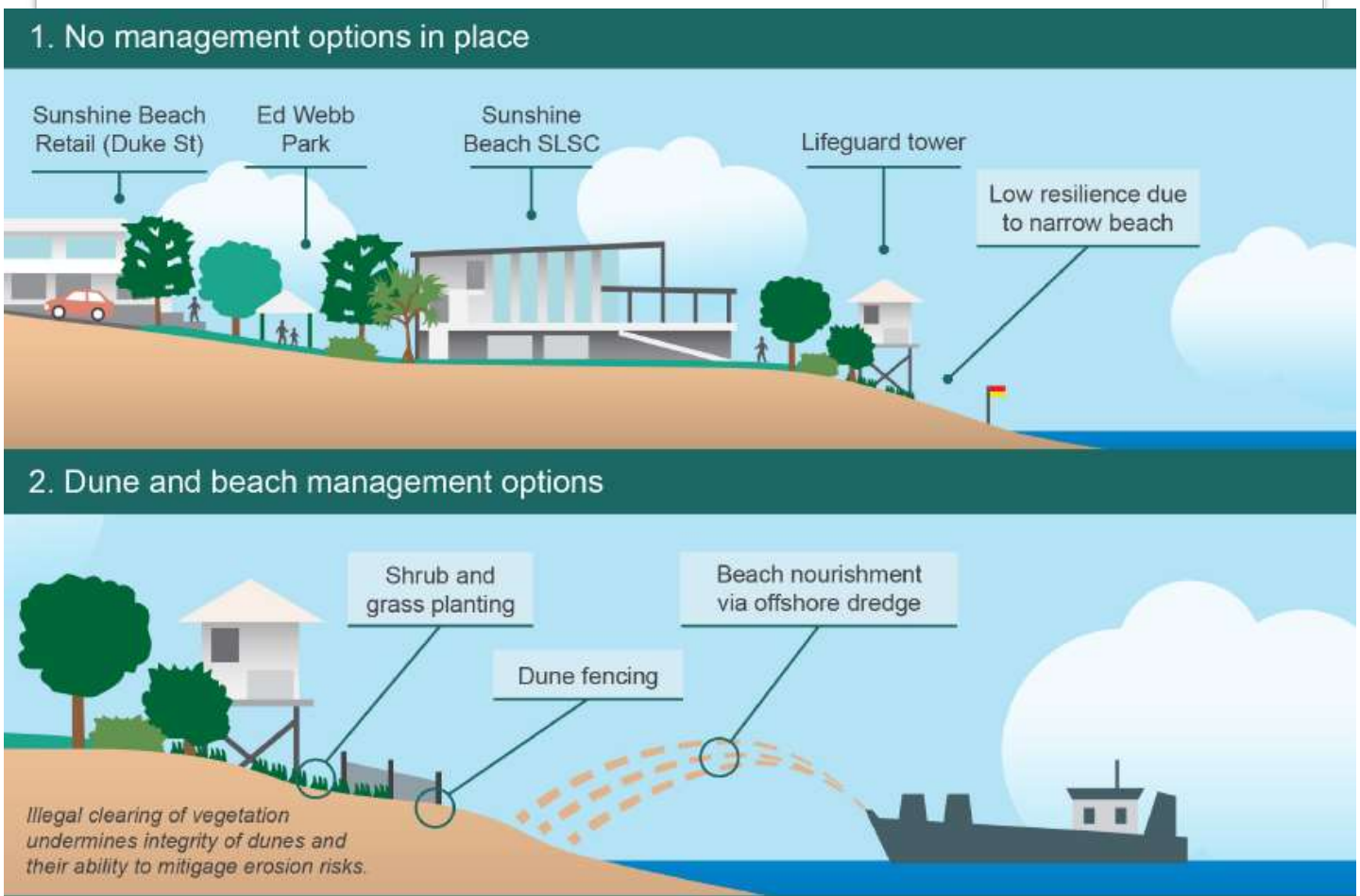
34. In the table, classify the impacts of Sunshine Beach’s management to indicate if they are mainly environmental, social or economic.

Choose the answers from the drop-down menus.

Classification	Impact of beach management
Economic	Tourism operators will benefit as more tourists are attracted.
Environmental	Vegetated dunes provide habitats for native species.
Social	Local residents can make more use of the beach for recreation.
Environmental	Offshore dredging will stir up sediment affecting marine life.
Economic	Damage to infrastructure from sea encroachment will be less likely.

Dune and beach management measures, Sunshine Beach, Qld

© Noosa Council



Question 35

35. Using the map, approximately how many internet users did Australia have in 2017?

between 1 million and 10 million 1

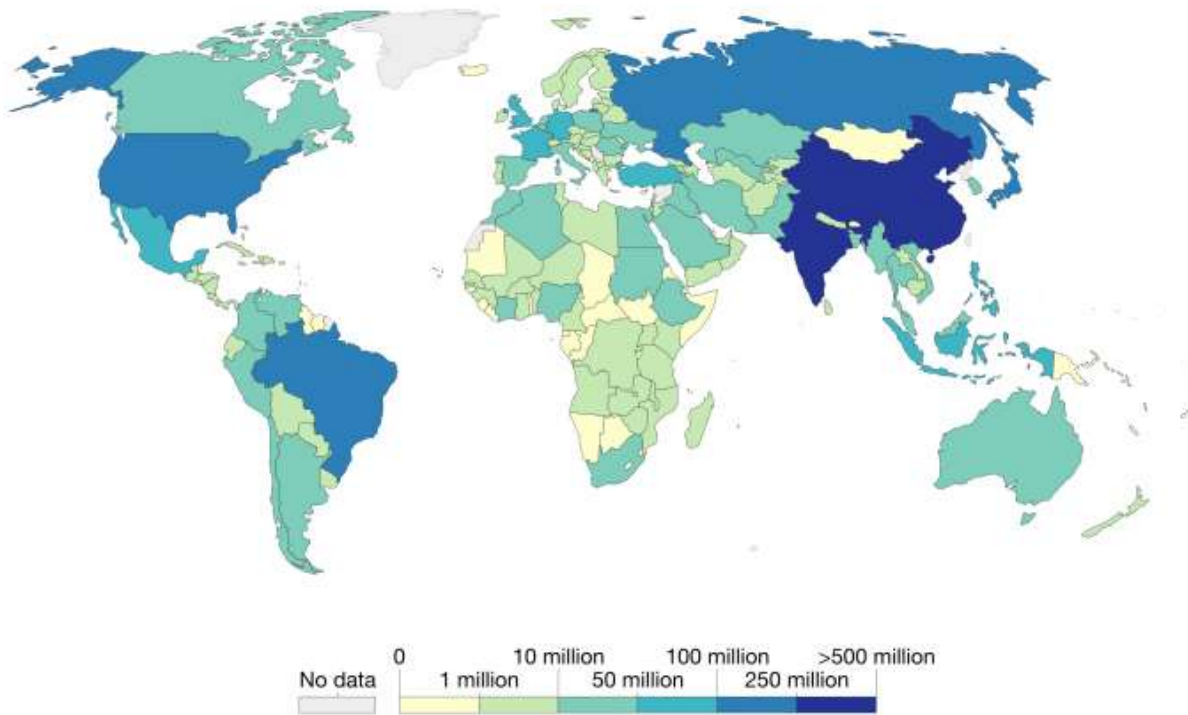
between 10 million and 50 million 2

between 50 million and 100 million 3

between 100 million and 250 million 4

Number of internet users by country, 2017

© Our World in Data, CC BY-SA



Question 36

36. Which factor explains why USA, Russia, China and India all have high numbers of internet users?

population size 1

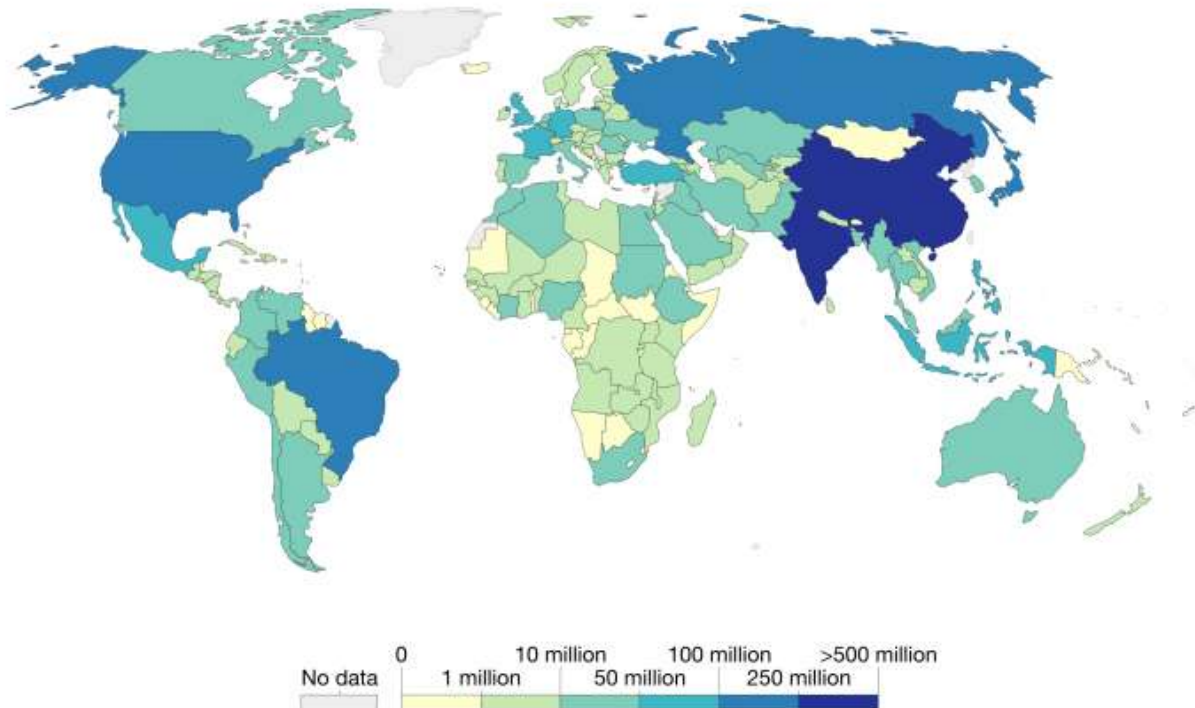
population density 2

high-speed connections 3

level of development 4

Number of internet users by country, 2017

© Our World in Data, CC BY-SA



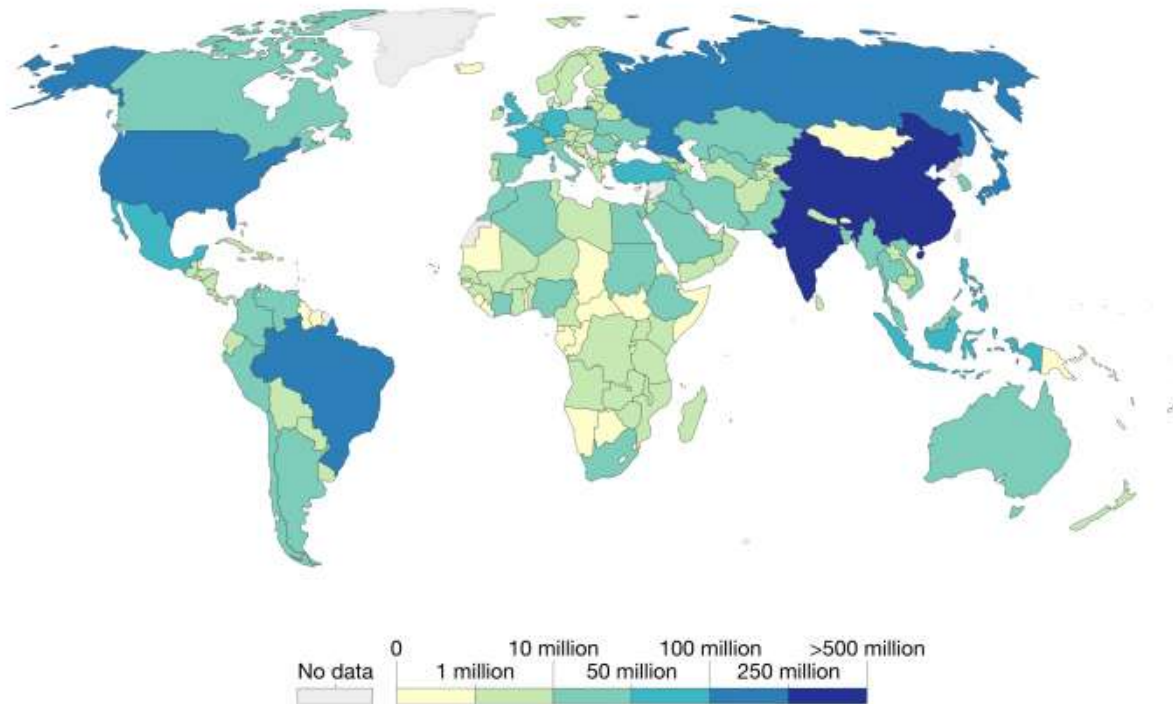
Question 37

37. Which type of map is this?

- topographic 1
- political 2
- choropleth 3
- cadastral 4

Number of internet users by country, 2017

© Our World in Data, CC BY-SA



Question 38

38. Using the table, for which social media platform do income and college education make the most difference in usage?

- LinkedIn 1
- YouTube 2
- TikTok 3
- Instagram 4

Percentage of U.S. adults who say they ever use selected social media, 2021

© Pew Research Center

	YouTube	Facebook	Instagram	LinkedIn	Snapchat	Twitter	WhatsApp	TikTok
Total	81	69	40	28	25	23	23	21
Men	82	61	36	31	22	25	26	17
Women	80	77	44	26	28	22	21	24
White	79	67	35	29	23	22	16	18
Black	84	74	49	27	26	29	23	30
Hispanic	85	72	52	19	31	23	46	31
Ages 18-29	95	70	71	30	65	42	24	48
30-49	91	77	48	36	24	27	30	22
50-64	83	73	29	33	12	18	23	14
65+	49	50	13	11	2	7	10	4
<\$30K	75	70	35	12	25	12	23	22
\$30K-\$49,999	83	76	45	21	27	29	20	29
\$50K-\$74,999	79	61	39	21	29	22	19	20
\$75K+	90	70	47	50	28	34	29	20
HS or less	70	64	30	10	21	14	20	21
Some college	86	71	44	28	32	26	16	24
College+	89	73	49	51	23	33	33	19
Urban	84	70	45	30	28	27	28	24
Suburban	81	70	41	33	25	23	23	20
Rural	74	67	25	15	18	18	9	16



Question 39

39. Using the table, across the range of social media, which demographic characteristic makes the greatest difference in usage?

- gender 1
- age 2
- income 3
- education 4

Percentage of U.S. adults who say they ever use selected social media, 2021

© Pew Research Center

	YouTube	Facebook	Instagram	LinkedIn	Snapchat	Twitter	WhatsApp	TikTok
Total	81	69	40	28	25	23	23	21
Men	82	61	36	31	22	25	26	17
Women	80	77	44	26	28	22	21	24
White	79	67	35	29	23	22	16	18
Black	84	74	49	27	26	29	23	30
Hispanic	85	72	52	19	31	23	46	31
Ages 18-29	95	70	71	30	65	42	24	48
30-49	91	77	48	36	24	27	30	22
50-64	83	73	29	33	12	18	23	14
65+	49	50	13	11	2	7	10	4
<\$30K	75	70	35	12	25	12	23	22
\$30K-\$49,999	83	76	45	21	27	29	20	29
\$50K-\$74,999	79	61	39	21	29	22	19	20
\$75K+	90	70	47	50	28	34	29	20
HS or less	70	64	30	10	21	14	20	21
Some college	86	71	44	28	32	26	16	24
College+	89	73	49	51	23	33	33	19
Urban	84	70	45	30	28	27	28	24
Suburban	81	70	41	33	25	23	23	20
Rural	74	67	25	15	18	18	9	16



Question 40

40. The pattern of fibre optic cables shown in the map largely reflects:

- population distribution 1
- trade patterns 2
- income levels 3
- different social norms 4

Pacific information superhighway map

© International Telecommunications

